

COPE-support - a multi-component digital intervention for family carers for people affected by psychosis: study protocol for a randomized controlled trial

Article

Published Version

Creative Commons: Attribution 4.0 (CC-BY)

Open Access

Sin, J., Henderson, C., Cornelius, V., Chen, T., Elkes, J., Woodham, L. A., Hernández, A. S., Spence-Polin, D., Batchelor, R. and Gillard, S. (2020) COPE-support - a multi-component digital intervention for family carers for people affected by psychosis: study protocol for a randomized controlled trial. *BMC Psychiatry*, 20 (1). 129. ISSN 1471-244X doi: 10.1186/s12888-020-02528-w Available at <https://reading-pure-test.eprints-hosting.org/89830/>

It is advisable to refer to the publisher's version if you intend to cite from the work. See [Guidance on citing](#).

To link to this article DOI: <http://dx.doi.org/10.1186/s12888-020-02528-w>

Publisher: Biomed Central

All outputs in CentAUR are protected by Intellectual Property Rights law, including copyright law. Copyright and IPR is retained by the creators or other copyright holders. Terms and conditions for use of this material are defined in

the [End User Agreement](#).

www.reading.ac.uk/centaur

CentAUR

Central Archive at the University of Reading

Reading's research outputs online

STUDY PROTOCOL

Open Access



COPE-support - a multi-component digital intervention for family carers for people affected by psychosis: study protocol for a randomized controlled trial

Jacqueline Sin^{1,2*}, Claire Henderson³, Victoria Cornelius⁴, Tao Chen⁵, Jack Elkes⁴, Luke A. Woodham⁶, Aurora Sesé Hernández⁶, Dominique Spence-Polin⁶, Rachel Batchelor¹ and Steve Gillard¹

Abstract

Background: Psychosis often causes significant distress and impacts not only in the individuals, but also those close to them. Many relatives and friends ('carers') provide long-term support and need resources to assist them. We have co-produced a digital mental health intervention called COPE-support (Carers fOr People with Psychosis e-support) to provide carers with flexible access to high quality psychoeducation and interactive support from experts and peers. This study evaluates the effectiveness of COPE-support to promote mental wellbeing and caregiving experiences in carers.

Methods: This study is a single-blind, parallel arm, individually randomized controlled trial (RCT) comparing COPE-support, with attention control. Both groups continue to receive usual care. COPE-support provides interactive web-based psychoeducation on psychosis-related issues, wellbeing-promotion and network support through forums. The attention-control is a non-interactive online information resource pack. Carers living in England are eligible if they provide at least weekly support to a family member or close friend affected by psychosis, and use internet communication (including emails) daily. All trial procedures are run online, including collection of outcome measurements which participants will directly input into our secure platform. Following baseline assessment, a web-based randomization system will be used to allocate 360 carers to either arm. Participants have unlimited access to the allocated condition for 40 weeks. Data collection is at three time points (10, 20, and 40 weeks after randomization). Analyses will be conducted by trial statisticians blinded to allocation. The primary outcome is mental wellbeing measured by Warwick Edinburgh Mental Wellbeing Scale (WEMWBS), at 20 weeks. As well as an intention-to-treat analysis, a complier average causal effect (CACE) analysis will be conducted to estimate the intervention effect in participants who have accessed COPE-support content twice or more. The secondary objectives and analysis will examine other health and caregiving-related outcomes and explore mechanisms. In a process evaluation, we will interview 20% of the intervention arm participants regarding the acceptability of COPE-support. We will explore in detail participants' usage patterns.

(Continued on next page)

* Correspondence: jasin@sgul.ac.uk

¹Population Health Research Institute, St George's, University of London, Cranmer Terrace, London SW17 0RE, England, UK

²School of Psychology & Clinical Language Sciences, University of Reading, Earley Gate, Reading RG6 6AL, England, UK

Full list of author information is available at the end of the article



© The Author(s). 2020 **Open Access** This article is licensed under a Creative Commons Attribution 4.0 International License, which permits use, sharing, adaptation, distribution and reproduction in any medium or format, as long as you give appropriate credit to the original author(s) and the source, provide a link to the Creative Commons licence, and indicate if changes were made. The images or other third party material in this article are included in the article's Creative Commons licence, unless indicated otherwise in a credit line to the material. If material is not included in the article's Creative Commons licence and your intended use is not permitted by statutory regulation or exceeds the permitted use, you will need to obtain permission directly from the copyright holder. To view a copy of this licence, visit <http://creativecommons.org/licenses/by/4.0/>. The Creative Commons Public Domain Dedication waiver (<http://creativecommons.org/publicdomain/zero/1.0/>) applies to the data made available in this article, unless otherwise stated in a credit line to the data.

(Continued from previous page)

Discussion: The results of this trial will provide valuable information about the effectiveness of COPe-support in promoting wellbeing and caregiving experiences in carers.

Trial registration: The RCT is registered with the Current Controlled Trials registration ([ISRCTN 89563420](https://www.clinicaltrials.gov/ct2/show/study?term=ISRCTN%2089563420&rank=1), registration date: 02/03/2018).

Keywords: eHealth, eMentalHealth, Digital interventions, Carers, Psychosis, RCT, Wellbeing

Background

World-wide, an ever-increasing population is living longer in the community despite long-term illness. In addition to the advances of health care, one crucial element that support and sustain this population in their own home is the unpaid care and support provided by relatives and friends [1]. In the UK, it is estimated that approximately 1.5 million people are caring for a family member or friend with a mental illness [2–4]. Of these illnesses, psychosis is recognised as among the most common and severe [2, 3]. Often, people with psychosis require long-term treatment and support across a range of life domains, including emotional support, financial and practical assistance for daily living activities [5, 6]. Therefore, the importance of relatives and friends - referred to carers hereafter - is well established. Extant research evidence has established that individuals who receive support and care from their familial networks have a better prognosis and enhanced quality of life [3, 7, 8]. Conversely, the responsibility of caring often means that carers of people with psychosis experience high levels of distress and increased vulnerability to ill health [9–12]. Furthermore, carers' psychiatric morbidities are shown to be inversely correlated with the amount of care they provide; that is, the higher amount of care provided leading to poorer mental health [13]. Poor mental health in carers can further negatively impact their caregiving capacity [9, 14]. Carers who are unwell themselves or feel they lack resources to cope are less likely to engage in caring for their loved ones in a positive manner [6].

Consequently, a body of research has been undertaken to establish psychosocial interventions which can best support carers [5, 6, 15]. Among these, psychoeducation (i.e. information-giving on the illness condition and related caregiving and problem-solving strategies) especially those integrated with a peer support element between carers in a group setting, has the strongest evidence base for its effectiveness in enhancing carers' knowledge and coping with their caring roles [2, 16]. Carers also identify that sharing mutual support and learning with other carers as particularly useful in reducing their sense of isolation [5, 16]. In the UK, psychoeducation is recommended by the National Institute for Health and Care Excellence (NICE) guidelines on psychosis and schizophrenia for all carers [2].

With digital health interventions becoming more widespread and popular across a range of public mental health topics in the recent time, interventions targeting carers supporting a loved one with long-term illness have increasingly adopted an online medium [15, 17]. Many carers lead a busy lifestyle with multiple commitments in addition to caregiving. Digital interventions are potentially flexible, accessible and yet adaptable to individualized needs and schedule. Such interventions, using an enriched and dynamic online environment, are particularly suited to delivering psychoeducation, wellbeing promotion strategies, and network support with health-care professionals and peers [18–20].

Emerging research provides increasing evidence to promote digital mental health (or e-mental health) as an effective means to disseminate interventions to carers [15]. Across a wide range of long term illnesses, there is a particularly strong evidence base for psychoeducational interventions treating mental health morbidities in carers of people with dementia, stroke, and cardiovascular diseases. In contrast, both the volume of literature and research evidence are less established in mental health arena, with the exception of eating disorders [15, 19, 21]. Few such interventions are available for psychosis carers and even fewer have been trialled rigorously [17]. Hence, the EFFIP (E-support for Families and Friends of Individuals affected by Psychosis) Project was established to fill these research gaps to develop and evaluate a digital health intervention for carers supporting a relative or close friend with psychosis [22]. The EFFIP project is a five-year research programme encompassing theoretical development work and participatory research to develop the digital health intervention which is then evaluated for effectiveness in promoting carers' wellbeing [5, 6, 17]. The participatory study through which the intervention, called "COPe-support (Carers fOr People with Psychosis e-support)" was co-produced, is published elsewhere [22]. COPe-support provides high quality psychoeducation and interactive support to carers entirely through the internet, promoting flexible access and individualized choice of content, pace, and engagement for its users [22]. It is expected that, if effective, COPe-support can help overcome some of the barriers associated with implementing evidence-based psychosocial interventions. These include lack of resources to prioritise carers' needs on a par with

those they care for, stigma, accessibility, and the mismatch between the conventional face-to-face service provision and the diverse needs of carers [6, 17, 22].

There is a strong argument that interventions delivered online should also be evaluated online to maximize the trial's external validity and some aspects of internal validity [23]. Firstly, it is of interest to establish whether the profile of carers using a digital intervention is representative of the wider populations, including those using conventional services (such as face-to-face carers groups, individual psychological intervention). Secondly, as COPE-support is delivered entirely online and requires the carers to self-pace and self-tailor the multiple components suiting their own needs and schedule, it is only logical to collect evaluation data directly from them using an online medium. Thirdly, while arguably the web-based media offers a low-cost platform through which the intervention can be delivered to a critical mass with a high level of fidelity to its design, research on online trials show that they can be inferior to conventional trials in terms of adherence and retention rates [17, 23–25]. It is important for both the trial and the facilitation of COPE-support to consider effective strategies to engage with carers in line with its online delivery. Finally, as digital interventions allow their users a self-directed approach in using the content, intervention usage or adherence is often very heterogenous. It is important to explore the differential benefits of the intervention use in participants with different usage patterns [26–28].

The proposed COPE-support trial aims to evaluate the clinical effectiveness of COPE-support in promoting mental wellbeing and caregiving experiences in relatives and close friends who support a loved one affected by psychosis.

Study aims and objectives

This trial aims to determine the effectiveness of the COPE-support intervention and usual care (UC), compared with a non-interactive web-based information resource (which is also provided within COPE-support) and usual care. The comparator is an attention-matched control while also representing the current online resources widely available to carers.

Further objectives include:

- To determine the effects of COPE-support on carers' mental wellbeing;
- To determine the effects of COPE-support on carers' mental health knowledge, perceived support, appraisal of caregiving experiences, expressed emotion, and quality of life;
- To explore the intervention effects of COPE-support on hypothesized mechanisms of change through

impacts on carers' knowledge, perceived support, and appraisal of caregiving;

- To assess the relationship between usage of COPE-support and effectiveness in carers' outcomes; and
- To determine the acceptability of COPE-support as perceived by carers.

Study hypotheses

The primary hypothesis is that COPE-support is superior to the attention-matched control with respect to improving carers' mental wellbeing, measured using Warwick Edinburgh Mental Wellbeing Scale (WEMWBS [29]) at the end of intervention use of 20 weeks (primary end point). Secondly, it is hypothesized that relative to the control group, COPE-support participants will have better mental health knowledge, appraisal of their caregiving experiences, perceived support, and quality of life, at all follow-up time points.

Methods

Trial design

The study is an online randomized controlled trial (RCT) with an embedded internal pilot RCT to verify recruitment and retention; and a full RCT. The overall RCT uses a two-arm, individually randomized controlled superiority trial design comparing COPE-support (in addition to usual care) with an attention-matched control (in addition to usual care).

Internal pilot

The trial includes a 12-month internal pilot to establish that study procedures work well to recruit and retain participants, and check that a good proportion of participants use the intervention. The definition of use is a participant who has activated their log-in and have accessed their allocated condition at least once. The internal pilot progression criteria include:

- **Go:** at least 80% of one-third of the sample size (i.e. 120) are recruited, and at least 80% of these participants have met the usage requirement and are retained in the study by 20 weeks (primary end point)
- **Amend and review:** If any of the recruitment, usage and retention rates are below 80%

We were required to achieve the above criteria by the end of the initial 12 months for the trial to proceed into the full study. In the event of any of the recruitment, retention, or usage thresholds not being met, we would have worked together with the Trial Steering Committee to review strategies for improvement. The internal pilot study was successful with all the "Go" criteria met prior to the deadline, and hence it proceeded into the next

stage with further recruitment sites set up and recruitment strategies scaled up for a further year.

Setting and participants

The study will recruit adult carers who provide ongoing care and support for a relative or close friend affected by psychosis (including Type 1 bipolar disorder in addition to all diagnoses covered by the NICE guideline on psychosis and schizophrenia [2]) on an unpaid basis. Both the carers and the cared-for individuals need to reside in England, UK.

Eligibility criteria

Inclusion criteria include family members, relatives or close friends who:

- Are aged 18 or over;
- Have at least weekly contacts with the cared-for person, in any form ranging from face-to-face to social media communications;
- Living in England during the study period;
- Able to communicate in English in usual online communications; and
- Have daily access to the internet including emails.

To avoid a clustering effect, we can only include one carer per cared-for individual in the trial. Therefore, we exclude potential participants who have another relative or friend, already enrolled in the study, sharing the caring role for the same person.

Interventions

Active intervention: COPe-support

The intervention condition, COPe-support, is delivered through a web-based virtual learning environment (VLE) called Canvas (<https://www.canvasvle.co.uk>). The VLE allows the participants to access the intervention online via desktop or laptop web browsers, as well as smartphones or tablets through a Canvas app. COPe-support was co-produced through participatory research with a wide range of experts through experience or through professional training, building upon results identified through systematic reviews of the literature and a focus group study with carers and people affected by psychosis [6, 17, 22]. After the COPe-support prototype was finalized, we ran a mixed-method study to establish its feasibility and usability with a small sample of carers and technical expert. We also gleaned further usage and qualitative feedback from the usability study to refine the content and facilitation strategy of COPe-support [30]. These have been incorporated to develop and revise the delivery and facilitation strategies of the RCT, as reported in this protocol.

Delivered through an online enriched environment platform, COPe-support is a multi-component digital intervention providing psychoeducation and network support function with peers and experts. After logging in, carers will automatically enter into the Home page showing a brief introduction and a grid-based visualization representing the intervention menu [22, 30]. From here, carers can access and download a navigation video or equivalent textual guide. Using a mixture of textual and audio-visual materials devised by the study team with contributions from expert members, COPe-support content is grouped into 12 broad sections [22, 30]. These include:

- six sections of psychoeducation focusing on psychosis, its treatment, and related caring issues;
- two sections on wellbeing promotion information and exercises directed at carers themselves;
- two online forums, one called “Ask the Experts” where carers can post questions for advice from a panel of experts, and the other called “Peer to Peer” where carers exchange views with one another;
- a “Resources for carers” section with supplementary weblinks to a wide range of relevant external resources; and
- a “Support” section where participants can get in contact for technical or emotional support directly.

The content of COPe-support is summarized in Table 1. Figure 1 provides screenshots of various sections of COPe-support.

Throughout the study period, an online facilitator (JS) who is an experienced mental health nurse, monitors and moderates all the interactive functions of COPe-support. These include the forums and the inbuilt communication weblinks such as messages the participants can send through COPe-support platform asking for support or seeking information. The online facilitator also coordinates a panel of 14 expert panel members comprising psychiatrists, GPs, pharmacists, benefits advisors, CBT therapists, social worker, mental health nurse, and Expert through Experience, behind the operation of the “Ask the Experts” forum. Once a week, the facilitator also posts an update via the COPe-support announcement function to all participants with an aim to keep them engaged. In parallel to the announcement appearing on COPe-support platform, an email will automatically be generated to each of the participants. For security and confidentiality considerations, participants are required to follow a set of ground rules in using COPe-support [22]. These include the use of a self-chosen pseudonym to anonymise participation in communication and interactions online and adhering to the confidentiality principles so not to include any of their own and their cared-for individual’s person-

Table 1 Summary of COPE-support content

Section title	Content
Understanding psychosis	An overview of psychosis including common symptoms and co-occurring problems, a bio-psychosocial explanatory model of possible causes, and prognosis.
Treatment of psychosis	Information on evidenced-based pharmacological, psychological, social, and alternative treatment for psychosis, with reference to the NICE guidelines.
Caring for your loved one	Information on caregiving, communication, and problem-solving strategies for a range of common symptoms and related issues, such as: supporting your loved one with paranoid beliefs; and working out a relapse prevention plan.
Getting through services	Information on the health, social and wider service systems and ways to navigating through them for support for their loved ones and the carers themselves.
Ways to promote recovery	It describes how carers can help support their loved ones to live their life to the full and gives information on a variety of support resources through the healthcare and wider social network.
Caring for carers	Focusing on carers themselves, we share tips from other carers with experiential expertise and the literature in ways to look after their own wellbeing, including interactive resources (such as podcasts) promoting wellbeing.
Stigma and discrimination	Information on stigma and discrimination commonly faced by individuals with psychosis and those close to them. We give information on related law and rights and suggest ways and resources which help deal with stigma and discrimination.
Becoming a resilient carer	This section helps carers to reflect and draw together relevant information and skills gained for their caring situation and for looking after their own wellbeing. It concludes with an interactive plan where carers can tailor-make their own "caring for carer" plan integrated with a wellbeing-promotion toolkit.

Table 1 Summary of COPE-support content (*Continued*)

Section title	Content
Peer to peer forum	A virtual forum and blog space for carers to share experiences and discuss commonly encountered issues. It has seven topics covering carer's story and various topics such as difficult emotions and way to come to terms with them, and "taking the positive things out of the experience".
Ask the experts forum	An interactive forum where carers can post questions to an expert panel. The forum is organized around six topics, including talking therapies and psychosocial interventions, and general and physical health issues. All other carers can also post responses and follow-up questions onto the forum.
Resources for carers (<i>The control comprises this section</i>)	A live information bank that covers a range of relevant services and resources with direct weblinks. Categories of resources include: voluntary organisations; relevant organization providing mental health information and support; statutory health and social care services; books; online resources; health research information; and money matters advice.
Support (<i>The control comprises this section</i>)	We provide a direct weblink in this section where carers can contact the study team for emotional or technical support. Information on alternative relevant support services, such as NHS 111 and Samaritan are provided here.

identifiable details when making posts on either forum. We provide guidelines with examples to explain what constitute person-identifiable data and how participants can fully participate in the interactive forums without giving any such data away. If necessary, the facilitator can delete or edit posts made by participants and moderate any particular participants' access to the forums [30].

Attention-matched control: web-based information bank

To control for the attentional component of COPE-support and to account for the effects of online information provided by websites run by statutory and voluntary organisations as part of usual care, we developed a

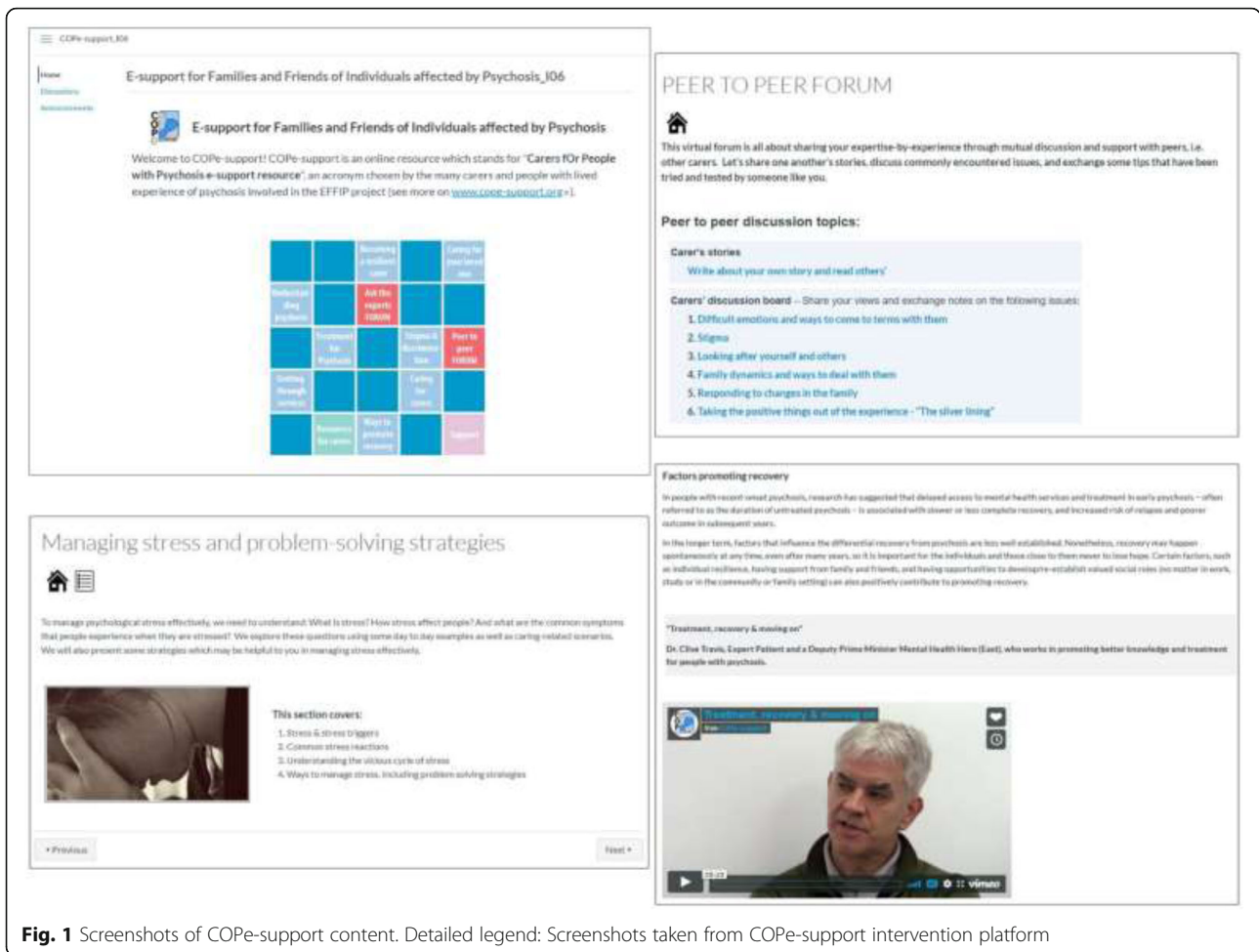


Fig. 1 Screenshots of Cope-support content. Detailed legend: Screenshots taken from Cope-support intervention platform

control intervention to have the identical look and “feel” as the active Cope-support intervention. We created the control condition mimicking the content of the Home page, “Resources for Carers”, and the Support section from the active intervention, also delivered through Canvas VLE (see Table 1). However, there are much less content and no interactive forums in the control nor any wellbeing promotion content. Participants can get in touch with the study team directly for support if necessary, and the control also has the same communication functionalities as the active intervention, hence participants will also be sent weekly updates. In order to encourage retention and follow-up data completion, we will offer the participants allocated to the control access to Cope-support for four months’ time, after final follow up data collection. Screenshots of the control are shown in Fig. 2.

Procedures
Recruitment

We will recruit the participants from statutory mental health services across England, i.e. NHS mental health trusts which provide secondary mental health services

locally, typically for a population between three-quarters of to one million. Furthermore, we will recruit through national and local voluntary mental health organisations (such as SANE <http://www.sane.org.uk/> and Suffolk Family Carers <https://suffolkfamilycarers.org/>).

Study promotion and recruitment activities across all sites will include the research team presenting at relevant events targeting carers and staff working with carers. We will also disseminate flyers, posters, and study information widely within various sites, through working closely with the Clinical Research Network and local staff who are supporting the study recruitment. Social media advertising using twitter targeted at statutory and voluntary organisations which carers commonly seek out will also be utilized.

Further to the recruitment activities, all interested carers are directed to our study website (www.cope-support.org/) which provides comprehensive study information including the full participant information sheet outlining the study aims, risks and benefits, confidentiality and dissemination of results. Potential participants can register their interest in joining the study and

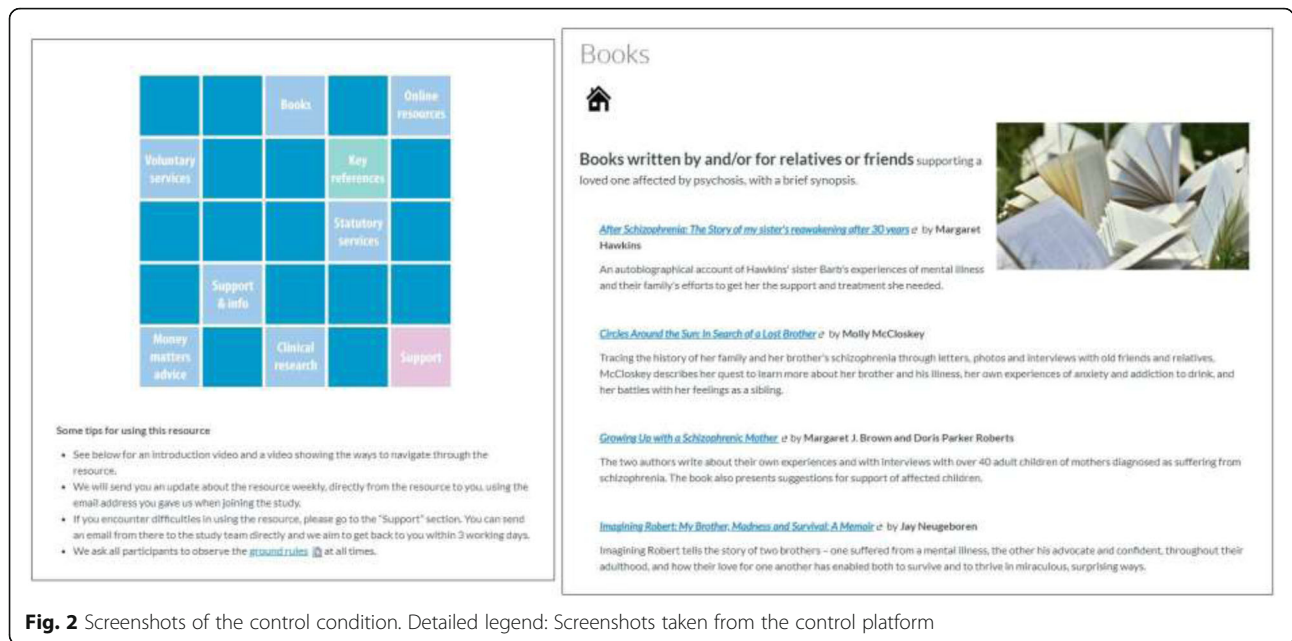


Fig. 2 Screenshots of the control condition. Detailed legend: Screenshots taken from the control platform

undertake eligibility screening through the study website. Those who meet all the eligibility criteria are then guided through the online informed consent seeking and study enrolment process. The study website also provides direct weblink for potential participants to post any queries and get in touch with the study team.

We schedule all the participants recruited over a duration of two years (i.e. March 2018 to February 2020) into six cohorts, each lasting eight months, as shown in Fig. 3. This approach allows us to group at least 20 but no more than 60 participants in the intervention platform at any one time. This is to ensure that forum elements of the intervention - those requiring interactions between participants - are accessed by an optimal number of participants [17]. Two weeks prior to each cohort is due to start, consented participants are invited to undertake a baseline measures through our secure online platform. Those who have completed the baseline measures will then be randomized to receive either COPe-support or the attention-matched control. They will be sent log-in details to access the respective

condition and instructions to download the free app (Apple or Android) for those who want to use COPe-support (or the control) on tablets or smart phones, in addition to computers. The flow of participants through the study phases is shown in Fig. 4.

Assessment

Primary outcome and measure

The primary outcome is carers’ mental wellbeing at 20 weeks assessed using Warwick Edinburgh Mental Well-being Scale (WEMWBS [29]). WEMWBS is a self-report measure comprising 14 short statements focusing on positive wellbeing. Each statement is rated on a 5-point Likert scale, resulting in the possible scores range from 14 to 70 (higher score indicates better mental wellbeing). Since its validation, WEMWBS has been widely used in epidemiological studies, including the Health Surveys in England and Scotland [11, 31, 32]. It has been established that an increase of 3 points in WEMWBS is a meaningful change post intervention, based on a wide

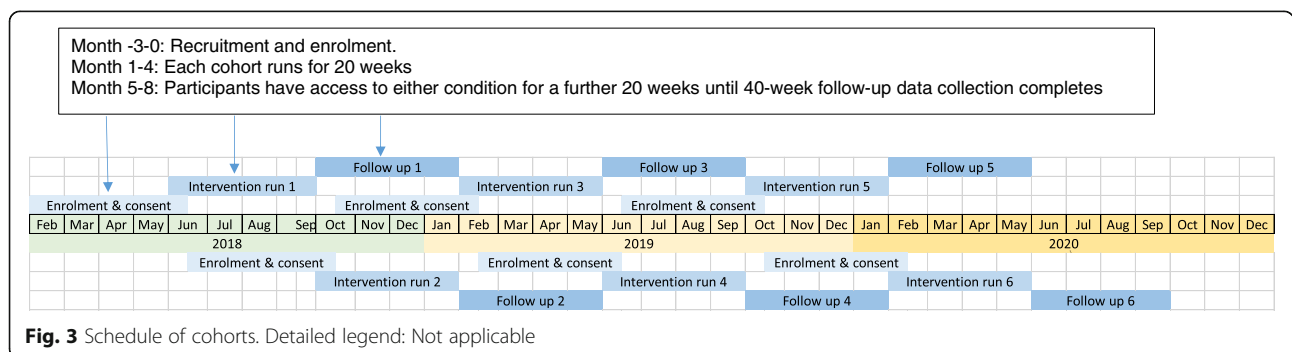
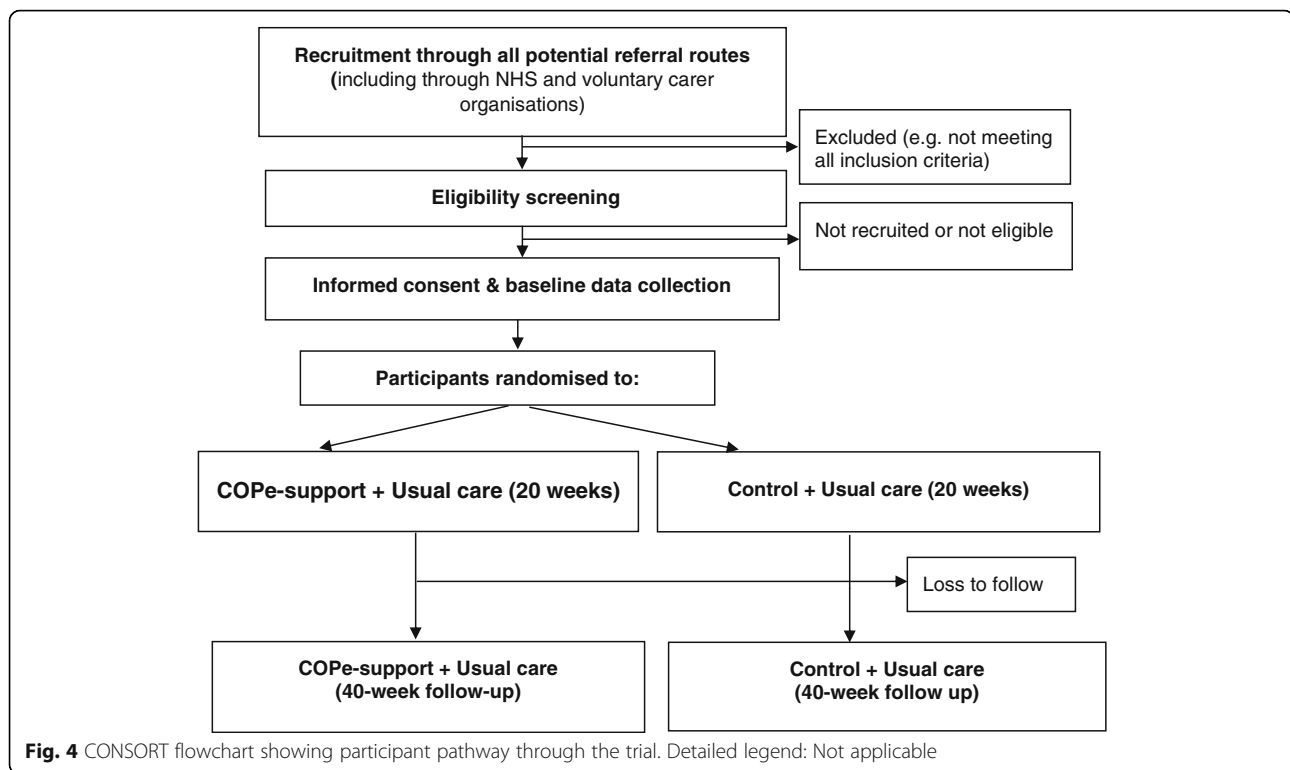


Fig. 3 Schedule of cohorts. Detailed legend: Not applicable



range of mental health intervention trials undertaken in different populations [13, 33].

Secondary outcomes and measures

A range of secondary outcomes will be considered, including changes in the following:

Carers' mental health knowledge, measured using the Mental Health Knowledge Schedule (MAKS [34]). MAKS has two sections: the former to investigate participants' knowledge of mental health; the latter for contextualising the responses. Possible scores range from 6 to 30 by summing up the scores of the first section of six items. Higher scores of MAKS indicate better level of mental health knowledge.

Carers' appraisal of caregiving experience, assessed using the Experience of Caregiving Inventory (ECI [8]). There are 66 brief statements each requiring a rating on a 5-point ordinal scale (from 0 = never to 4 = nearly always) in the ECI. These are categorized into ten subscales; eight negative subscales summing into the total negative appraisal total (possible scores range from 0 to 208; higher scores indicate poorer outcome), and two positive subscales totaling into the positive appraisal score (possible scores range from 0 to 56; higher the scores better the positive perspective).

Carers' wellbeing and perceived support, measured with the Carers' Wellbeing and Support Questionnaire (CWS [35]). CWS contains two subscales: wellbeing

(higher scores indicate better wellbeing) and perceived support (higher scores indicated lower satisfaction).

Criticism and emotional over-involvement in the family, assessed by Family Questionnaire (FQ [36]). FQ comprises 20 short questions, with 10 of these covering the criticism subscale, and the remainders the emotional over-involvement subscale. Higher scores indicate poorer outcomes on both subscales.

Carers' quality of life assessed using Euro-QoL 5-level (EQ-5D-5L [37]). EQ-5D-5L comprises two components: health state description covering the domains of mobility, self-care, usual activity, pain/discomfort and anxiety/depression; and an overall evaluation using a visual analogue score (EQ-VAS). The EQ-VAS asks the participants to rate their subjective rating of health ranging from 0 to 100, where 100 implies the best health one can imagine, and 0 the worst.

Service use

In addition to these measures, service use information by the participants will be collected to describe usual care.

Process evaluation outcomes and data

The trial has an inbuilt process evaluation study to explore participants' usage patterns and subjective experience of participants in using COPe-support. In order to understand when and how participants access and use the online intervention, we will collect usage data which

the intervention and control platform automatically monitors and records. These include:

- Number of log-ins on separate days per participant (both arms)
- Average page views per log-in per participant (both arms)
- Total time spent on the platform per participant (both arms)
- Average time spent per page view on the platform per participants (both arms)
- Total number of posts per participant made to the peer-to-peer forum (intervention arm only)
- Total number of posts per participant made to the Ask the Experts forum (intervention arm only)

Perceived acceptability will be determined through interviewing a purposive sample of 20% of the participants in the intervention arms of the trial after all the data collection procedures (i.e. about 36 out of the 180, or less should data saturation, that is no further data is being collected that adds to the content of existing themes, be reached in the iterative analysis process [38]). For the individual interview, purposive sampling will be used to identify participants to ensure representation of diverse experiences and views from those with ethnic minority backgrounds, different caregiving experiences and roles, and usage patterns. The interview is designed to be semi-structured and conducted over phone or Skype, suiting the participants' preference and convenience.

Data collection

Assessments will be completed online at baseline (i.e. no more than two weeks prior to randomization and allocation), half-way through the intervention use (10-week), post intervention (20-weeks), and 40-week follow-up. All outcome measures are self-completed questionnaires as described above. At each time point, we will invite the participants to undertake an online assessment through our secure platform. At study enrolment, we will also collect data on participant's demographic and caregiving-related information (e.g. the gender of the cared-for person, are they living together or separately, and how much time they spend on caring for their loved one in the previous week). At each assessment time point, participants will receive up to six email-reminders over a four-week window, linking them to an online platform through which they can complete the assessment.

We will collect the usage data during the intervention time (20 weeks) following completion of all outcome data collection, i.e. at the end of 40 weeks. These data will be collected from our intervention (and control) platform which automatically record individuals' usage.

On completion of each assessment, participants will be emailed an Amazon voucher to thank for their time and participation (i.e. £10 for the first, £5 for the second and third respectively, and £10 for the fourth and last). We will offer an additional £10 Amazon voucher for those who give an interview. Figure 5 shows all the measures used and data collection schedule.

Sample size

The trial sample size is calculated with reference to an earlier study testing a digital health intervention targeting siblings of individuals with first episode psychosis [39] and the primary outcome measure data (i.e. WEMWBS [29]). This study is powered to detect the minimum clinically important difference of + 3 in WEMWBS which is considered a meaningful change post intervention between treatment groups [31]. Using 80% power, significance level of 5% and an estimated SD of 9 from the E Sibling Project RCT baseline results [13, 39], 143 carers per arm are needed. With estimated 20% attrition, additional participants ($n = 74$), will be recruited, leading to an overall sample size of 360 across both arms.

Random allocation

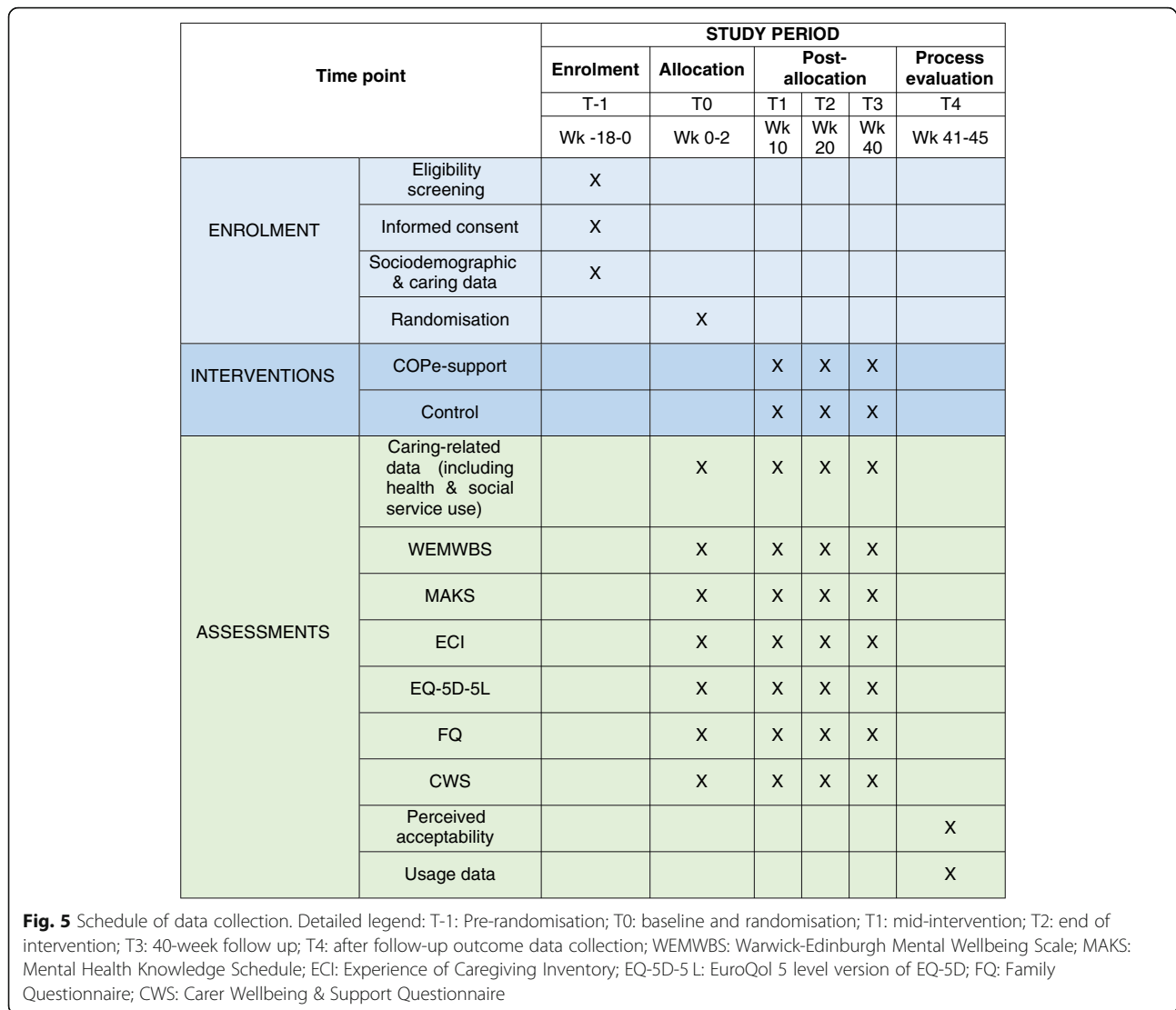
Participants who have completed baseline measures before the respective cohort starts will be randomized using a 1:1 ratio to "COPE-support and usual care" versus "Control and usual care" by an online randomization programme developed and hosted by King's Clinical Trials Unit. The algorithm for randomization will consist of permuted blocks stratified by the gender. While there is no established evidence of any carer sociodemographic or caregiving-related factors having an effect on carers' health outcomes, females (having a caregiving role or not) are known to have worse outcomes in population mental wellbeing research [11, 12, 40] and that participants in most prior research recruiting carers were predominantly females.

Allocation concealment and blinding

We are unable to blind participants to their allocation as they will realise that the control condition has much less content, but both arms will have access to an online resource bank and usual care. Nonetheless, all outcome data collected use self-reported measures and direct online input by participants. The study coordinator and intervention (and control) online platform facilitator (JS) cannot be blinded to the allocation because she needs to adjust her facilitation according to the different content of the two groups.

Data storage and security

All trial data as described above are collected through an online system linked and integrated with the intervention



platform. Only the Chief Investigation (JS) and core study team members who have a role in either study facilitation or data management will have direct access to such platform and data. All data sets will be password protected. To ensure confidentiality, data dispersed to trial statisticians and wider project team members will be anonymized of any identifying participant information.

Monitoring

Trial steering committee

The trial is overseen by an independent Trial Steering Committee (TSC) comprising clinical-academic experts, an independent trials statistician, and carers with experiential expertise on the subject. The TSC provides governance and guidance on the study delivery and progress. It provides a monitoring and advice function for the safety and wellbeing of the study participants. In view of the safety event data, the TSC will consider the need for appointing a separate

Data Monitoring Committee (DMC) if necessary. In addition, the TSC reviewed and approved the safety protocol, usage data definitions and statistical analysis plan.

Safety protocol

For this trial we have adapted the definition of adverse events commonly used in conventional clinical trials.

In addition to adverse and serious adverse events, we have devised a category labelled as “unintended consequences”. These are summarized as follows:

- Unintended consequences (UCo) – incidents during which participants’ use of the intervention (or control) is interrupted and the potential distress caused is below the threshold of that described in adverse event category. Examples include participants forgetting their log-in password, platform technical issues interrupting

delivering, or participants realizing their own unmet needs in light of the intervention content.

- Adverse events (AE) - clear evidence of distress or concerns of risk of harm towards participants or others, resulting in needs for medical and/or mental health support. However, there is no immediate or serious threat of severe harm or risk of life
- Serious adverse events (SAE) – clear evidence of immediate risk to life or welfare for the participants or others.

Monitoring of all potential safety concerns will cover both active monitoring of the online platform communications (e.g. participants' post made on forums) and query/concerns raised by participants (e.g. those who send messages through our platform). In all circumstances, the online facilitator will contact the participant concerned and offer support through online or phone communication, in addition to signposting them to relevant local services. In the unlikely event of SAEs, we will contact the relevant local authorities (e.g. Police or social services) as appropriate. Such safety monitoring and support mechanisms are outlined in the participant information sheet.

Recording and coding of safety and untoward events will be conducted on a continuous basis. These will also be reported to the TSC prior to each of the biannual TSC meeting or at an ad hoc basis if indicated, both for consensus on coding and for safety monitoring. In the event of SAEs, these need to be reported to both the TSC chair and the sponsor within 48 hours.

Overall adverse effects, including the number of UCo, AE, and SAE, will be recorded by number of events, types and participants across both arms. In addition, we will also record and report participant withdrawals from the study.

Trial status and review

The trial is registered with the Current Controlled Trials registration under the title "Randomised controlled trial of COPE-support online resource for carers" (ISRCTN 89563420 [<https://doi.org/10.1186/ISRCTN89563420>], registration date: 02/03/2018). This study has also been reviewed and approved by South Central – Oxford C Research Ethics Committee (Reference: 18/SC/0104) and Health Research Authority (Reference: IRAS 240005). Recruitment for the trial commenced in March 2018 and will continue till early 2020. Participants are covered by indemnity and insurance for harm associated with the protocol provided by the Sponsor, St George's, University of London.

Data analysis

Statistical analysis plan

The data analysis will be performed by the trial statisticians who will be blind to randomized allocation for the

primary and secondary outcome analysis. Primary analyses will be undertaken on an intent-to treat (ITT) basis, including all participants who were randomized and supplied at least one post-randomisation measure at 10, 20, or 40 weeks, regardless of usage status or withdrawal from the study. For the primary analysis, a linear mixed model will be used. The model will include participant and cohort as random effects and arm, time (10, 20, 40 weeks), the randomization stratification variable gender as well as baseline score and a time-by-arm interaction. In order to improve precision we will adjust for variables parent (Y/N) and living with the cared-for individual (Y/N). The model's assumptions for random effects distributions and residuals will be investigated. If assumptions are not appropriate then transformation will be considered. This model will be used to estimate the mean difference and 95% CI in WEMWBS between arms at the 20-week time point (i.e. primary endpoint) though we will also explore and report the intervention effect at week 10 and 40. The model will be fitted using restricted maximum likelihood (REML). Secondary outcome measures will be assessed using similar approach. No interim analyses will be performed.

It is unlikely that missing baseline data will be problematic for the analysis as baseline outcomes are required to be collected prior to randomization. Further, as the analysis uses a mixed model which is efficient for missing data under the missing at random assumption [41] no multiple imputation will be performed. Sensitivity analysis will include exploring the mean WEMWBS score at each time point if all participants with missing information was set at the highest and lowest values seen in the dataset.

Further analysis after the analyses of primary and secondary outcomes will not be blind as this is not feasible. The intervention effect in those that use COPE-support (defined as having at least two logins) will be estimated using a complier adjusted case analysis (CACE) with "usage" treated as both a binary and ordinal variable.

Mediation measures analysis

A mediation measures analysis will be performed if there is an intervention effect identified through the primary analysis. We will explore if the effect worked through the mechanisms underlying the intervention design and as hypothesized by the adapted stress-appraisal-coping model applied in family caregiving [22, 42]. The mechanisms to be investigated include:

- Appraisal measured by ECI [8] – exploring the effect of cognitive perception of the caregiving situation as the stressor;
- Perceived support measured using the support subscale of CWS [35] – via use of the peer-to-peer forum and satisfaction with support received;

- Mental health knowledge assessed by MAKS [34] – via psychoeducation provided by the intervention.

The mediation analysis will allow us to decompose the total observed intervention effect into mediated (indirect) and non-mediated (direct) component and we will use a structural equation modelling approach. Wellbeing (WEMWBS) will be measured at 20 weeks and 40 weeks and mediators at all time points (i.e. 10, 20 and 40 weeks) but “adjusted” for previous level and/or baseline as indicative. We will fit each mediator in turn separately and then undertake a multiple mediation analysis. A full statistical analysis plan will be available on request from the lead trial statistician (VC).

Qualitative data analysis

Transcribed qualitative data collected on participants’ experience in using COPe-support will be analysed using the framework analysis method [38, 43], in order to explore participants’ experiences and understanding of the processes whereby the intervention might bring about change.

Reporting and dissemination

The trial will be reported following the Consolidated Standards of Reporting Trials guideline [44]. We aim to disseminate the results of this study widely, through publication in peer-reviewed journals and presentations at national and international conferences. Our study website (www.cope-support.org) will serve as a communication portal providing updates and outputs from the study and links to all publications.

Discussion

Despite clinical guidelines recommending psychoeducation, especially those delivered to carers using a group format as an effective support for carers, its provision remains scarce [2, 16]. Caregiving, although bringing positives to both personal experiences and bonds with significant others, often causes burden and distress in carers. Given carers’ wellbeing is correlated with their caregiving capacity, which can also affect the quality of support the cared-for person receives, it is paramount that carers have access to an effective treatment. Digital mental health interventions delivered through the internet offer novel and flexible solutions to disseminating evidence-based psychosocial interventions to carers [17]. The trial of COPe-support represents one step closer to providing carers access to digital mental health interventions.

This study will provide valuable evidence regarding the effectiveness of a web-based psychoeducation intervention integrated with peer support for carers. Despite the proliferation of digital mental health interventions,

there is scarce research on the effectiveness in the field of psychosis [17]. Meanwhile, carers’ need for such an intervention maybe particularly high given their diverse needs and many other commitments, such as work and their own families. Digital interventions offer advantages in that they increase user autonomy and anonymity, which may be important as stigma and lack of knowledge of, or access to services can impact upon help-seeking behaviour in carers [17, 45]. An intervention delivered through the internet may also offer the only means to provide, through the healthcare system, highly individualised care to a critical mass of carers [46].

While optimising all the potentials the internet offers into the study and intervention design, we are aware of the challenges common amongst digital interventions and online trials. Because digital interventions allow their users a self-directed approach in using the content, intervention usage or adherence is often much more heterogeneous [23, 47]. Trial attrition and disengagement are also expected issues [23, 25]. To account for potential drop out and disengagement, we have devised a facilitation protocol alongside the delivery of COPe-support, drawing strategies and ideas through extensive consultations with carers and a usability study on the intervention-prototype [22, 30]. We have used conservative recruitment and retention estimation taking lessons from the few other similar trials with carer populations [39, 48]. Furthermore, we have also used a trial design that includes an internal pilot with keen monitoring on these parameters. We will review and revise our strategies at end of pilot to scale up to the full trial accordingly. In terms of the usage issue, we have put in place several strategies. We recognise COPe-support is a novel intervention delivered through the internet, and as such a conventional “adherence threshold” or per protocol usage pattern would not be appropriate. As no literature-based usage was identified [6], we consulted experts through experience and clinical and academic experts in the field to identify and define the meaningful usage definitions used in the study protocol. We are particularly interested in understanding (1) how carers will use COPe-support, and (2) if there is a differential intervention effects in those who have decided to log-in COPe-support twice or more and use it in different extent. For such goals, we consider it important to carry out the “complier average causal effect” (CACE) analysis [23, 27]. This is because the primary analysis using the ITT model, although the gold standard, will have neglected the usage effects, if any.

To our knowledge, the current study is one of the first to test online psychoeducation integrated with peer support for psychosis carers, compared to an attention control. In addition to enhance participant retention, we are mindful to design the control to match online resources

typically available to carers as part of usual care. Although the choice of an attention control may reduce effect sizes, this stricter examination should result in stronger arguments for the use of interactive and moderated web-based interventions (such as COPE-support), rather than non-interactive information passively delivered through the internet.

Abbreviations

AE: Adverse event; CACE: Complier adjusted case analysis; COPE-support: Carers for People with Psychosis e-support; CWS: Carer Wellbeing & Support Questionnaire; ECI: Experience of Caregiving Inventory; EFFIP: E-support for Families and Friends of Individuals affected by Psychosis Project; EQ-5D-5L: EuroQol 5 level version of EQ-5D; FQ: Family Questionnaire; ITT: Intention-to-treat; MAKs: Mental Health Knowledge Schedule; RCT: Randomized controlled trial; SAE: Serious adverse event; TSC: Trial Steering Committee; UCo: Unintended consequence; UC: Usual care; VLE: Virtual learning environment; WEMWBS: Warwick-Edinburgh Mental Wellbeing Scale

Acknowledgements

The authors thank all the input and contributions from the Expert Advisory Group members who helped design COPE-support and the members of the Project Reference Group which provides oversight of the overall EFFIP project delivery. They are: Ellen Harris; Jacqueline Marks; Angela Ryan; Storm Ryan; Lana Samuels; Dr. Clive Travis; Leigh Wallbank; and Dr. Elen Williams (see <http://cope-support.org/team/>).

We are very grateful to all the members of the Trial Steering Committee, including, Paul Kenny, Eva Klamerus, Christine Lewis, Dr. Bryn Lloyd-Evans (Chair), Dr. Louise Marston, and Professor Jo Smith.

We thank all the members who help run the Ask the Experts forum. They include: Ana Maria Corredor Collazos; David Coughlin; Dr. Ranjita Dhital; Sian Evans; Dr. Ban Haider; Julia Heathcote; Dr. Claire Henderson; Dr. Sarah Mansfield; Dr. Aileen O'Brien; Mona Qassim; Juliet Sserunkuma; Dr. Clive Travis; and Dr. Elen Williams.

For recruiting participants into the study, the project team acknowledges the support of the National Institute for Health Research, through the Clinical Research Network (Division 4).

Authors' contributions

JS conceived of the study and initiated the study design with supervision from CH and SG. JS is the grant holder. JS, CH, SG, LW, ASH, DPS further developed the design and its implementation. VC, TC, JE act as trial statisticians and led the development of the statistical analysis plan. RB provided input to support study conduct and data management. All authors read and approved the final manuscript.

Funding

This trial, as part of a bigger research programme entitled EFFIP (E-support for Families and Friends of Individuals affected by Psychosis) is funded by the National Institute for Health Research under its Post Doctoral Research Fellowship (awarded to Dr. Jacqueline Sin, reference: PDF-2015-08-035). The study was peer reviewed by the funding body.

The views expressed in this publication are those of the author(s) and not necessarily those of the NHS, the National Institute for Health Research or the Department of Health and Social Care. The funder had no involvement in the design of this study and will not have any role during its execution, analyses or interpretation of data, writing the manuscript, and decision to submit the manuscript for publication.

Availability of data and materials

The datasets generated during and/or analysed during the current study will not be shared or publicly available due to conditions on participant consent and other ethical restrictions, as registration of the trial predated open data recommendations.

Ethics approval and consent to participate

This study has been reviewed and approved by South Central – Oxford C Research Ethics Committee (Reference: 18/SC/0104) and Health Research

Authority (Reference: IRAS 240005). Prior to study participation all participants are required to view and give consent online to the information that was provided in the Participant Information Sheet.

Consent for publication

Not applicable.

Competing interests

All authors declare that they have no competing interests.

Author details

¹Population Health Research Institute, St George's, University of London, Cranmer Terrace, London SW17 0RE, England, UK. ²School of Psychology & Clinical Language Sciences, University of Reading, Earley Gate, Reading RG6 6AL, England, UK. ³Health Service & Population Research Department, King's College London, Institute of Psychiatry, Psychology & Neuroscience, De Crespigny Park, London SE5 8AF, England, UK. ⁴Imperial Clinical Trials Unit, School of Public Health, Imperial College London, Stadium House, 68 Wood Lane, London, England W12 7RH, UK. ⁵Department of Clinical Sciences, Liverpool School of Tropical Medicine, Pembroke Place, Liverpool L3 5QA, England, UK. ⁶Institute of Medical and Biomedical Education, St George's, University of London, Cranmer Terrace, London SW17 0RE, England, UK.

Received: 31 January 2020 Accepted: 3 March 2020

Published online: 17 March 2020

References

- Shahly V, Chatterji S, Gruber MJ, Al-Hamzawi A, Alonso J, Andrade LH, Angermeyer MC, Bruffaerts R, Bunting B, Caldas-de-Almeida JM, et al. Cross-national differences in the prevalence and correlates of burden among older family caregivers in the World Health Organization (WMH) surveys. *Psychol Med*. 2013;43(4):865–79.
- NICE. Psychosis and schizophrenia in adults: treatment and management (National Clinical Guideline no. 178). London: National Collaboration Centre for Mental Health; 2014.
- The Schizophrenia Commission. The Abandoned Illness - A report by the Schizophrenia Commission. London: Rethink Mental Illness; 2012.
- Carers Trust. Key facts about carers and the people they care for [<https://carers.org/key-facts-about-carers-and-people-they-care/>]. Last accessed 20th Dec 2019.
- Sin J, Norman I. Psychoeducational interventions for families of individuals with schizophrenia: a mixed method systematic review. *J Clin Psychiatry*. 2013;74(12):e1145–62.
- Sin J, Gillard S, Spain D, Cornelius V, Chen T, Henderson C. Effectiveness of psychoeducational interventions for family carers of people with psychosis: a systematic review and meta-analysis. *Clin Psychol Rev*. 2017;56:13–24.
- Pharoah F, Mari J, Rathbone J, Wong W. Family intervention for schizophrenia Cochrane Database of Systematic Reviews 2010 (Issue 12. Art. No.: CD000088).
- Szmukler G, Burgess P, Herrman H, Benson A, Colusa S, Bloch S. Caring for relatives with serious mental illness; the development of the experience of caregiving inventory. *Soc Psychiatry Psychiatr Epidemiol*. 1996;31:137–48.
- Kuipers E, Raune D. The early development of EE and burden in the families of first onset psychosis. In: Birchwood M, Fowler D, editors. *Early Intervention in Psychosis: A Guide to Concepts, Evidence and Interventions*. Chichester: Wiley; 2000. p. 128–40.
- Smith L, Onwumere J, Craig T, McManus S, Bebbington P, Kuipers E. Mental and physical illness in caregivers: results from an English national survey sample. *Br J Psychiatry*. 2014;205:197–203.
- Beaumont J, Thomas H. ONS. Measuring National Well-being, Health, 2012. London: Office for National Statistics; 2012.
- McManus S, Bebbington P, Jenkins R, Brugha T, editors. *Mental health and wellbeing in England: adult psychiatric morbidity survey 2014*. Leeds: NHS Digital; 2016.
- Sin J, Murrells T, Spain D, Norman I, Henderson C. Wellbeing, mental health knowledge and caregiving experiences of siblings of people with psychosis, compared to their peers and parents: an exploratory study. *Soc Psychiatry Psychiatr Epidemiol*. 2016;51:1247–55.
- Bebbington PE, Kuipers E. The predictive utility of expressed emotion in schizophrenia. *Psychol Med*. 1994;24:707–18.

15. Schizophrenia RAJ. In: Cucciare MA, Weingardt KR, editors. Using Technology to Support Evidence-Based Behavioural Health Practices - A Clinician's Guide. New York: Routledge; 2010. p. 69–90.
16. Yesufu-Udechuku A, Harrison B, Mayo-Wilson E, Young N, Woodhams P, Shiers D, Kuipers E, Kendall T. Interventions to improve the experience of caring for people with severe mental illness: systematic review and meta-analysis. *Br J Psychiatry*. 2015;206:268–74.
17. Sin J, Henderson C, Spain D, Cornelius V, Chen T, Gillard S. eHealth interventions for family carers of people with long term illness: a promising approach? *Clin Psychol Rev*. 2018;60:109–25.
18. Powell J, Chiu T, Eysenbach G. A systematic review of networked technologies supporting carers of people with dementia. *J Telemed Telecare*. 2008;14:154–6.
19. Sherifali D, Usman Ali M, Ploeg J, Markle-Reid M, Valaitis R, Bartholomew A, Fitzpatrick-Lewis D, McAiney C. Impact of internet-based interventions on caregiver mental health: systematic review and meta-analysis. *J Med Internet Res*. 2018;20(7):e10668.
20. Vaughan C, Trail TE, Mahmud A, Dellva S, Tanielian T, Friedman E. Informal caregivers' experiences and perceptions of a web-based peer support network: mixed-methods study. *J Med Internet Res*. 2018;20(8):e257.
21. Grover M, Naumann U, Mohammad-Dar L, Glennon D, Ringwood S, Eisler I, Williams C, Treasure J, Schmidt U. A randomized controlled trial of an internet-based cognitive-behavioural skills package for carers of people with anorexia nervosa. *Psychol Med*. 2011;41(12):2581–91.
22. Sin J, Henderson C, Woodham LA, Sesé Hernández A, Gillard S. A multicomponent eHealth intervention for family carers for people affected by psychosis: a coproduced design and build study. *J Med Internet Res*. 2019;21(8):e14374.
23. Murray E, Khadjesari Z, White IR, Kalaitzaki E, Godfrey C, McCambridge J, Thompson SG, Wallace P. Methodological challenges in online trials. *J Med Internet Res*. 2009;11(2):e9.
24. Christensen H, Griffiths KM, Farrer L. Adherence in internet intervention for anxiety and depression: systematic review. *J Med Internet Res*. 2009;11(2):1–16.
25. Eysenbach G. The law of attrition. *J Med Internet Res*. 2005;7(1):e11.
26. Schulz KF, Chalmers I, Hayes RJ, Altman DG. Empirical evidence of bias. Dimensions of methodological quality associated with estimates of treatment effects in controlled trials. *JAMA*. 1995;273(5):408–12.
27. White IR. Uses and limitations of randomization-based efficacy estimators. *Stat Methods Med Res*. 2005;14(4):327–47.
28. Eysenbach G. CONSORT-EHEALTH Group. CONSORT-EHEALTH: Improving and Standardizing Evaluation Reports of Web-based and Mobile Health Interventions. *J Med Internet Res*. 2011;13(4):e126.
29. Tennant R, Hiller L, Fishwick R, Platt S, Joseph S, Welch S, Parkinson J, Secker J, Stewart-Brown S. The Warwick-Edinburgh mental Wellbeing scale (WEMWBS): development and UK validation. *Health Qual Life Outcome*. 2007;5:63.
30. Sin J, Woodham LA, Henderson C, Williams E, Sese Hernandez A, Gillard S. Usability evaluation of an eHealth intervention for family carers of individuals affected by psychosis: a mixed-method study. *Digit Health*. 2019; 5:2055207619871148.
31. Bryson A, Green F, Bridges S, Craig R. Well-being, health and work. In: MJ CR, editor. Health survey for England 2010. London: The Health and Social Care Information Centre. p. 2011. Chapter 7.
32. Bridges S. Wellbeing. In: Craig R, Mindell J, editors. Health Survey for England 2012. London: The Health and Social Care Information Centre. p. 2013. Chapter 6.
33. Maheswaran H, Weich S, Powell J, Stewart-Brown S. Evaluating the responsiveness of the Warwick Edinburgh mental well-being scale (WEMWBS): group and individual level analysis. *Health Qual Life Outcomes*. 2012;10(1):156.
34. Evans-Lacko S, Little K, Meltzer H, Rose D, Rhydderch D, Henderson C, Thornicroft G. Development and psychometric properties of the mental health knowledge schedule (MAKS). *Can J Psychiatr*. 2010;55:440–8.
35. Quirk A, Smith S, Hamilton S, et al. The development and validation of the Carer well-being and support (CWS) questionnaire. *Ment Health Rev*. 2012; 17(3):128–38.
36. Wiedemann G, Rayki O, Feinstein E, Hahlweg K. The family questionnaire : development and validation of a new self-report scale for assessing expressed emotion. *Psychiatry Res*. 2002;109:265–79.
37. Devlin NJ, Krabbe PFM. The development of new research methods for the valuation of ED-5D-5L. *Eur J Health Econ*. 2013;14(S1):S1–3.
38. Ritchie J, Lewis J, McNaughton Nicholls C, Ormston R, editors. Qualitative research practice: a guide for social science students and researchers. 2nd ed. Los Angeles: Sage; 2014.
39. Sin J, Henderson C, Pinfold V, Norman I. The E sibling project - exploratory randomised controlled trial of an online multi-component psychoeducational intervention for siblings of individuals with first episode psychosis. *BMC Psychiatry*. 2013;13:123.
40. NatCen Social Research, UCL. Health Survey for England 2017. London: Health and Social Care Information Centre; 2018.
41. White IR, Horton NJ, Carpenter J, Pocock SJ. Strategies for intention to treat analysis in randomised trials with missing outcome data. *BMJ*. 2011;342:d40.
42. Szmukler G. From family 'burden' to caregiving. *Psychiatr Bull*. 1996;20:449–51.
43. Spencer LS, Ritchie J, Ormston R, O'Connor W, Barnard M. Analysis: principles and processes. In: Ritchie J, Lewis J, McNaughton Nicholls C, Ormston R, editors. Qualitative Research Practice: A Guide for Social Science Students and Researchers. London: SAGE Publications Ltd.; 2014.
44. Boutron I, Altman DG, Moher D, Schulz KF, Ravaud P. CONSORT NPT Group. CONSORT Statement for Randomized Trials of Nonpharmacologic Treatments: A 2017 Update and a CONSORT extension for nonpharmacologic trial abstracts. *Ann Intern Med*. 2017;167(1):40–7.
45. Henderson C, Thornicroft G. Evaluation of the Time to Change programme in England 2008–2011. *Br J Psychiatry*. 2013;202(Supplement 55):s45–8.
46. Andrews G, Titov N. Treating people you never see: internet-based treatment of the internalising mental disorders. *Aust Health Rev*. 2010;34(2): 144–7.
47. Powell J, Hamborg T, Stallard N, Burls A, McSorley J, Bennett K, Griffiths KM, Christensen H. Effectiveness of a web-based cognitive-behavioural tool to improve mental well-being in the general population: randomised controlled trial. *J Med Internet Res*. 2013;15(1):e2.
48. Lobban F, Robinson H, Appelbe D, Barraclough J, Bedson E, Collinge L, Dodd S, Flowers S, Honary M, Johnson S, et al. Protocol for an online randomised controlled trial to evaluate the clinical and cost-effectiveness of a peer-supported self-management intervention for relatives of people with psychosis or bipolar disorder: relatives education and coping toolkit (REACT). *BMJ Open*. 2017;7:e016965.

Publisher's Note

Springer Nature remains neutral with regard to jurisdictional claims in published maps and institutional affiliations.

Ready to submit your research? Choose BMC and benefit from:

- fast, convenient online submission
- thorough peer review by experienced researchers in your field
- rapid publication on acceptance
- support for research data, including large and complex data types
- gold Open Access which fosters wider collaboration and increased citations
- maximum visibility for your research: over 100M website views per year

At BMC, research is always in progress.

Learn more biomedcentral.com/submissions

