

The influence of mid-latitude cyclones on European background surface ozone

Article

Published Version

Creative Commons: Attribution 3.0 (CC-BY)

Open Access

Knowland, K. E., Doherty, R. M., Hodges, K. I. ORCID: <https://orcid.org/0000-0003-0894-229X> and Ott, L. E. (2017) The influence of mid-latitude cyclones on European background surface ozone. *Atmospheric Chemistry and Physics*, 17 (20). pp. 12421-12447. ISSN 1680-7316 doi: 10.5194/acp-17-12421-2017 Available at <https://centaur.reading.ac.uk/72491/>

It is advisable to refer to the publisher's version if you intend to cite from the work. See [Guidance on citing](#).

Published version at: <https://www.atmos-chem-phys-discuss.net/acp-2017-318/>

To link to this article DOI: <http://dx.doi.org/10.5194/acp-17-12421-2017>

Publisher: European Geosciences Union

All outputs in CentAUR are protected by Intellectual Property Rights law, including copyright law. Copyright and IPR is retained by the creators or other copyright holders. Terms and conditions for use of this material are defined in the [End User Agreement](#).

www.reading.ac.uk/centaur

CentAUR

Central Archive at the University of Reading

Reading's research outputs online



The influence of mid-latitude cyclones on European background surface ozone

K. Emma Knowland^{1,2}, Ruth M. Doherty³, Kevin I. Hodges⁴, and Lesley E. Ott²

¹Universities Space Research Association (USRA)/Goddard Earth Science Technology & Research (GESTAR), Columbia, Maryland, USA

²Global Modeling and Assimilation Office (GMAO), NASA Goddard Space Flight Center (GSFC), Greenbelt, Maryland, USA

³School of Geosciences, University of Edinburgh, Edinburgh, UK

⁴Dept. of Meteorology, University of Reading, Reading, UK

Correspondence to: K. E. Knowland (k.e.knowland@nasa.gov)

Received: 5 April 2017 – Discussion started: 29 May 2017

Revised: 6 September 2017 – Accepted: 8 September 2017 – Published: 19 October 2017

Abstract. The relationship between springtime mid-latitude cyclones and background ozone (O_3) is explored using a combination of observational and reanalysis data sets. First, the relationship between surface O_3 observations at two rural monitoring sites on the west coast of Europe – Mace Head, Ireland, and Monte Velho, Portugal – and cyclone track frequency in the surrounding regions is examined. Second, detailed case study examination of four individual mid-latitude cyclones and the influence of the associated frontal passage on surface O_3 is performed. Cyclone tracks have a greater influence on the O_3 measurements at the more northern coastal European station, Mace Head, located within the main North Atlantic (NA) storm track. In particular, when cyclones track north of 53° N, there is a significant relationship with high levels of surface O_3 (> 75 th percentile). The further away a cyclone is from the NA storm track, the more likely it will be associated with both high and low (< 25 th percentile) levels of O_3 at the observation site during the cyclone's life cycle. The results of the four case studies demonstrate (a) the importance of the passage of a cyclone's cold front in relation to surface O_3 measurements, (b) the ability of mid-latitude cyclones to bring down high levels of O_3 from the stratosphere, and (c) that accompanying surface high-pressure systems and their associated transport pathways play an important role in the temporal variability of surface O_3 . The main source of high O_3 to these two sites in springtime is from the stratosphere, either from direct injection into the cyclone or associated with aged airstreams from decaying downstream

cyclones that can become entrained and descend toward the surface within new cyclones over the NA region.

1 Introduction

Tropospheric ozone (O_3), which is harmful to human health and vegetation (Scherrer et al., 2006; Krzyzanowski and Cohen, 2008), has both natural and man-made sources. In the free troposphere, O_3 can be transported over large distances as it has a lifetime on the order of a few weeks (Akimoto, 2003; Monks et al., 2009). Rural monitoring ground stations, which are not influenced by local emission sources, are used to monitor the “clean” hemispheric baseline, or background, levels of pollutants such as O_3 (e.g., Parrish et al., 2012; Torseth et al., 2012; Wilson et al., 2012). The measurements from these remote stations in Europe previously have been used to study the concentrations of O_3 in polluted air arriving from different source regions separate from the background O_3 levels (e.g., Li et al., 2002; Wilson et al., 2012). A large number of observations (about 70 %) taken at the Mace Head station on the west coast of Ireland have been found to be associated with maritime air from over the North Atlantic (NA) and the remainder are associated with continental European air (Jennings et al., 1991; Simmonds et al., 1997).

The meteorological factors – wind speed and direction, humidity, and temperature – that impact the variability of pollutant concentrations are determined by the large-scale

nearby atmospheric pressure centers. For western Europe, this is mainly the location of two climatological features: (1) the semi-permanent Icelandic Low between 60 and 65° N, due in part to the NA storm track (the region known for frequent, strong cyclones) and (2) the semi-permanent Azores High over the Atlantic Ocean near 40° N. Studies of airflow relative to cyclones' frontal zones have led to three-dimensional (3-D) conceptual models of cyclones with generally three main airstreams: a warm conveyor belt (WCB; Harrold, 1973), a cold conveyor belt (CCB; Carlson, 1980), and the dry intrusion (DI; Browning, 1997). The horizontal and vertical transport of air within these airstreams can play an important role in the redistribution not only of moisture, heat, and momentum but also chemical properties of the air from different source regions (Bethan et al., 1998). The frequent cyclones associated with the Icelandic Low can entrain polluted air from different source regions, primarily Europe and North America (Merrill, 1994; Parrish et al., 2012). During stagnant conditions, there is pollution build-up which can be dispersed by passing cyclones (Mickley et al., 2004; Hegarty et al., 2007; Leibensperger et al., 2008; Barnes and Fiore, 2013). Within the cyclones, the polluted air at the surface is lofted up into the free troposphere by the WCB (e.g., Bethan et al., 1998; Cooper et al., 2002b; Hannan et al., 2003; Trickl et al., 2003). Once in the free troposphere, pollutants can be transported rapidly in the stronger westerly winds and eventually become mixed with the background composition (e.g., Trickl et al., 2003; Cooper et al., 2004b). The pollutant-enriched air can descend in downwind systems as part of the DI airstream behind the cold front of a mid-latitude cyclone (hereafter, referred to as cyclone) or as part of a nearby anticyclone (Danielsen, 1980; Bader et al., 1995; Trickl et al., 2003).

In addition to the transport of anthropogenic O₃, cyclones enable the vertical transport of O₃ from the lower stratosphere into the troposphere (stratosphere-to-troposphere transport: STT) (e.g., Danielsen, 1968, 1980; Sprenger and Wernli, 2003; Škerlak et al., 2014). Several studies have shown that STT events which reach the surface can lead to higher surface O₃, of the order of 20–50 ppbv higher than the background levels for the hourly mean, leading to peak surface O₃ concentrations of up to 100 ppbv (e.g., Derwent et al., 1978; Davies and Schuepbach, 1994; Lin et al., 2012a). This can result in surface O₃ exceeding air quality standards, especially at high elevations such as in the western USA (e.g., Langford et al., 2009, 2015; Lefohn et al., 2012; Lin et al., 2012a, 2014). In particular, Lin et al. (2012a) found that in spring 2010 up to 60 % of total modeled surface O₃ in the western USA during air quality exceedances could be attributed to stratospheric intrusions of O₃, while at Mace Head, using a tagged tracer approach, Derwent et al. (2004) diagnosed stratospheric O₃ to contribute to at least 25 % of the observed annual mean O₃. However, the direct connection between STT and peaks in ground-level O₃ observations are generally infrequent, with only

a small fraction of STT trajectories descending below the mid-troposphere (Viezee et al., 1983; Derwent et al., 1998; Eisele et al., 1999; Stohl, 2001; Škerlak et al., 2014). Air from the free troposphere is largely limited to daytime entrainment into the lowest layer of the atmosphere as the planetary boundary layer (PBL) height increases (e.g., Itoh and Narazaki, 2016; Ott et al., 2016); however, the ability for O₃-rich air to reach the surface depends on a complex array of factors including the diurnal cycle (Itoh and Narazaki, 2016; Langford et al., 2009, 2012; Ott et al., 2016) and the seasonal cycle of the PBL height (Langford et al., 2015, 2017), the presence of convective mixing (Thompson et al., 1994; Eisele et al., 1999; Langford et al., 2017), and the elevation of the monitoring station, which if located within the free troposphere, especially with the nighttime collapse of the PBL, can experience direct STT (Langford et al., 2015, 2017). The influence of the stratospheric air, although weaker by the time the air reaches the surface (Monks, 2000), can last longer in the mid- to lower troposphere if the O₃-rich air becomes entrained in high-pressure systems behind the surface cold front and continues to subside (Danielsen, 1980; Davies and Schuepbach, 1994; Cooper et al., 2004b).

Previous studies of O₃ measurements at these stations have not focused on the specific role of the cyclones on the temporal variability of O₃ (e.g., Simmonds et al., 1997; Derwent et al., 2004, 2008). The aim of this study is to quantify the influence synoptic-scale extratropical cyclones have on the temporal variability of surface O₃ on the west coast of Europe when cyclones are nearby. In particular, we address the following questions:

- Do passing cyclones have a detectable impact on surface O₃ observations?
- What are the key synoptic features associated with cyclones that impact surface O₃ concentrations?

To address these questions, the sensitivity of O₃ measurements at two coastal observation sites – one within the main NA storm track region (Mace Head) and the other south of the main NA storm track region (Monte Velho, Portugal) – will be tested in relation to the frequency and passage of cyclones. This will be followed by detailed analysis of the dynamical processes within four individual cyclones and their possible impact on tropospheric O₃ distributions. The focus of this study will be on surface O₃ in the spring (MAM) since this is the principal season for intercontinental transport of O₃ across the NA (Monks, 2000; Stohl et al., 2002; Dentener et al., 2010). Furthermore, STT events exhibit a springtime maximum due to the build-up of O₃ in the lower stratosphere over the winter and spring (Danielsen and Mohnen, 1977; Holton et al., 1995; Monks, 2000; Pausata et al., 2012). Also in springtime, there is a peak in the seasonal O₃ cycle at marine, background stations including Mace Head (Simmonds et al., 1997; Wilson et al., 2012; Derwent et al., 2016); at such stations there is often a minimum in O₃ in summer

as a result of enhanced O_3 loss by increased water vapor within the stable marine boundary layer (MBL) (Ayers et al., 1992; Oltmans and Levy, 1994), in contrast to urban environments with the peak in O_3 in summer associated with photochemical production. Parrish et al. (2016) and Derwent et al. (2016) demonstrate that the seasonal cycle of O_3 at MBL stations, including Mace Head, can be reasonably represented by two harmonics of the seasonal cycle with the first explaining most of the seasonal variation, capturing the summertime minimum in O_3 and a spring maximum in O_3 as the late winter/early spring maximum in free tropospheric O_3 is entrained into the MBL.

The article continues with a description of the data used, including the O_3 observations and the reanalysis variables (Sect. 2). The methodology is presented in Sect. 3. The relationship between cyclones and O_3 observations is quantified in Sect. 4. Section 4 also provides a detailed analysis of the airstreams and O_3 distributions within the cyclone case studies. Discussion of how cyclones may influence the temporal variability of the surface O_3 observations is given in Sect. 5, with final conclusions in Sect. 6.

2 Data

Three different types of data are used in this study. The ground-based observation data are first presented followed by descriptions of the reanalyses and a modeled stratospheric tracer.

2.1 Surface O_3 data

Mace Head (MH: 53.3° N, 9.9° W; location indicated by the blue dot in Fig. 1) is located on the west coast of Ireland. Surface O_3 measurements, supported by the European Monitoring and Evaluation Programme (EMEP; www.emep.int), are hourly averages of O_3 taken every 10 s using a commercial UV spectrometer (model 8810, Monitor Labs, USA) (Derwent et al., 1998; Simmonds et al., 2004) for the period 1 April 1988–31 December 2012 (<http://actris.nilu.no>, last retrieved 6 February 2015).

Monte Velho (MV: 38.08° N, 8.8° W; location indicated by the orange dot in Fig. 1) is a rural observation site on the west coast of Portugal, also supported by EMEP, which began hourly surface O_3 observations on 1 January 1988 and continued for 21 years, ending on 31 December 2009 (<http://actris.nilu.no>, last retrieved 6 February 2015). Observations were made using Dasibi analyzer instruments: the original instrument was replaced in 1999, which again failed in 2010 and was not replaced until 2014 (Lourdes Bugalho, personal communication). The total number of years in this study for Monte Velho is 19 years, from 1989 to 2009, exclusive of 1999 and 2005, when data are missing.

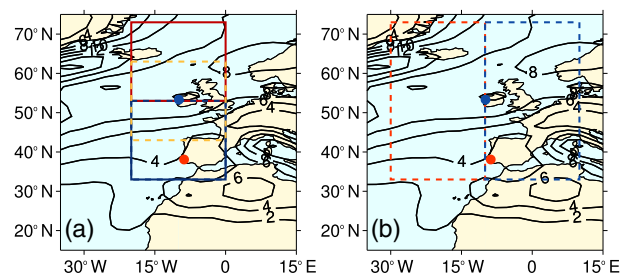


Figure 1. Maps showing the five regions where cyclones pass near Mace Head (blue dot) which are associated with O_3 measurements from Mace Head. (a) North region 53–73° N, 20° W–0° (red box); Center: 43–63° N, 20° W–0° (yellow box); and South: 33–53° N, 20° W–0° (blue box). (b) West: 33–73° N, 30–10° W (orange box); East: 33–73° N, 10° W–10° E (blue box). In addition, track density distribution for cyclones from ERA-Interim for MAM 1979–2011 (black contour lines; interval of two cyclones per month per 5° spherical cap) and Monte Velho (orange dot) are indicated.

2.2 Modeled data

Numerous previous studies of long-range transport of trace gases have used chemistry-transport models (CTMs) nudged by reanalysis meteorological fields and are validated against observations. Knowland et al. (2015) was the first study to use the Monitoring Atmospheric Composition and Climate (MACC) project's reanalysis data set (Inness et al., 2013), a combined 3-D meteorological and composition data set, to explore the relationship between cyclones and air pollution transport of O_3 and carbon monoxide (CO). Through a composite cyclone analysis, it was clearly shown that intense cyclones over the North Pacific (NP) and NA regions redistribute O_3 and CO horizontally and vertically within the WCB and DI airstreams (Knowland et al., 2015). Therefore, this reanalysis data set can be used to both establish the location and intensity of the cyclones and link the detailed meteorological fields with tropospheric and lower stratospheric composition.

In this study, four different model data sets are used which includes three reanalyses – the European Centre for Medium-Range Weather Forecasts' (ECMWF) ERA-Interim reanalysis (Dee et al., 2011), the MACC reanalysis, and NASA's Modern-Era Retrospective Analysis for Research and Applications Version-2 (MERRA-2) reanalysis (Bosilovich et al., 2015) – and a stratospheric tracer data set (Ott et al., 2016). The ERA-Interim cyclone tracks are used here to establish the long-term relationship between cyclones and O_3 observations. Since the MACC reanalysis uses a similar atmospheric model to ERA-Interim, MACC is used to explore the mechanisms within the case study cyclones that can influence surface O_3 concentrations at Mace Head and Monte Velho. The MERRA-2 reanalysis also provides 3-D distributions of O_3 , although MERRA-2 O_3 is less ideal for analysis of surface O_3 concentrations since MERRA-2 O_3 does not have

a detailed chemistry scheme or emission sources for the troposphere (Wargan et al., 2015, 2017). The MERRA-2 reanalysis, which has the potential to identify more features within the cyclones as the resolution is higher than the MACC reanalysis, is used in conjunction with the MACC reanalysis to provide a measure of uncertainty to the case study analysis. The stratospheric tracer, which uses a similar atmospheric model to the MERRA-2 reanalysis, provides additional information on air mass origin. While models and reanalyses with coarse horizontal resolution (> 100 km) are able to identify stratospheric intrusions (Roelofs et al., 2003; Lin et al., 2015; Ott et al., 2016), the fine-scale nature of the O_3 filaments is best identified at higher horizontal resolutions (Büker et al., 2005; Lin et al., 2012a; Ott et al., 2016), such as the MACC and MERRA-2 reanalyses and by the stratospheric tracer. However, even high-resolution reanalyses may struggle to represent the complex structure of stratospheric intrusions (e.g., Trickl et al., 2016).

2.2.1 The ERA-Interim reanalysis data set

The ERA-Interim reanalysis data set is available from 1 January 1979 to 3 months prior to present day at 6-hourly resolution (Dee et al., 2011). It is produced with the ECMWF's Integrated Forecast System (IFS) cycle 31r2 (a full history of changes made to the ECMWF IFS, as indicated by the cycle number, is available at <https://www.ecmwf.int/en/forecasts/documentation-and-support/changes-ecmwf-model>), with a sequential four-dimensional variational data assimilation (4-D-Var) scheme using 12-hourly analysis cycles (Dee et al., 2011). ERA-Interim has a spectral spatial resolution of TL255 (nominally 0.7° longitude and latitude) with 60 vertical levels from the surface to 0.1 hPa.

This study uses the ERA-Interim 6-hourly 850 hPa relative vorticity (ζ_{850}) field for cyclone tracking. It also uses the potential vorticity (PV) field for diagnosing the dynamical tropopause whereby the dynamical tropopause is determined as the 2 PVU (1 PV unit (PVU) = $10^{-6} \text{ K m}^2 \text{ kg}^{-1} \text{ s}^{-1}$; Holton et al., 1995) isosurface.

2.2.2 The MACC reanalysis data set

The MACC reanalysis data set, which covers the period 2003–2012, is produced with the ECMWF IFS model two-way coupled to a CTM. The IFS assimilates the same conventional meteorological observations as ERA-Interim as well as satellite observations of three reactive gas species: CO , O_3 , and nitrogen oxides (NO_x) (Flemming et al., 2009; Inness et al., 2013). Although the IFS cycle (cycle 36r1) is a more recent cycle than used for ERA-Interim, the meteorology in the two reanalyses is similar. The CTM is a modified version (Stein, 2009; Stein et al., 2012) of the Model for OZone And Related chemical Tracers (MOZART-3; Kinnison et al., 2007) with the chemical reactions of 115 species in the troposphere and stratosphere (Stein, 2009; Stein et al.,

2012; Inness et al., 2013). The two models are run in parallel and, every hour, the IFS provides the CTM with the updated mixing ratios after the horizontal and vertical advection of the assimilated chemical species (Flemming et al., 2009; Stein, 2009; Stein et al., 2012). In turn the CTM provides the IFS system with updated chemical tendencies which are used to constrain the assimilated species. The MACC reanalysis has the same spatial (TL255) and temporal (6-hourly) resolution as the ERA-Interim reanalysis.

In the model evaluation, Inness et al. (2013) compared EMEP O_3 observations from all available EMEP monitoring stations at low altitudes (< 600 m) to the MACC reanalysis O_3 and found that the O_3 was underestimated in the reanalysis during spring over central and northern Europe (based on 27 stations within $40\text{--}50^\circ \text{ N}$ and 72 stations within $50\text{--}70^\circ \text{ N}$, respectively, absolute monthly biases in spring ranged between about -2 and -9 ppbv for both regions) and agreed well (small overestimation) for southern Europe (based on five stations within $30\text{--}40^\circ \text{ N}$; absolute monthly biases in spring ranged between about 1 and 2 ppbv). The reason(s) for the biases in the seasonal O_3 is not known although Inness et al. (2013) hypothesize that the biases in the MACC surface O_3 are related to the diurnal cycle possibly due to (1) there is no diurnal cycle in the NO_x emissions used in the CTM resulting in negative O_3 biases during the daytime and positive O_3 biases during the nighttime, (2) misrepresentation of vertical mixing between the boundary layer and free troposphere, and/or (3) less observations are available (and therefore not assimilated) at night. For full details on the input emission data sets and model validation see Inness et al. (2013) and references therein.

In order to evaluate the horizontal and vertical distributions of O_3 within cyclones, several parameters from the MACC reanalysis are used following Knowland et al. (2015). These variables include ζ_{850} , mean sea level pressure (MSLP), zonal and meridional wind components (u and v , respectively), vertical velocities (ω), temperature (T), specific humidity (q), and O_3 mixing ratios. Variables required on pressure levels were extracted on twelve pressure levels from 1000 to 200 hPa. The equivalent potential temperature, θ_e , is obtained using T and q . In this study, ω in pressure coordinates (hPa h^{-1}) is multiplied by -1 in order to have the sign be positive to indicate ascent and negative to indicate descent. Since the MACC reanalysis did not archive PV data, instead the ERA-Interim PV data are used to determine the dynamical tropopause as the MACC and ERA-Interim reanalyses are similar in terms of the IFS and data assimilation.

2.2.3 The MERRA-2 reanalysis data set

NASA's MERRA-2 reanalysis is the most recent reanalysis product from NASA's Global Modeling and Assimilation Office (Bosilovich et al., 2015). It is a high-resolution data set (0.5° latitude \times 0.625° longitude, 72 vertical levels from surface to 0.01 hPa; Bosilovich et al., 2015, 2016; Gelaro et al.,

2017) for the period from 1 January 1980 to within a couple weeks of real time. The MERRA-2 reanalysis is a product of the Goddard Earth Observing Systems Model Version 5 (GEOS-5) data assimilation system (DAS) version 5.12.4 atmospheric general circulation model (AGCM), with 3-D-Var assimilation with the Gridpoint Statistical Interpolation scheme (GSI; Wu et al., 2002; Derber et al., 2003; Purser et al., 2003a, b) using 6-hourly analysis cycles. The GEOS-5 model includes a simplified ozone chemistry scheme for both the stratosphere and the troposphere based on monthly-dependent ozone production and loss rates derived from a two-dimensional chemistry model (Stajner et al., 2008; Bosilovich et al., 2015; Wargan et al., 2015). For the period since October 2004, the high-resolution stratospheric O₃ profiles from the Microwave Limb Sounder (MLS; Waters et al., 2006) and total column ozone from the Ozone Mapping Instrument (OMI; Levelt et al., 2006), both aboard NASA's Aura satellite, are assimilated (Bosilovich et al., 2015; Wargan et al., 2015; McCarty et al., 2016). Since the assimilated O₃ observations are mainly stratospheric, it is expected that the MERRA-2 analysis O₃ will realistically represent the direct influence of stratospheric O₃ into the troposphere, such as STT events; however O₃ concentrations will be biased low elsewhere in the troposphere (Ott et al., 2016).

The MERRA-2 variables used in this study include 6-hourly SLP, u , v , ω , Ertel's PV (EPV), T , q , and O₃ mixing ratios (GMAO, 2015a, b).

2.2.4 GEOS-5 stratospheric tracer

To provide more information on air mass origins, a simple stratospheric tracer has also been implemented in GEOS-5 (stratospheric fraction (STFR); Ott et al., 2016). At every model time step (7.5 min), the tracer is set to 1 above the tropopause (defined as the higher height of the thermal or dynamical tropopause) and reset to 0 at the surface. Values of this tracer quantify the fraction of air that has recently been in the stratosphere. For this study, STFR was computed by running the GEOS-5 AGCM constrained by the MERRA-2 meteorological reanalysis to ensure physical consistency with the ozone and meteorological reanalysis fields.

3 Methods of analysis of high and low O₃ observations and their relationship to cyclone tracks

3.1 Cyclone identification

The objective feature tracking algorithm, TRACK (Hodges, 1994, 1995, 1999), can be used to track synoptic-scale features such as minima in MSLP or maxima in relative vorticity (e.g., Hoskins and Hodges, 2002; Bengtsson et al., 2006, 2009; Catto et al., 2010; Knowland et al., 2015). Here, TRACK is used to identify cyclones as maxima in ζ_{850} in the ERA-Interim and MACC reanalyses. To be consistent with previous studies using TRACK, a spectral analysis, based on

a spherical harmonic expansion, is performed which allows the large-scale background field to be removed (planetary-scale waves with total wave number, n , ≤ 5). At the TL255 resolution of the ERA-Interim and MACC reanalyses, vorticity contains many small-scale features such as frontal regions, shear zones, and mesoscale features; therefore, to focus on the synoptic scales, the resolution is reduced to T42 using triangular truncation and spectral tapering of the coefficients (Hoskins and Hodges, 2002). The tracking is performed on the unit sphere and the tracks are constructed by minimizing a track smoothness cost function subject to adaptive constraints (Hodges, 1995, 1999). On completion of the tracking process, the stationary cyclones (travel < 1000 km during the cyclone's life cycle) and short-lived cyclones (cyclone's life cycle lasts < 2 days) are removed to focus on those cyclones which are likely to be mobile (Hodges, 1999) and hence contribute to O₃ transport.

3.1.1 O₃ observations associated with cyclone tracks

In order to relate the EMEP hourly O₃ observations to the cyclone frequencies, the hourly O₃ observations were averaged together every 6 h, with the first of the 6 h corresponding to the reanalysis time step. The 6-hourly averaged O₃ data are then matched to the cyclone tracks based on the reanalysis time step. The cyclone tracks, with the accompanying O₃ data, are then sorted by different regions relative to the observation site. A cyclone is considered as passing near Mace Head if one 6-hourly cyclone track point occurs within a 20° latitude by 20° longitude region, approximately 3×10^6 km², centered on Mace Head (hereafter referred to as the Center region, 43–63° N, 20° W–0°; yellow box; Fig. 1a). The size of the region was defined in order to capture the large spatial coverage of each cyclone, and in particular to capture the trailing cold fronts which can be on the order of 100 to 1000 km (Shapiro and Keyser, 1990). Four additional regions (North, South, East, and West) in the vicinity of Mace Head were defined to test the influence of the location of the cyclones and their associated fronts in relation to surface O₃ at Mace Head (see Fig. 1 caption). The equivalent five regions around Monte Velho (orange dot, Fig. 1) are defined such that the Center region is the 20° by 20° region centered around Monte Velho (28–48° N, 19° W–1° E), with the other regions defined in the same fashion as around Mace Head (not shown). The larger East and West domains in Fig. 1b are defined to examine the influence of the cyclones potentially interacting with relatively clean maritime air to the west of sites and relatively polluted continental air to the east of sites.

For each cyclone track point which occurred within the specified region, the accompanying 6-hourly averaged O₃ observation was classified as high, average, or low. To perform this analysis, the 6-hourly averaged O₃ data are first sorted by magnitude, and the percentile (pc) values were calculated in order to identify high O₃ (> 75 th pc values) and

low O_3 (< 25th pc values) for each spring at the two stations. The extreme high and extreme low O_3 values (95th and 5th pc, respectively), to represent the peak and baseline concentration levels, respectively, based on Wilson et al. (2012), are included in the Supplement. The percentile values were calculated for each spring separately to avoid capturing the increasing trend in background O_3 over the observation period. If the accompanying 6-hourly averaged O_3 observation was classified as either high or low O_3 at Mace Head then the entire cyclone track is classified as associated with high or low O_3 , respectively. However, with this methodology, it is noted that a cyclone track can be associated with both O_3 criteria.

To test if there is a significant difference in the levels of O_3 observed at Mace Head or Monte Velho associated with the passing of a cyclone, the χ^2 contingency test was used (Press et al., 1992). By calculating the χ^2 value for each season over the period of available observations, the χ^2 contingency test shows the number of years where there is a significant relationship between the high and low O_3 observations at the surface and the number of cyclone tracks in the area.

3.1.2 Case study cyclone identification

To investigate the temporal variability of O_3 at the surface with the passing of the cyclones and their associated fronts, several individual cyclones were identified in the MACC reanalysis with the specific objective of determining how high O_3 is associated with cyclone passage and dynamics. Over the NA region for the period 2003–2012, there is an exact match of about 90 % of the cyclone tracks between the MACC reanalysis and the ERA-Interim reanalysis (matching criteria similar to Hodges et al., 2011, of a minimum mean separation distance of 5° (geodesic) and at least 10 % of the track points overlap in time), with discrepancies generally occurring for weaker cyclones (Knowland, 2016). This is expected since the MACC reanalysis and the ERA-Interim reanalysis use similar systems in terms of data assimilation and IFS model and assimilate the same meteorological observations.

The following criteria were used to select cyclones for the case studies:

- Cyclones passing through the North and South regions of the two sites associated with high 6-hourly averaged O_3 (> 75th pc) were identified.
- Of all the cyclones identified, the strongest cyclones (where maximum $\zeta_{850} > 80$ th pc of springtime NA ζ_{850} ($8.0 \times 10^{-5} \text{ s}^{-1}$) within the region) were selected. This ensures that the cyclones will be within the top 20 % of the cyclones in the NA and that the cyclone is an exact match identified in both the ERA-Interim and the MACC reanalysis data sets (not shown). Moreover, the airstreams within strong cyclones will be more evident than in the weaker cyclones (Catto et al., 2010).

The strongest storms then have to satisfy the following additional criteria:

- The cyclones must have two or more 6-hourly time steps associated with high O_3 . This selects the cyclones that are associated with elevated levels of O_3 at the monitoring station which can be related to averaging periods typically used for policy metrics such as the daily maximum 8 h average O_3 .
- The difference between the high 6-hourly averaged O_3 observations and the MACC O_3 at 1000 hPa within the grid box of the observation site is ≤ 20 %.

If the additional criteria are not satisfied for the strongest cyclone, the criteria are then examined for the next strongest storm and so on until a cyclone is found which satisfies the criteria.

From the total MACC reanalysis cyclone tracks in the North and South regions, there were 171 and 121 cyclones in each region, respectively, that satisfied the requirement of high O_3 at Mace Head (Table 1). Of the 171 cyclones associated with high O_3 at Mace Head while in the North region, 20 of the cyclones are classified as strong (Table 1). The strongest of the 20 cyclones in the North region is selected for further study and hereafter referred to as the N1 cyclone (Table 1; see Fig. 2a). The N1 cyclone is one of the 58 intense cyclones used in the NA composite analysis of Knowland et al. (2015). In the South region, there are fewer strong cyclones associated with high O_3 at Mace Head (6 of the 121 cyclones, Table 1). The strongest cyclone in the South region will be referred to as the S1 cyclone (Table 1; see Fig. 2a). The N1 and S1 cyclones, with four and five high O_3 time steps while in the region, respectively, both satisfied the two additional criteria.

The same procedure was performed to select the case study cyclones for the regions near Monte Velho (95 and 69 cyclones in the North and South regions, respectively, Table 1). In the region to the north of Monte Velho, only 3 of the 95 cyclones which are associated with high O_3 observed at Monte Velho are classified as strong cyclones (Table 1). The third strongest cyclone was selected for further study as out of the three cyclones it was the only system with persistent high O_3 (two time steps). This cyclone will be referred to as the N2 cyclone (Table 1; see Fig. 2b).

In the South region, there are no “strong” cyclones associated with high O_3 at Monte Velho (Table 1). Here, the ζ_{850} threshold value was reduced to select moderate cyclones, where the maximum $\zeta_{850} > 50$ th pc of springtime NA ζ_{850} ($5.83 \times 10^{-5} \text{ s}^{-1}$), which identified four moderate cyclones in the South region associated with high O_3 (Table 1). The strongest of these four cyclones, the S2 cyclone (Table 1; see Fig. 2b), satisfies the additional criteria; in particular, during the S2 life cycle within the South region, there were seven time steps associated with high O_3 at Monte Velho.

Table 1. The number of cyclones by strength (where strong cyclones and moderate cyclones are a subset of all cyclones) from the MACC reanalysis associated with high 6-hourly averaged O_3 observations at Mace Head for the period 2003–2012 and at Monte Velho for the period 2003–2009 (exclusive of 2005) using the 6-hourly averaged O_3 pc values. The case study cyclones are included in the respective category.

	Number of cyclones (by strength) associated with high O ₃ (O ₃ > 75th pc)			Total tracks	Percent of all cyclones associated with high O ₃
	All cyclones	Strong cyclones	Moderate cyclones		
Mace Head					
North	171	20 (N1)	78	319	54 %
South	121	6 (S1)	32	253	48 %
Monte Velho					
North	95	3 (N2)	28	213	45 %
South	69	0	4 (S2)	117	59 %

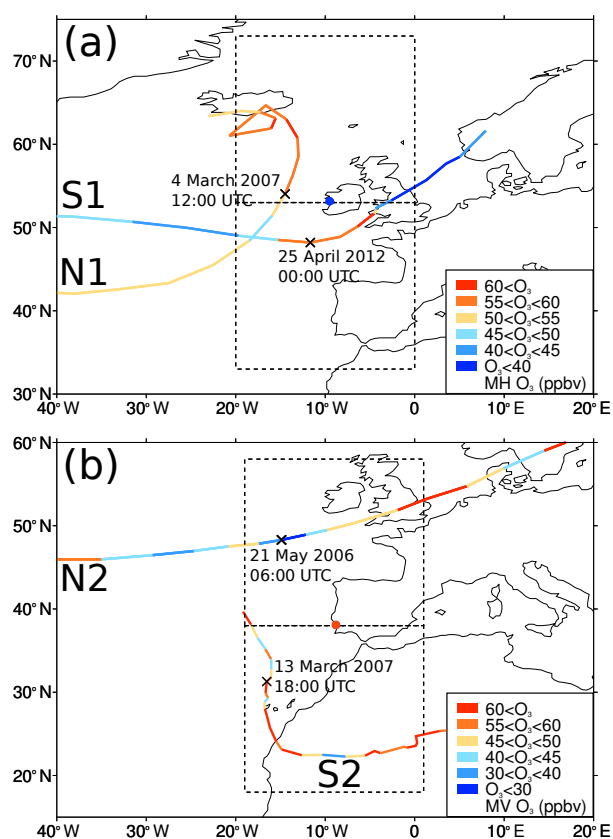


Figure 2. (a) Springtime strong cyclone tracks, N1 and S1, associated with high O_3 ($O_3 > 75$ th pc) at Mace Head (blue dot) while in the North and South regions, respectively. Tracks colored by MACC O_3 interpolated to the Mace Head location. (b) Springtime strong cyclone track, N2, in the North region and moderate cyclone track, S2, in the South region which are associated with high O_3 at Monte Velho (orange dot). Tracks colored by MACC O_3 interpolated to the Monte Velho location. The time of maximum vorticity of each track is given at the location along the track, indicated by the cross.

3.1.3 The thermal front parameter function

The distribution of O_3 within the airstreams of the case study cyclones is examined using both the geographical coordinate system and the cyclone-centered coordinate system (see appendix Bengtsson et al., 2007). In the geographical coordinates, archived MSLP analysis charts can be used to identify the fronts. In the cyclone-centered coordinate system, the cyclone fronts can be identified using an objective frontal location parameter. The thermal front parameter (TFP) function, given by Eq. (1), is the frontal location parameter calculated using θ_e on a given pressure surface (Clarke and Renard, 1966). With knowledge of the front locations, the airstreams within the strongest cyclones can then be identified and the vertical transport pathways for O_3 can be examined.

$$TFP \equiv -\nabla|\nabla\theta_e| \cdot \frac{\nabla\theta_e}{|\nabla\theta_e|} \quad (1)$$

4 Results

4.1 Overview of the relationship between cyclone frequency and surface O_3

The observed O_3 levels at the two sites are first examined in relation to the ERA-Interim reanalysis cyclone tracks due to its longer time period to match the O_3 observations. Here, tracks were not filtered for intensity. For springtime during the period of observations from 1988 to 2010 at Mace Head, the average number of the total cyclone tracks associated with $O_3 > 75$ th pc (hereafter, high O_3), $O_3 < 25$ th pc (hereafter, low O_3) or both high and low O_3 is shown in Table 2 as a percentage of the total tracks in each region. In addition, the number of years during 1988–2010 which have more tracks associated with high O_3 than with low O_3 and the number of years which have more tracks associated with low O_3 than

Table 2. The mean percent of cyclone tracks associated with high O₃ (> 75th pc) and low O₃ (< 25th pc) measured at the surface at (top) Mace Head based on each MAM season in the period 1988–2010 and (bottom) Monte Velho based on each MAM season in the period 1989–2009 (excluding 1999 and 2005, which had insufficient data). The total number of years in the (top) 23-year period (1988–2010) and (bottom) 19-year period (1989–2009, excluding 1999 and 2005) which have a greater number of tracks associated with O₃ > 75th pc and O₃ < 25th pc is also given. The total number of those years which have a significant χ^2 difference at $p < 0.05$ confidence interval is given in the brackets (SGF). See Sect. 3.1.1 for definition of regions.

Region	Mean percent of tracks per season associated with O ₃ > 75th pc	Number of years with more tracks associated with O ₃ > 75th pc (SGF)	Mean percent of tracks per season associated with O ₃ < 25th pc	Number of years with more tracks associated with O ₃ < 25th pc (SGF)	Mean number of tracks per season (MAM)	Percent of tracks associated with both high and low O ₃
Mace Head						
North	52 %	18 (15)	37 %	5 (0)	32	12 %
Center	51 %	17 (6)	41 %	6 (1)	30	14 %
South	45 %	7 (2)	53 %	16 (8)	25	20 %
West	51 %	11 (0)	52 %	12 (2)	50	20 %
East	48 %	15 (6)	45 %	8 (2)	52	15 %
Monte Velho						
North	51 %	8 (1)	52 %	11 (3)	29	18 %
Center	55 %	11 (1)	50 %	8 (2)	24	23 %
South	61 %	10 (2)	61 %	9 (3)	17	31 %
West	60 %	7 (4)	61 %	12 (2)	39	29 %
East	58 %	12 (4)	56 %	7 (0)	45	26 %

with high O₃ are shown in Table 2, including the number of years where this difference is significant (“SGF”) based on the χ^2 statistic.

There are higher mean percentages of tracks passing through the North and Center regions associated with high O₃ at Mace Head, 52 and 51 %, respectively, than with low O₃ at Mace Head, 37 and 41 %, respectively (Table 2). The North region has the greatest number of years (18 out of 23 years, Table 2) where the percentage of tracks associated with high O₃ is greater than the percentage of tracks associated with low O₃, where 15 of these years have a significant χ^2 difference (North region (SGF), Table 2). The Center region also has a large number of years (17 years) where the percentage of tracks associated with high O₃ is greater than the percentage of tracks associated with low O₃, although only about a third of those years have a significant difference (Table 2). In the South region, in contrast to the North and Center regions, there are more cyclones passing south of Mace Head (Table 2) which are associated with low O₃ at Mace Head (53 %) than with high O₃ (45 %). In the South region, there are 16 years which have more tracks associated with low O₃ than with high O₃, of which half of these years have significant differences (Table 2). The transition from significantly more cyclones in the North and Center regions (located within the main storm track region, Fig. 1) associated with high O₃ at Mace Head to significantly more cyclones in the South region (generally south of the main storm track region, Fig. 1) associated with low O₃ at Mace Head illustrates how O₃ levels are sensitive to the passage of cyclones and their frontal zones. The percent of tracks which have both high and low O₃ increased from 12 % in the North region to 20 % in the South region (Table 2).

The region east of Mace Head shows a slightly higher mean percentage of tracks associated with high O₃ compared to low O₃ (48 compared to 45 %, Table 2) with 15 out of 23 years marked by more tracks associated with high O₃ than low O₃ (6 of which were significant, Table 2) and 15 % of the tracks associated with both high and low O₃ observations. The West region has only a slightly higher mean percentage of tracks associated with low O₃ compared to high O₃ (52 compared to 51 %), with about half of the years (12 out of 23 years) with more tracks associated with low O₃ than high O₃ (Table 2) and 20 % of the tracks associated with both high and low O₃ observations. Although the differences are small and this method did not test which direction the cyclone tracks passed through the region, these results suggest that the cyclones in the East region are associated with more polluted air than cyclone tracks in the West region.

The relationship between cyclone location and surface O₃ is also examined for the southern site, Monte Velho (Table 2). The Center region has a greater mean percentage of cyclone tracks associated with high O₃ (55 %) compared to those associated with low O₃ (50 %), while in the remaining regions the difference between the mean percent of tracks associated with high O₃ and with low O₃ is small (Table 2). The number of these years having more tracks in the North, Center, and South regions associated with high O₃ is almost equal to the number of years which had more tracks associated with low O₃. Very few years have a significant χ^2 difference, possibly due to the percent of tracks associated with both high and low O₃ increases (up to 31 % of tracks) the further away from the main NA storm track (Table 2). However, there are a greater number of years (12 out of 19 years) where the cyclone tracks are associated with low O₃ to the

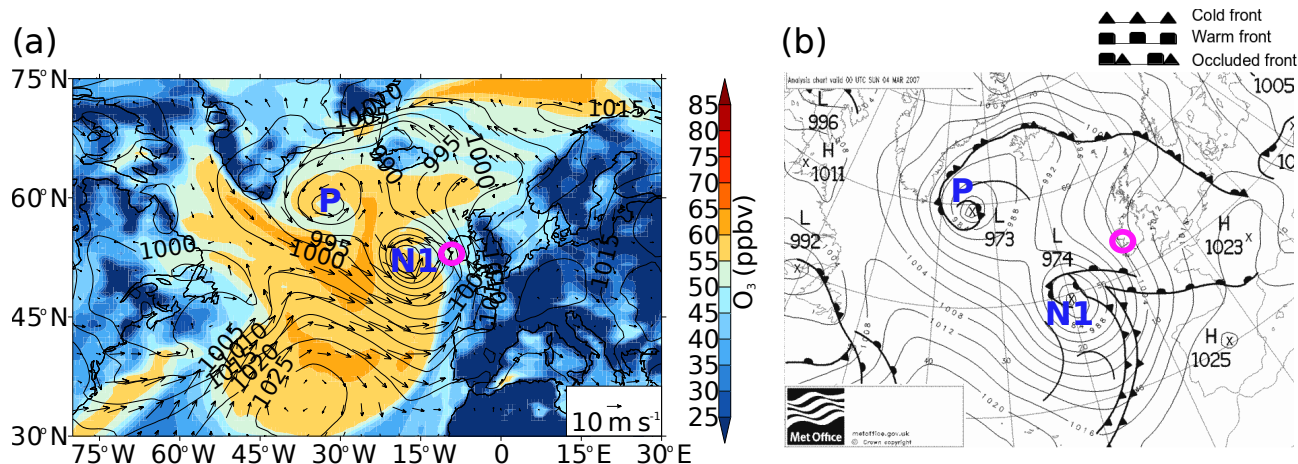


Figure 3. (a) 1000 hPa MACC O₃ (color) and horizontal wind vectors (10 m s⁻¹ reference arrow) and MSLP (solid contours, 5 hPa intervals) on 4 March 2007 at 00:00 UTC, 12 h prior to maximum ζ_{850} for N1 cyclone (N1: 52° N, 19° W). Parent low (P: 59° N, 34° W) is located between Greenland and Iceland. Mace Head indicated by the pink open circle. (b) Analysis chart for 4 March 2007 at 00:00 UTC from UK Met Office (available from archive at <http://www.wetterzentrale.de/topkarten/tkfaxbraar.htm>, retrieved 19 May 2015) shows the complex fronts associated with the N1 cyclone and the parent low. Mace Head (pink circle) is located to the north of the N1 warm front.

west of Monte Velho, and also 12 years where the cyclone tracks are associated with high O₃ when tracks are to the east of Monte Velho (Table 2). Despite the small differences in the mean percent of tracks (and the small number of significant years) associated with high and low O₃ at Monte Velho, this indicates that the cyclone tracks still play a role in affecting surface O₃ measurements at Monte Velho associated with the temporal variability of O₃.

In summary, the O₃ measurements at Mace Head and Monte Velho are influenced by cyclone tracks passing in the vicinity of the observation sites. The relationship between the O₃ observed and the cyclone tracks varies at the two observation sites. In the following sections, several individual cyclone tracks are selected using the MACC reanalysis and examined using the MACC and MERRA-2 reanalyses and the STFR tracer to identify the possible sources of high O₃ as well as the transport pathways of O₃ within the cyclones which can affect the surface O₃ observations at Mace Head and Monte Velho.

4.2 Cyclone case studies associated with high O₃ at Mace Head

The four case study cyclones, selected in Sect. 3.1.2, are shown in Fig. 2 with the tracks colored by the corresponding MACC reanalysis O₃ at Mace Head (N1 and S1 tracks, Fig. 2a) and Monte Velho (N2 and S2 tracks, Fig. 2b).

The N1 cyclone occurred during March 2007. The N1 cyclone track across the NA is further south than the S1 cyclone track before it turns northward, remaining to the west of Mace Head. During the time the N1 cyclone is in the North region (4–7 March 2007), high O₃ (> 55 ppbv) occurs for about a day and a half at Mace Head. The S1 cyclone oc-

curred at the end of April 2012. As the S1 cyclone passes to the south of Mace Head, there is an increase in O₃ until it leaves the South region.

In May 2006, the N2 cyclone moves through the North region about 10° (approximately 1000 km) to the north of Monte Velho (Fig. 2b), so that Monte Velho was likely impacted by the trailing cold front. The N2 cyclone is a good example of how surface O₃ levels can vary during the life cycle of a passing cyclone. At the time of maximum vorticity, the surface O₃ at Monte Velho is < 30 ppbv, while just before the N2 cyclone leaves the North region the O₃ concentration at Monte Velho has nearly doubled (Fig. 2b). The S2 cyclone also occurred in March 2007, shortly after the N1 cyclone. The S2 cyclone originates about 10° to the west of Monte Velho and slowly tracks to the southeast toward and across North Africa (Fig. 2b). There is high O₃ (> 45 ppbv) at Monte Velho during the majority of the S2 cyclone's life cycle in the South region.

The following sections will explore in more detail how the dynamics of the case study cyclones influenced the surface O₃ at Mace Head and Monte Velho. The synoptic conditions during different stages in the life cycle of the case study cyclones are described using the MACC reanalysis data set and, where stated, also using the MERRA-2 reanalysis data set and the STFR tracer, in order to investigate the importance of time and location of the cyclone relative to the high and low O₃ observations at the monitoring stations.

4.2.1 N1 cyclone: synoptic conditions associated with high O₃ at Mace Head

The N1 cyclone is a secondary frontal cyclone which formed over the western NA (42.6° N, 50.6° W) on 2 March 2007 at

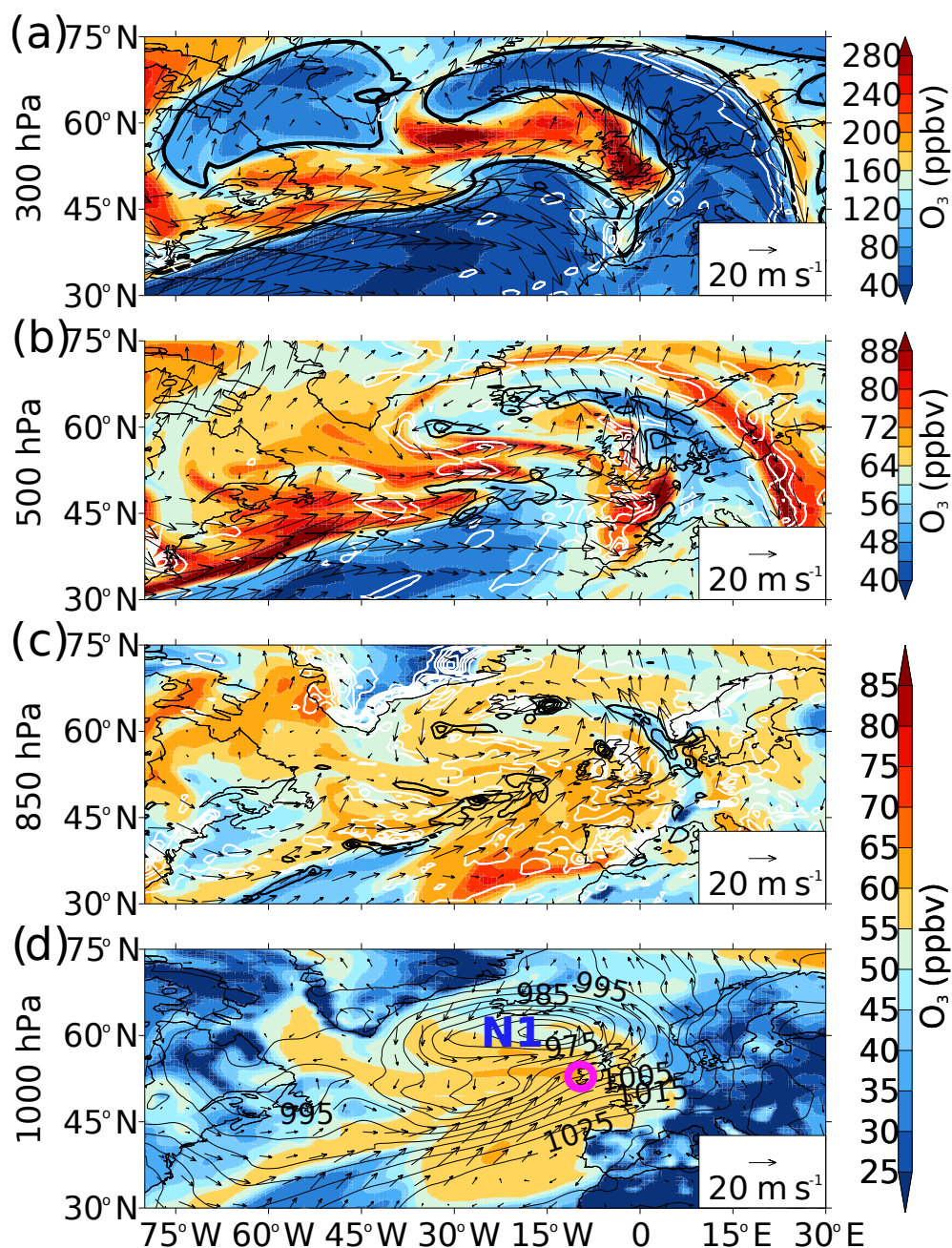


Figure 4. Synoptic conditions and O_3 distribution for the N1 cyclone (**d**; 59°N , 13°W) on 5 March 2007 at 00:00 UTC, 24 h after Fig. 3. High O_3 was reported at Mace Head. O_3 (color; note different scales used for different levels) and horizontal winds (20 m s^{-1} reference arrow) are shown on four levels: **(a)** 300 hPa, **(b)** 500 hPa, **(c)** 850 hPa, and **(d)** 1000 hPa. In addition, MSLP (**d**; solid contours, 5 hPa intervals), ω (**a**–**c**; black contours for positive values indicating ascent, 15 hPa h^{-1} contour intervals, and white contours for descent, -5 hPa h^{-1} contour intervals), and 2 PVU isosurface (**a**; thick contour) are shown.

06:00 UTC from the parent low located between Greenland and Iceland. Analysis of the N1's life cycle indicates there is high O_3 already in the lower troposphere over the Labrador Sea (up to 70 ppbv at 1000 hPa) which had descended from the stratosphere as part of the DI airstream of the parent low (not shown). This O_3 -rich air appears to be advected toward

Mace Head by the N1 cyclone (Figs. 3a and 4). Nearly 2 days after the N1 cyclone formed, high levels of O_3 ($> 55\text{ ppbv}$, Fig. 3a) at 1000 hPa are then advected southeastward into the NA behind the cold front of the N1 cyclone (see Fig. 3b for location of fronts) and northward around the parent low (Fig. 3a). The high O_3 eventually reaches Mace Head on

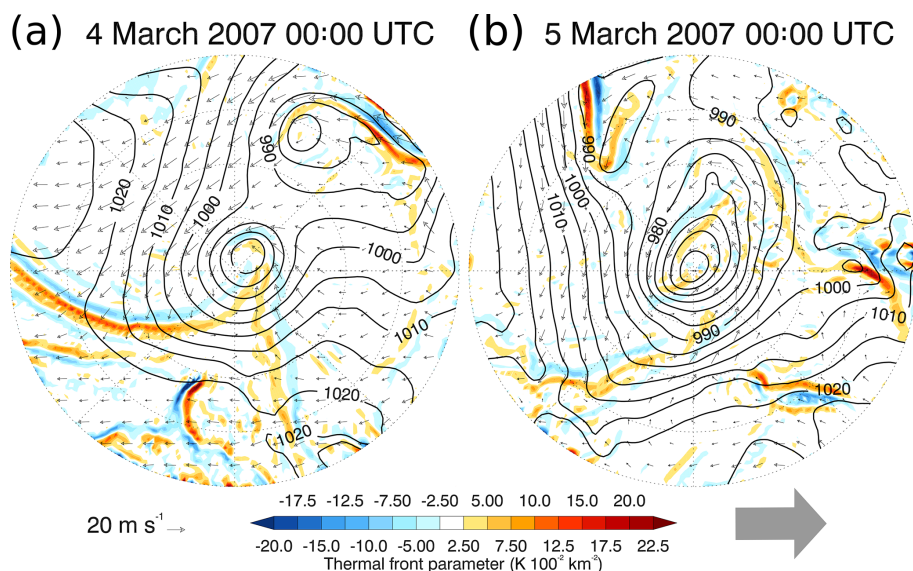


Figure 5. N1 cyclone-centered MSLP (solid black contours, 5 hPa contour intervals), 925 hPa system relative horizontal winds (20 m s^{-1} , reference arrow), and 925 hPa thermal front parameter (color, $2.5 \text{ K } 100^{-2} \text{ km}^{-2}$ intervals) on (a) 4 March 2007 at 00:00 UTC and (b) 5 March 2007 at 00:00 UTC. Radial dotted lines are plotted every 45° and dotted circles represent 5, 10, 15, and 20° radii from cyclone center. The cyclone has been rotated in order that the direction of cyclone propagation is toward the right, indicated by the large grey arrow. NB: geographical north for (a) and (b) is toward the right of the page.

5 March 2007 at midnight, after the cold front has passed over Mace Head (Fig. 4d), and persists until 6 March 2007 at 12:00 UTC.

At the time of maximum vorticity ($\zeta_{850} \times 11.56 \times 10^{-5} \text{ s}^{-1}$, 4 March 2007, 12:00 UTC, not shown), the N1 cyclone and its decaying parent low merged at the surface, intensifying the N1 cyclone. Strong westerly winds developed throughout the troposphere across the NA region as a result of the large pressure difference between the low-pressure systems in the NA (the N1 cyclone and an upstream low over Newfoundland) and the Azores High (Fig. 4d). In addition to the descent (white contour lines indicate ω , Fig. 4a–c) of stratospheric O_3 -rich air within the DI of the N1 cyclone, O_3 -rich air from aloft (300 and 500 hPa) has descended toward the surface from the stratosphere as part of DI in the upstream low (Fig. 4a–d). The strong westerly winds appear to transport this O_3 -rich air across the western NA (Fig. 4a–d). This results in persistent high O_3 observed at Mace Head in the days following the maximum vorticity of the N1 cyclone (Fig. 4d), and even after the cyclone has left the North region (Fig. 2a).

The N1 cyclone is a good example of how one cyclone can bring both low and high O_3 to Mace Head. Prior to maximum vorticity, low O_3 , defined to be less than the MAM 2007 6-hourly averaged O_3 25th pc value of 39.1 ppbv, is reported at Mace Head on 4 March 2007 at 00:00 UTC (Fig. 3a). Figure 3a shows there is a sharp contrast in O_3 ($> 10 \text{ ppbv}$) at the cold frontal boundary, with higher O_3 levels behind the cold front and lower O_3 levels ahead of the cold front in the warm sector between 30 and 50° N . This low O_3 is advected

from the subtropics northward towards Mace Head parallel to the cold front within the warm sector (Fig. 3a).

The distribution of O_3 within the airstreams of the N1 cyclone can be examined by using a cyclone-centered coordinate system (Figs. 5–7 and S1–S4 in the Supplement). Here, the reanalyses are sampled onto a radial grid centered on the cyclone track points within a 20° (approximately 2000 km) radius with the cyclones rotated to be moving from left to right in the figures following Bengtsson et al. (2007). For discussion of the cyclone-centered maps, the unit circle with cardinal points is used instead of using geographical coordinates such that the direction of cyclone propagation is from “west” to “east” (Knowland et al., 2015).

In the cyclone-centered coordinate system, the fronts are identified using the TFP function (Fig. 5). In Fig. 5a, the TFP values on the 925 hPa surface on 4 March 2007 at 00:00 UTC show there is a baroclinic zone (strong horizontal temperature gradient on a constant pressure surface) or front from the N1 cyclone center toward the west/southwest (relative to the direction of cyclone propagation) as well as another one to the south/southeast. However, this does not indicate whether the fronts are warm fronts or cold fronts. Using the synoptic chart in Fig. 3b, in combination with the system-relative winds (where the speed of the cyclone propagation has been subtracted from the winds about each cyclone; Catto et al., 2010; Dacre et al., 2012; Knowland et al., 2015) and the MSLP contours in Fig. 5, the front trailing from the center of the N1 cyclone toward the west is diagnosed as a cold front and the weaker baroclinic zone in the bottom right quadrant is a warm front (Fig. 5a). There is an additional baro-

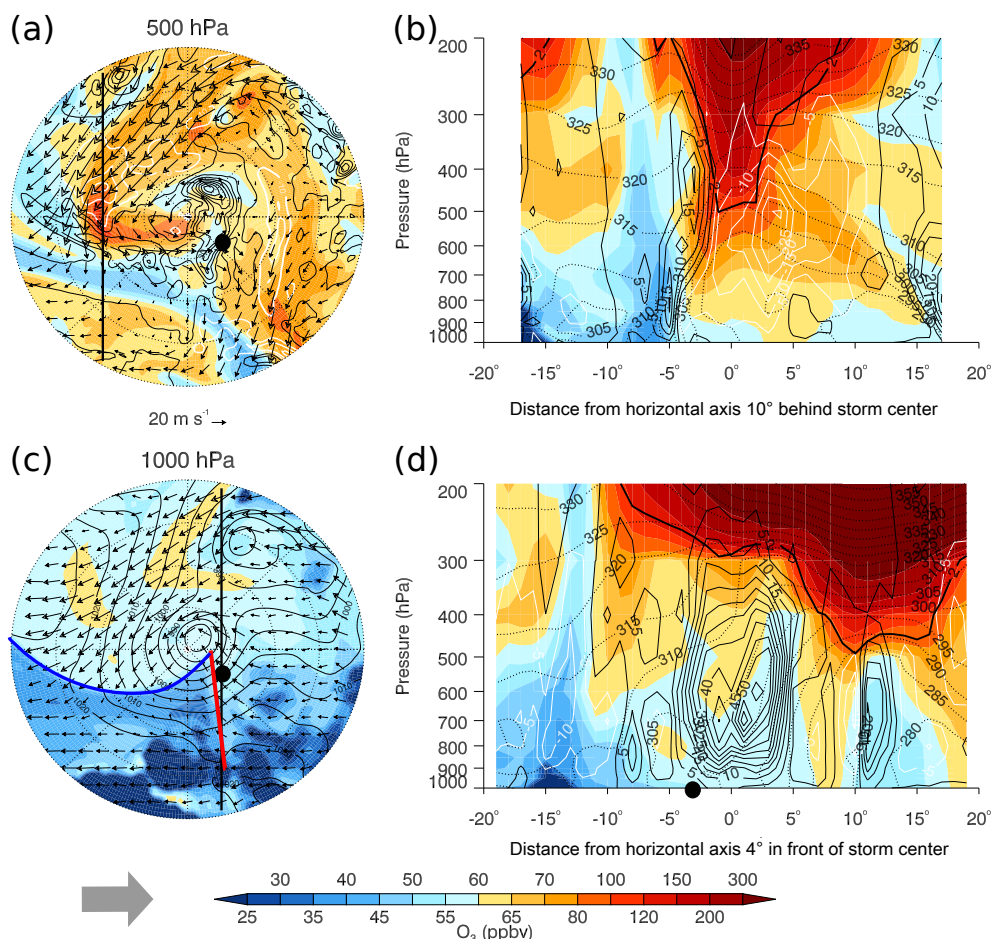


Figure 6. N1 cyclone-centered O_3 (color) and system relative winds (20 m s^{-1} , reference arrow) on 4 March 2007 at 00:00 UTC: (a) 500 hPa with ω (10 hPa h^{-1} contour intervals, with black contours for positive values indicating ascent and white contours for negative values indicating descent) and (c) 1000 hPa with MSLP (solid black contours, 5 hPa contour intervals) and approximate location of the warm (red line) and cold (blue line) fronts based on Figs. 3b and 5a. The cyclone has been rotated in order that the direction of cyclone propagation is toward the right, indicated by the grey arrow. The additional thick vertical lines in (a) and (c) indicate the location of the vertical transects (b and d) of O_3 (color), ω (5 hPa h^{-1} contour intervals, with black contours for positive values indicating ascent and white contours for negative values indicating descent), θ_e (dotted contour lines, 5 K intervals), and the 2 PVU isosurface for the dynamical tropopause (thick solid contour): (b) 10° behind the cyclone center and (d) 4° ahead of cyclone center, respectively. The cross sections are $< 40^\circ$ diameter with positive axis values to the north. The approximate location of Mace Head is indicated by the large black dot (a, c, d).

clinic zone associated with the parent low in the top right quadrant as well as other baroclinic zones within the warm sector of the cyclone that are not seen in the analysis chart (Fig. 3b). A day later, the N1 cyclone has become occluded and the baroclinic zones are weak around the cyclone center and along the trailing cold front which is now further to the south (Fig. 5b).

The main feature at 4 March 2007 at 00:00 UTC in both the meteorological fields and O_3 distribution is the cold frontal boundary which separates the WCB and DI airstreams (Fig. 6). The strong cold frontal boundary features as the sharp gradient in the 1000 hPa O_3 distribution and the curve in the isobars in the southwest quadrant of Fig. 6c (similar to Fig. 3). The front is identified between -5 and -2°

throughout the troposphere by a strong gradient in equivalent potential temperature, θ_e , from 1000 to 400 hPa, located between the high values of θ_e (warm and moist) to the south of the cyclone center (-15 to -5°) compared to the lower values of θ_e (cool and dry) to the north (-2 to 15° , Fig. 6b). Ahead of the cold front, the WCB airstream transports O_3 -poor air into the N1 cyclone (Fig. 6). The WCB airstream can be identified by the region of strong ascent (Fig. 6a) throughout the troposphere (-5° , 1000–400 hPa; Fig. 6b), with the maximum ascent to the north of Mace Head (maximum $\omega > 60 \text{ hPa h}^{-1}$ at 700 hPa, Fig. 6a and d). Within the N1 cyclone, O_3 -rich air descended toward the surface within the DI airstream; however this is far from Mace Head (about 1400 km) at this time (Fig. 6a and b). Stratospheric

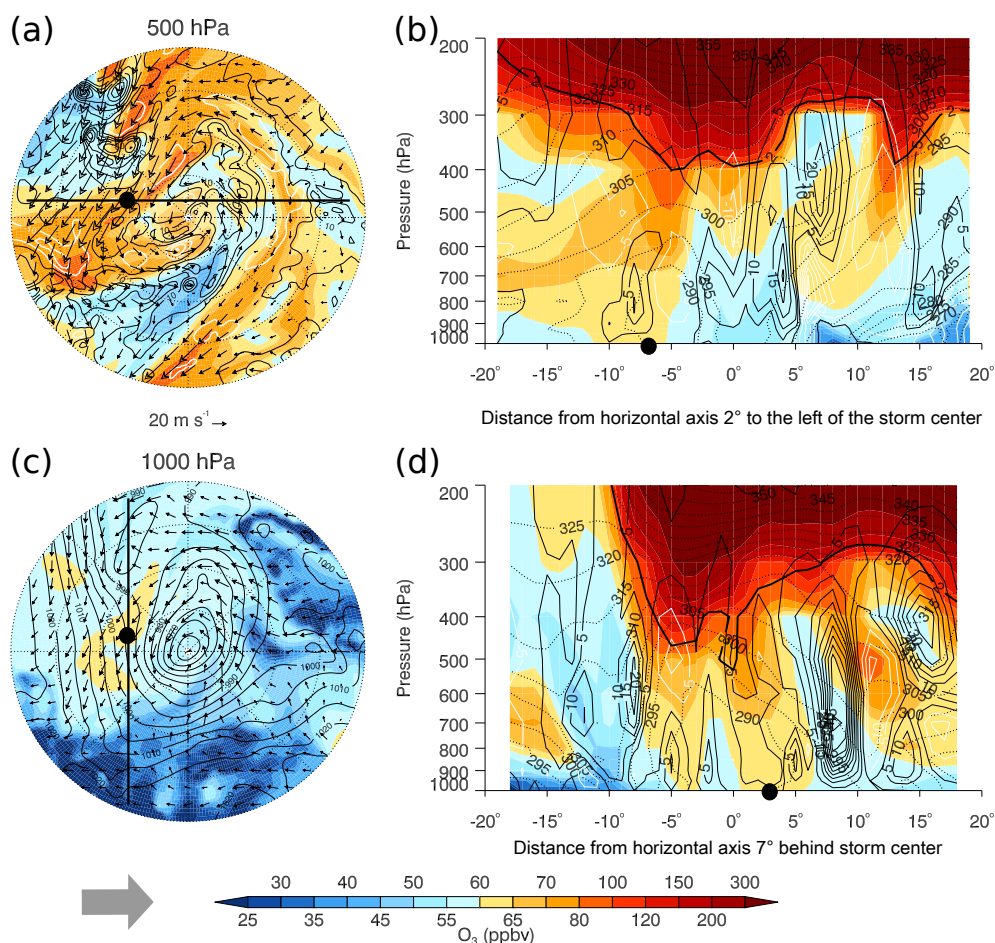


Figure 7. N1 cyclone on 5 March 2007 at 00:00 UTC, similar to Fig. 6, except 24 h later. The additional thick vertical lines (a, c) indicate the location of the vertical transects (b) 2° to the north of the cyclone center and (d) 7° behind the cyclone center, respectively. The cross sections have positive axis values to the east (a, b) and to the north (c, d). The approximate location of Mace Head is indicated by the large black dot. The cyclone has been rotated in order that the direction of cyclone propagation is toward the right, indicated by the grey arrow.

O₃-rich air, identified here by high levels of O₃ (> 100 ppbv) above the dynamical tropopause (thick solid black contour), reaches down to nearly 500 hPa behind the cold front (−2 to 3°, Fig. 6b). There is further isentropic descent (along constant θ_e contours) of the relatively high levels of O₃ behind the cold front over a large area between −5 and 15°, with strong descent of $\omega \leq -30$ hPa h^{−1}. This results in high O₃ (> 55 ppbv) at 1000 hPa behind the surface cold front (−5 to 17°, Fig. 6b and c). The stratospheric fraction of air behind the cold front is ≥ 30 % down to 700 hPa and ≥ 10 % down to 850 hPa (Fig. S2b).

A day later, the cold front associated with the N1 cyclone has passed over Mace Head and high O₃ (55 ppbv) is reported at the surface. There are elevated levels of O₃ in both reanalyses: the MACC reanalysis at the 1000 hPa near Mace Head > 60 ppbv (Fig. 7c) and the MERRA-2 O₃ at 950 hPa is 45–50 ppbv (Fig. S3c). Since the cyclone has started to decay, it is more difficult to identify the fronts and airstreams within the cyclone (Fig. 5b). The maximum WCB ascent

ahead of the N1 cyclone at 500 hPa ($\omega > 30$ hPa h^{−1}, Fig. 7a) is approximately half the value compared to the day before ($\omega > 60$ hPa h^{−1}, Fig. 6a). However, there are strong values of positive ω at 500 hPa (Fig. 7a and d) associated with the upstream cyclones (closest cyclone is identified as a closed low contour to the northwest of the N1 cyclone in Fig. 7c). The DI airstream has also weakened, yet the tropopause is still visibly depressed at 400 and 500 hPa (Fig. 7b and d, respectively) and high levels of O₃ (> 55 ppbv) are present throughout the mid- to lower troposphere (Fig. 7b and d). The O₃ originally from the stratosphere has descended isentropically toward the surface near the location of Mace Head (black dot, near −7° in Fig. 7b and 3° in Fig. 7d). This is also portrayed in the MERRA-2 O₃ in Fig. S3b, d, with a tongue of large STFR over Mace Head (at 700 hPa, STFR > 40 % and > 30 %, Fig. S4b and d, respectively). The high O₃ associated with the upstream cyclone descends into the mid-troposphere (10°, Fig. 7d) and is associated with high O₃ at Mace Head later in the life cycle of the N1 cyclone.

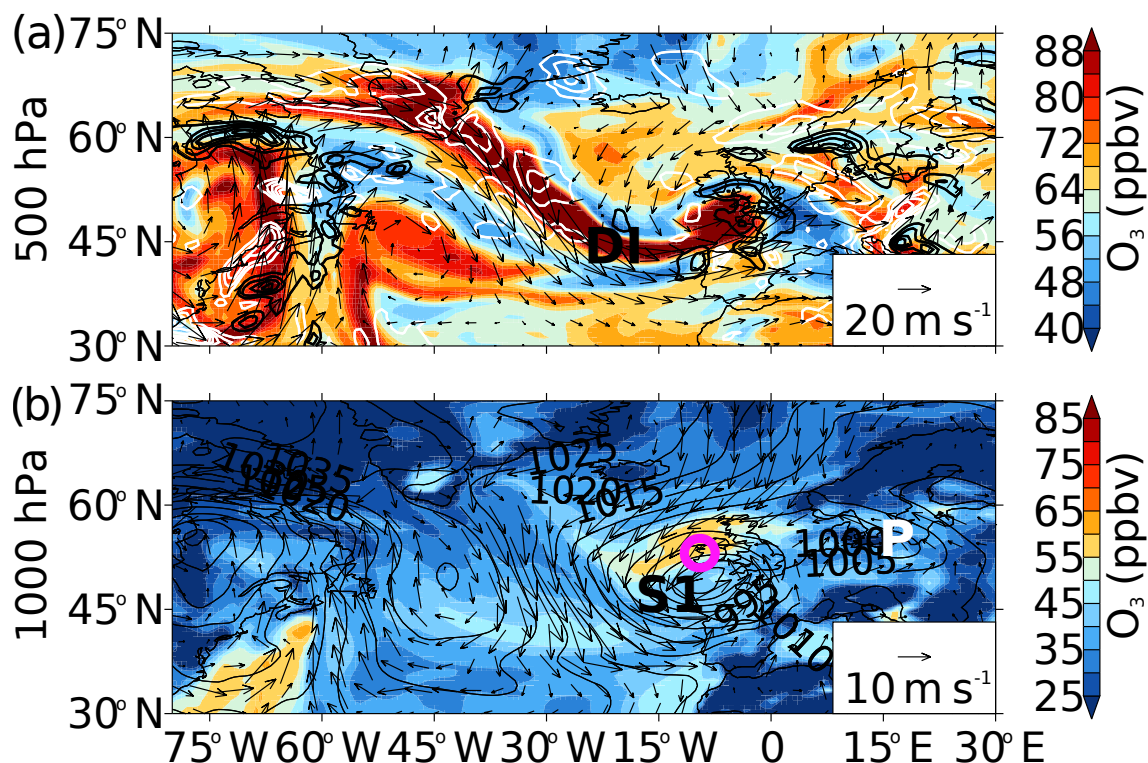


Figure 8. Synoptic conditions and O_3 distribution for the S1 cyclone (**b**; 12°N , 48°W) on 25 April 2012 at 00:00 UTC, at the time of maximum ζ_{850} . Two levels are shown: (**a**) 500 hPa and (**b**) 1000 hPa. Additional features are labeled, including the DI airstream (**a**) and the downstream decaying parent low to the S1 cyclone (white “P”, **b**), and Mace Head is indicated (pink circle, **b**).

The MACC and MERRA-2 representations of the N1 storm (Figs. 6–7 and Figs. S1–S4, respectively), including the stratospheric O_3 mixing ratios, are similar. In the troposphere, MERRA-2 O_3 is expected to be biased low (Sect. 2.2.3), and while the MERRA-2 troposphere O_3 mixing ratios are lower in the N1 cyclone compared to the MACC reanalysis, there is still relatively higher O_3 within the DI airstream reaching the surface (Figs. S1b and d and S3b–d) as seen in Figs. 6 and 7. The higher vertical resolution of MERRA-2 shows the tropopause fold reaches just below 600 hPa (-3° , Fig. S1b) which is 100 hPa closer to the surface than shown in the MACC reanalysis (Fig. 6b). Since both reanalyses show similar O_3 spatial patterns, although not quantitatively the same, we are confident the O_3 reaching Mace Head has stratospheric origin.

Since the N1 cyclone was described in great detail, in the following case studies we will highlight differences compared to the N1 cyclone.

4.2.2 S1 cyclone: synoptic conditions associated with high O_3 at Mace Head

The S1 cyclone originated over New York, USA (43°N , 74°W), on 22 April 2012 and tracked past Mace Head through the South region between 24 April and 26 April

2012. High 75th pc 6-hourly averaged O_3 (> 45 ppbv) was generally observed at Mace Head while the S1 cyclone was in the South region on 24 April at 12:00 UTC to 26 April 2012 at 06:00 UTC (Fig. 2a). The center of the S1 cyclone at the time of maximum vorticity (25 April 2012 at 00:00 UTC), is located almost directly to the south of Mace Head (50°N , 10°W ; Figs. 2a and 8b) having merged with a downstream decaying cyclone (“P”, Fig. 8b). At this time, Mace Head reported median O_3 levels. There is a high-pressure system located directly to the west, centered at approximately 50°N , 45°W , which appears to block transport from upwind North American sources (Figs. 8b and 9d). The atmospheric circulation pattern of high pressure to the west and the S1 cyclone south of Mace Head is very different to the pattern seen during the life cycle of the N1 cyclone, where there were several cyclones in the NA sector and strong westerly winds due to the pressure gradient between the cyclones and the Azores High (Figs. 3 and 4).

The source of elevated surface O_3 (> 55 ppbv) at Mace Head is not associated with descent of air directly from the lower stratosphere within the DI airstream of the S1 cyclone, as seen in the N1 cyclone. Instead there is “residual” high O_3 in the mid- to lower troposphere (50 – 60°N , 20°W – 30°E ; Fig. 8a). This O_3 is referred to as residual O_3 as it descended several days prior to the S1 cyclone passing near

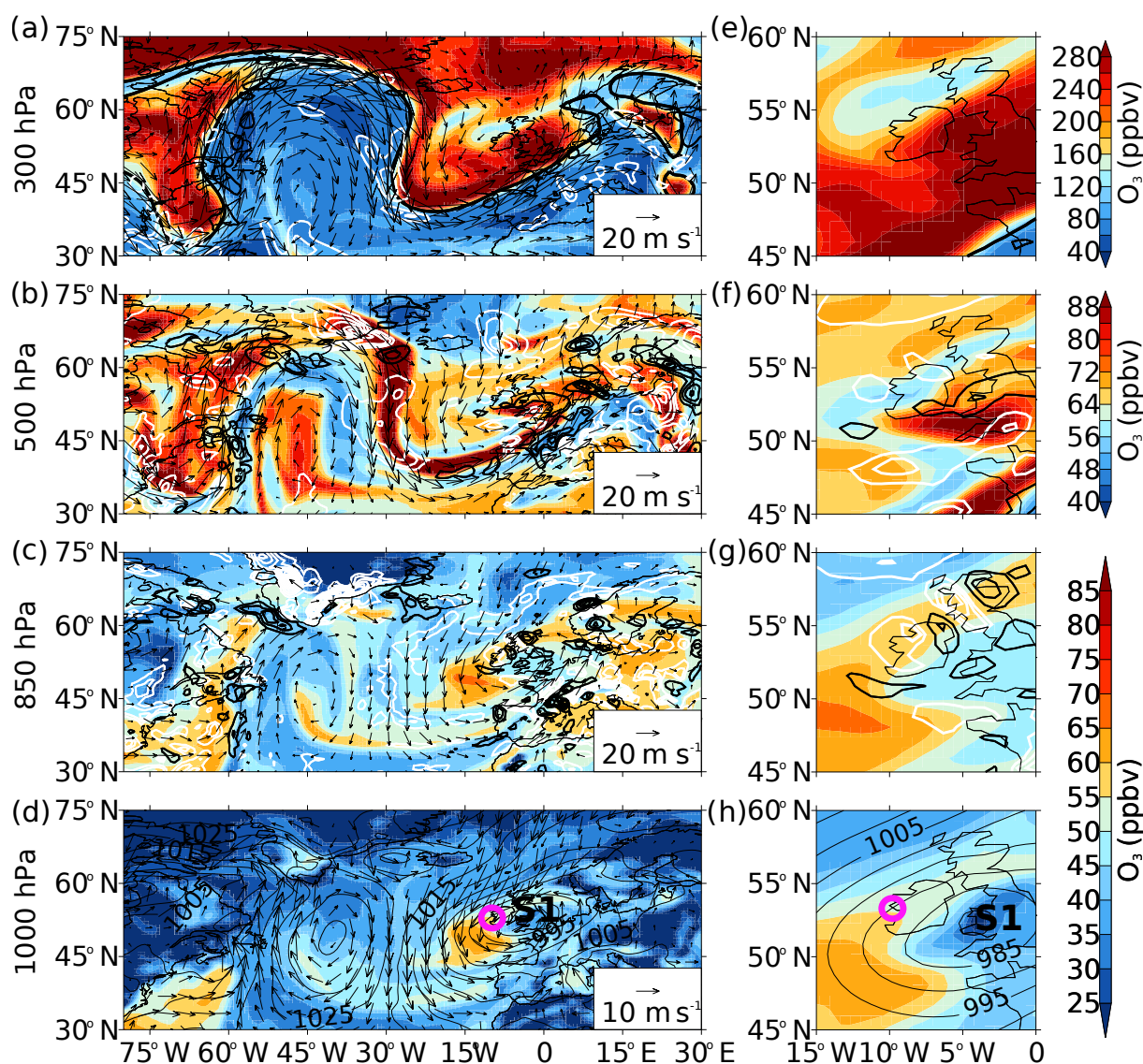


Figure 9. Similar to Fig. 8 (a–d) but also includes an inset over Ireland and the UK (45–60° N, 15° W–0°; e–h, winds not included) for the S1 cyclone (d; 51° N, 5° W) 18 h later, on 25 April 2012 at 18:00 UTC for four pressure levels: (a, e) 300 hPa, (b, f) 500 hPa, (c, g) 850 hPa, and (d, h) 1000 hPa. High O₃ reported at Mace Head.

Mace Head (not shown) within the DI of the downstream cyclone (“P”, Fig. 8b) prior to its decay. This high O₃ appears to become entrained on the north side of the S1 cyclone and advected cyclonically in the lower and mid-troposphere over northern UK and eastern Europe/Scandinavia (Fig. 8).

Eighteen hours after the S1 cyclone reached maximum vorticity (25 April 2012 at 18:00 UTC), high levels of O₃ were reported at Mace Head. The MSLP field is still characterized by a blocking high in the western NA and the S1 cyclone is to the southeast of Ireland (Fig. 9d and h). Above Mace Head, there is descent (closed white contour, Fig. 9c and g) in the region of high O₃ (> 55 ppbv) which can facilitate the transport of O₃ from the mid-troposphere toward the surface. A large ridge has formed over the NA, identi-

fied at 300 hPa by the anticyclonic wind flow aloft as well as the 2 PVU contour (Fig. 9a). On either side of the ridge at 300 hPa, the troughs bring stratospheric air towards lower latitudes than Mace Head (Fig. 9a). This allows for O₃-rich air to be transported towards the surface at lower latitudes as part of the DI airstream within such strong cyclones as the S1 cyclone (between 35 and 45° N, Fig. 9b–d).

To investigate the residual O₃ in more detail, we compare the S1 cyclone airstreams’ vertical and horizontal distribution of O₃ at the time of maximum ζ_{850} (25 April 2012, 00:00 UTC) using the cyclone-centered coordinate system in both the MACC and MERRA-2 reanalyses (Figs. 10 and 11). In Figs. 10a and 11a, the stratospheric O₃ within the DI airstream arrives into the center of the cyclone from the

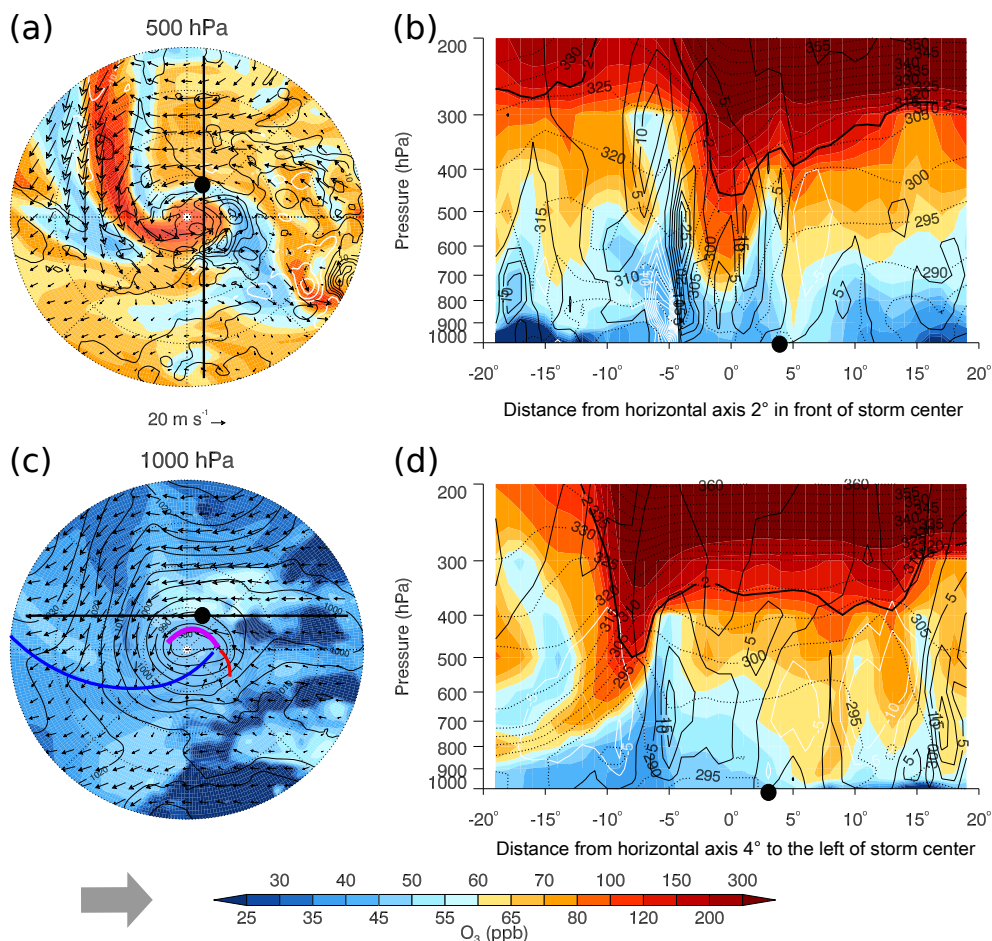


Figure 10. Similar to N1 cyclone Figs. 6 and 7 except for the S1 cyclone on 25 April 2012 at 00:00 UTC (see Fig. 8). The approximate location of the occluded (purple line), warm (red line), and cold (blue line) fronts in (c) are based on the fronts in Fig. S5a and the synoptic analysis chart (not shown). The additional thick vertical lines in (a) and (c) indicate the location of the vertical transects (b) 2° in front of the cyclone center and (d) 4° to the north of cyclone center, respectively. The cross sections have positive axis values to the north (a, b) and to the east (c, d). The approximate location of Mace Head has been indicated by the large black dot. The cyclone has been rotated in order that the direction of cyclone propagation is toward the right, indicated by the grey arrow.

northwest quadrant and is bounded by the WCB ascent to the right of the cyclone's center (black contours with maximum at 5° radius). Most of the northeast quadrant of the S1 cyclone at 500 hPa, shown in Figs. 10a and 11a, is dominated by the residual high levels of O_3 (> 55 ppbv; STFR is $> 20\%$, Fig. S6a) identified above as coming from the downstream decaying cyclone. The MACC and MERRA-2 O_3 mixing ratios throughout the mid-troposphere (above 600 hPa) to lower stratosphere (200 hPa) are comparable during the S1 cyclone (Figs. 10 and 11). The vertical transport of O_3 will be sensitive to the strong gradients of O_3 near the tropopause. The MACC O_3 within the DI airstream can be as much as 75 ppbv higher than the MERRA-2 O_3 , as the MERRA-2 reanalysis O_3 values decrease closer to the dynamical tropopause compared to the MACC O_3 distribution. Both the MACC and MERRA-2 O_3 have good agreement to independent observations in the upper tropo-

sphere/lower stratosphere (UTLS) region (Inness et al., 2013; Wargan et al., 2015, 2017). In the Northern Hemisphere (NH) extratropics, MACC O_3 between 500 and 100 hPa has a bias of -10 – 0% when compared to ozonesondes profiles (Inness et al., 2013) and Wargan et al. (2017) found that the average MERRA-2 O_3 profile over Europe (45 – 60° N, 0 – 60° E) in the spring of 2005 (after the assimilation of MLS and OMI satellite retrievals) captures the vertical structure of the ozonesondes in that region ($r^2 > 0.6$), although biased low (up to -20%) in the UTLS.

The two vertical cross sections in Figs. 10b and d and 11b and d intersect the approximate location of Mace Head and the residual high O_3 in the mid-troposphere that is not associated with the S1 cyclone's DI airstream. The tropopause is depressed to about 500 hPa throughout the DI, shown close to the cyclone center (0°) in Figs. 10b and 11b and behind the S1 cyclone (-8°) in Figs. 10d and 11d. High lev-

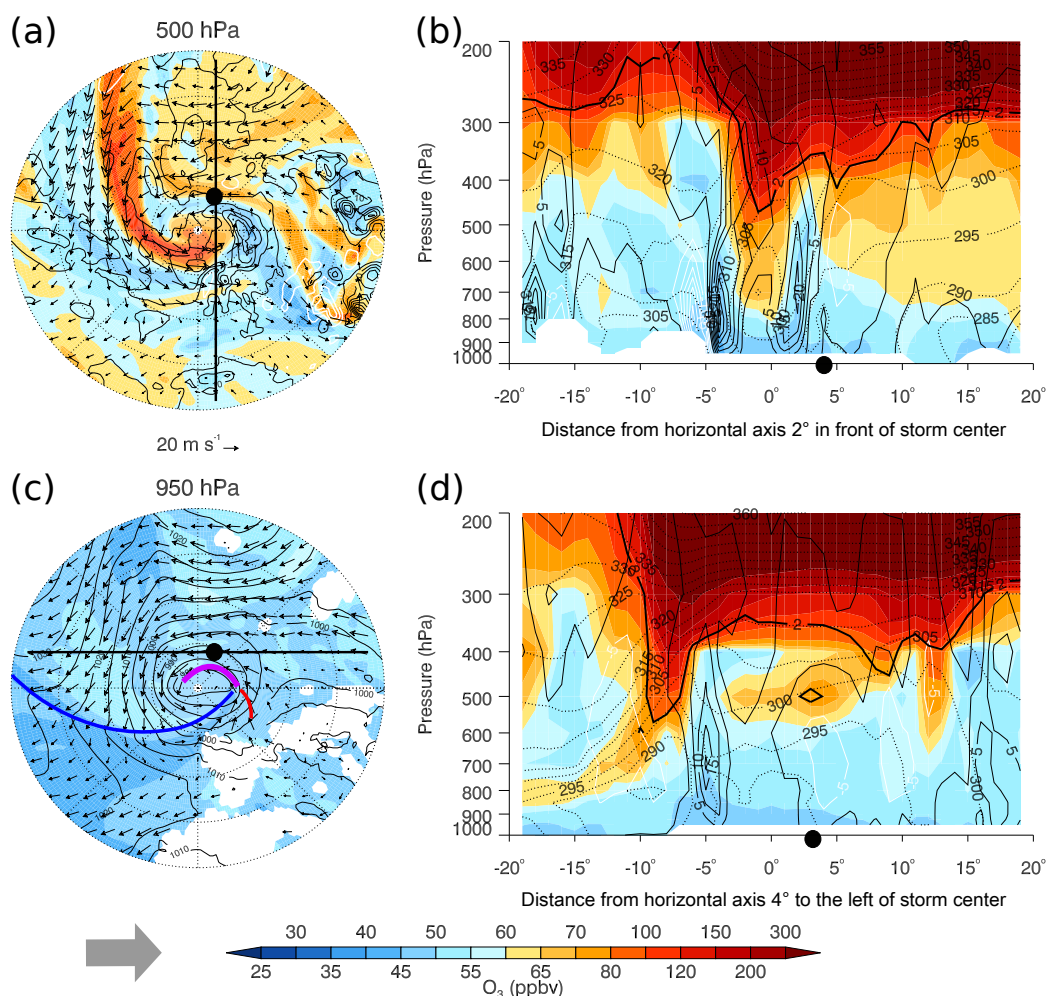


Figure 11. S1 cyclone on 25 April 2012 at 00:00 UTC, similar to Fig. 10 except using MERRA-2 reanalysis data. Note: (c) is 950 hPa instead of 1000 hPa to minimize the missing data plotted. This occurs since the GEOS-5 model masks orography.

els of O₃ (> 55 ppbv) are found down to 800 hPa associated with the DI at the cyclone center (Figs. 10b and 11b) and within the isentropic descent behind S1 between -19 and -5° (Figs. 10d and 11d). There is no injection of stratospheric air into the troposphere occurring near Mace Head from the S1 cyclone, as the tropopause remains almost parallel with the isentropes in the transects between 5 and 15° in Figs. 10b and 11b and between -4 and 15° in Figs. 10d and 11d. The MERRA-2 reanalysis shows the DI of the upstream parent low is directly related to the high O₃ in the mid-troposphere as a small closed 2 PVU contour circle – the dynamical tropopause – is above Mace Head at 500 hPa (Fig. 11d), which is not seen in the coarser MACC reanalysis (Fig. 10d). At 500 hPa, the STFR is > 40 % within the remnant O₃ associated with the decaying cyclone to the east of the S1 center (Fig. S6d). At about 5° in both Fig. 10b and d transects, there is descent (-5 hPa h^{-1} contour) of this residual high O₃ from the mid-troposphere toward the surface over Mace Head in the MACC reanalysis. Despite the nega-

tive vertical velocity above Mace Head in Fig. 11b and d, the simulated MERRA-2 O₃ does not descend fully to the surface; however the simulated O₃ at the surface at Mace Head in both reanalyses is approximately 45 ppbv.

4.2.3 N2 cyclone: synoptic conditions associated with high O₃ at Monte Velho

The N2 cyclone is a strong cyclone which passed north of Monte Velho and advected high O₃ to the observation site. Cyclogenesis of the N2 cyclone occurs off the east coast of Florida on 17 May 2006 at 12:00 UTC (not shown) and then tracks northeastward (Fig. 2b). The synoptic conditions at the time of the N2 cyclone are similar to the N1 cyclone: about a day after cyclogenesis, the N2 cyclone is located just south of Newfoundland and downwind of the N2 cyclone are a series of low-pressure systems across the NA region as well as a strong Azores High stretching over most of the NA (Figs. 12a and S7c). The large pressure gradi-

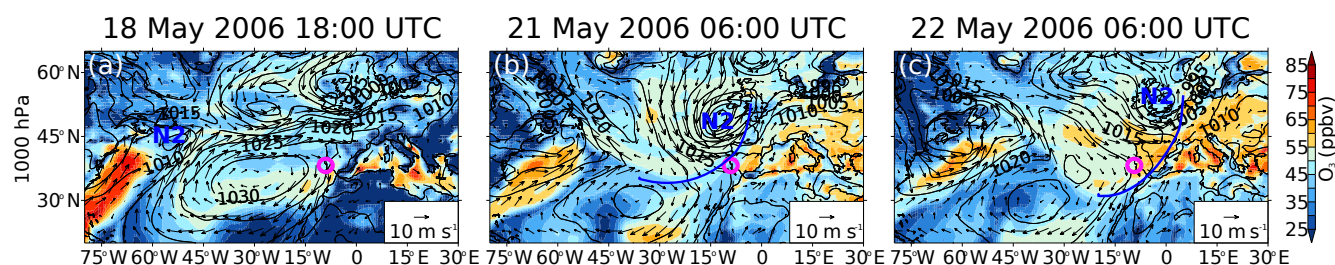


Figure 12. Synoptic conditions and O_3 distribution for the N2 cyclone at 1000 hPa: MACC O_3 (color) and horizontal wind vectors (10 m s^{-1} reference arrow) and MSLP (solid contours, 5 hPa intervals) on (a) 18 May 2006 at 18:00 UTC, (b) 21 May 2006 at 06:00 UTC, and (c) 22 May 2006 at 06:00 UTC. The approximate cold front (b, c; blue line) and Monte Velho (pink open circle) are included.

ent results in strong westerly winds at near 45°N (Fig. 12a) throughout the troposphere (Fig. S7). Similar to the N1 cyclone, stratospheric O_3 descends into the troposphere within the low-pressure systems in the NA ahead of the N2 cyclone (Figs. 12a and S7). Similar to the S1 cyclone, a high-pressure system develops to the west of the N2 cyclone (Fig. 12b and c), supporting upper-level descent behind the N2 cyclone's cold front and negating transport across the NA from North America (Figs. 12b and c, S8, and S9).

As was seen for the N1 cyclone, the N2 cyclone is also associated with low O_3 before high O_3 is observed at the monitoring station due to the passage of a cold front (Fig. 12b and c). Since the N2 cyclone is similar to the N1 and S1 cyclones discussed in Sects. 4.2.1 and 4.2.2, full details for this case can be found in the Supplement (Sect. S2.3).

4.2.4 S2 cyclone: synoptic conditions associated with high O_3 at Monte Velho

The S2 cyclone is a moderate cyclone that formed on 12 March 2007 at 00:00 UTC to the south of a large high-pressure system which extended over the eastern NA and Europe (not shown). On 13 March 2007 at 18:00 UTC, 42 h later, the S2 cyclone reaches maximum vorticity ($\zeta_{850} = 7.3 \times 10^{-5} \text{ s}^{-1}$; 31.3°N , 16.5°W) and is still located to the south of the high-pressure system over the eastern NA (Fig. 13d). At this time, there are additional strong weather systems in the NA region: a deep Icelandic low, a low over Hudson Bay, and a high-pressure system over the western NA. Within the S2 cyclone, there is strong descent within the DI airstream between 300 and 850 hPa (Fig. 13a–c), with maximum descent at 500 hPa ($\omega < -25 \text{ hPa h}^{-1}$, Fig. 13b) nearly as strong as the N1 cyclone (Fig. 6b). High values of O_3 ($> 80 \text{ ppbv}$) descend from upper levels toward the surface within the DI airstream and advect cyclonically around the S2 cyclone and anticyclonically within the high-pressure system at lower levels, behind the low-level cold front (850 and 1000 hPa, Fig. 13c and d). Over the Iberian Peninsula at 850 hPa, there is descent of O_3 -rich air likely associated with the large region of descent throughout the troposphere over

the Mediterranean Sea associated with a downstream cyclone (Fig. 13a–c).

Over the following 4 days, the high O_3 at Monte Velho associated with the S2 cyclone persists while the S2 cyclone tracks southeastward (see Fig. 2b). At upper levels, a closed low detaches from the stratosphere (not shown). In Fig. 14a, the descent within the DI of the S2 cyclone can be identified at 500 hPa; however the S2 cyclone can no longer be identified by a closed low-pressure system over northern Africa in Fig. 14c. The high-pressure system over the eastern NA moves southwestward with the O_3 -rich air which has accumulated within it (Fig. 14c). There is still descent occurring over the Iberian Peninsula in the mid-troposphere, which continues to transport relatively high levels of O_3 to the surface at Monte Velho (Fig. 14a and b).

The cyclone-centered analysis was not performed for the S2 cyclone since (1) the high O_3 at Monte Velho prior to maximum vorticity is associated with a downstream cyclone's DI airstream (as seen in the S1 cyclone) and (2) after the S2 cyclone started to decay the high O_3 is associated with subsidence in the high-pressure system behind the S2 cold front.

5 Discussion

The influence of springtime mid-latitude NA cyclones on O_3 observations at two marine background sites – Mace Head, Ireland, and Monte Velho, Portugal – has been quantified using a frequency analysis test and explored through cyclone case studies. About 50 % of the cyclones which track to the north or close to Mace Head show a relationship with high levels of O_3 ($> 75 \text{ th pc}$) observed at Mace Head, while 53 % of the tracks to the south of Mace Head are associated with low levels of observed O_3 ($< 25 \text{ th pc}$). The N1 case study cyclone to the north of Mace Head illustrates how O_3 -rich air, which originated in the stratosphere, reaches the surface within the DI airstream as the cyclone passes Mace Head. In contrast, at the southern measurement station, Monte Velho, the levels of O_3 are not strongly influenced by the passing cyclones to the north or to the south. If the tracks pass close to Monte Velho, 55 % of tracks are associated with high lev-

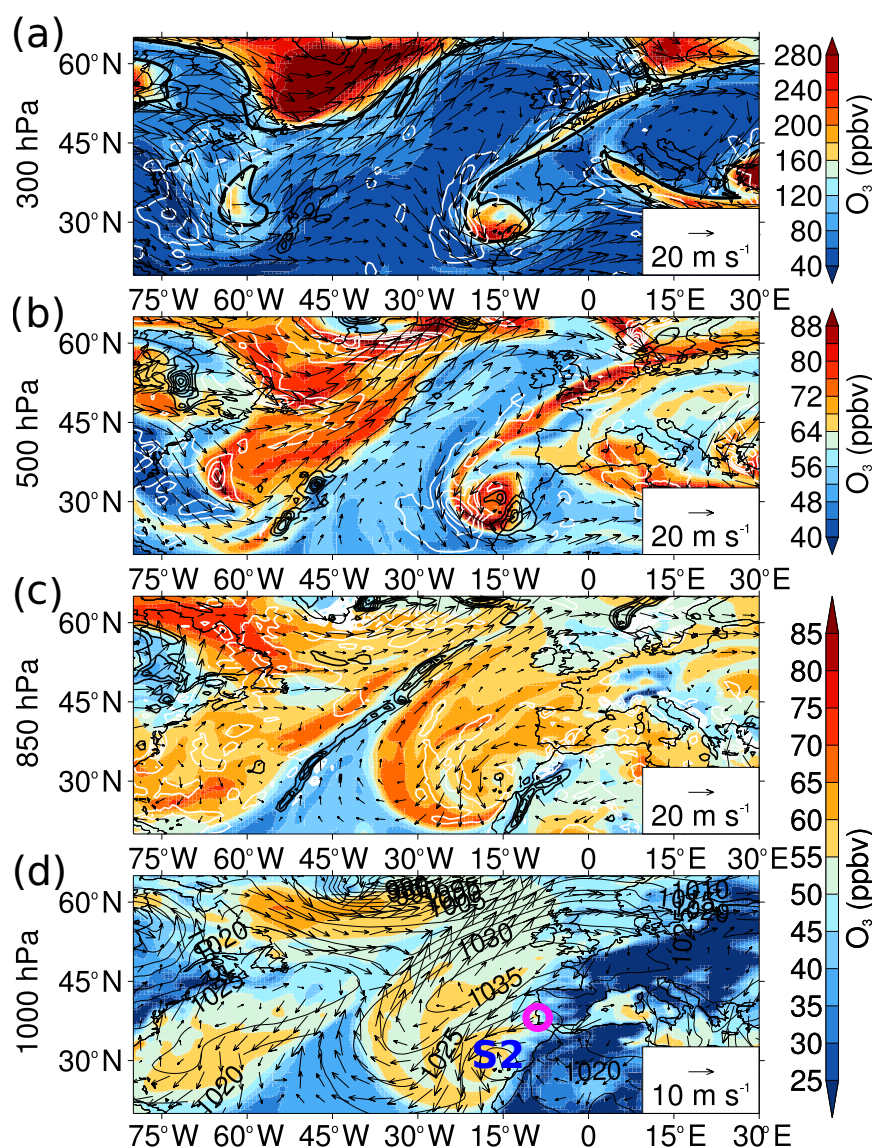


Figure 13. Synoptic conditions for the S2 cyclone (**d**; 31° N, 17° W) on the 13 March 2007 at 18:00 UTC, at the time of maximum ζ_{850} . O_3 (color; note different scales used for different levels) and horizontal winds (note magnitude of reference arrow changes) are shown on four levels: (**a**) 300 hPa, (**b**) 500 hPa, (**c**) 850 hPa, and (**d**) 1000 hPa. In addition, MSLP (**d**; solid contours, 5 hPa intervals), ω (**a**, **b**, and **c**; 5 hPa h⁻¹ contour intervals, black contours for positive values indicating ascent (NB: different interval to previous cyclones) and white contours for descent), and 2 PVU isosurface (**a**; thick contour) are shown. Monte Velho indicated by pink open circle.

els of O_3 . The location of the Monte Velho site relative to the Azores High is the determining meteorological factor for the temporal variability of O_3 at this site since Monte Velho is located south of the NA storm track. Within the Azores High, neighboring the cyclone, there is build-up of high concentrations of O_3 related to the anticyclonic descent within the DI airstream behind the cold front.

In this study, up to 30 % of springtime cyclones are associated with both high O_3 and low O_3 observations at Mace Head or Monte Velho associated with frontal passage relative to the measurement sites. For example, the difference

in modeled MACC O_3 across the N1 cyclone's cold front is > 10 ppbv, with high O_3 behind the cold front and low O_3 ahead of the cold front. Prior to the N1 cyclone reaching maximum intensity, Mace Head is located in the warm sector of the cyclone with moderate levels of O_3 (< 45 ppbv) arriving from the southwest possibly south of 30° N. Previous studies have associated air arriving at Mace Head from the NA with relatively clean maritime air masses (e.g., Jennings et al., 1991; Simmonds and Derwent, 1991; Simmonds et al., 1997; Derwent et al., 1998). Simmonds et al. (1997) noted that O_3 -poor air, around -5 ppbv relative to the back-

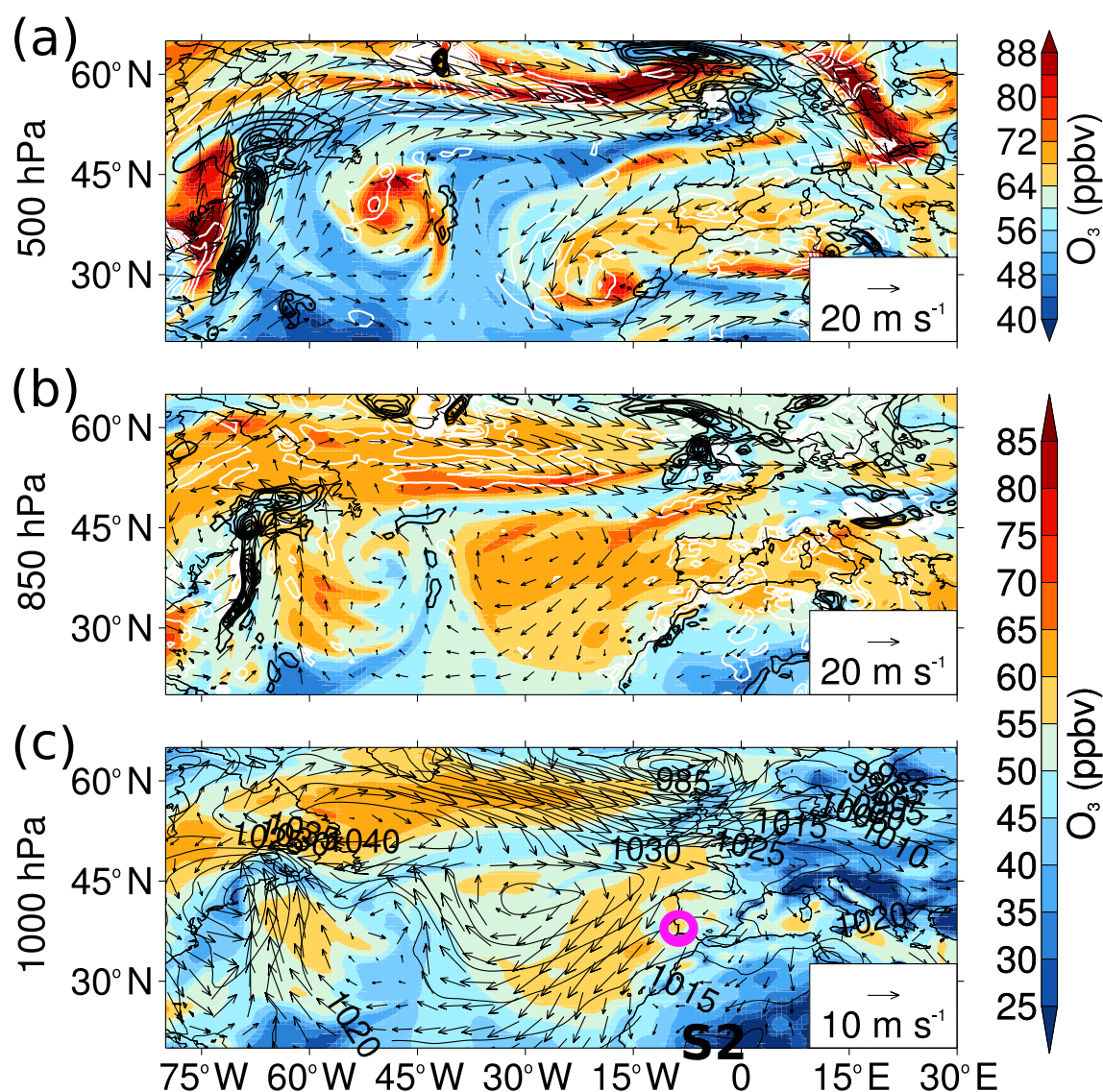


Figure 14. Similar to Fig. 13 except for the S2 cyclone (c; 23° N, 1° W) nearly 4 days later on the 17 March 2007 at 12:00 UTC. High O_3 recorded at Monte Velho. O_3 (color; note different scales used for different levels) and horizontal winds (note magnitude of reference arrow changes) is shown on three levels: (a) 500 hPa, (b) 850 hPa, and (c) 1000 hPa. In addition, MSLP (c; solid contours, 5 hPa intervals) and ω (a and b; 5 hPa h⁻¹ contour intervals, black contours for positive values indicating ascent and white contours for descent) are shown.

ground levels, arrives at Mace Head in April and May from the southwest with subtropical signatures (Simmonds et al., 1997).

It is shown here that high levels of O_3 can be associated with the natural sources of O_3 transported from the stratosphere and can arrive at Mace Head from the west. The stratospheric O_3 -rich air descends toward the lower levels within the DI airstream following direct STT, such as in the N1 intense cyclone and the S2 moderate cyclone. However, the S1 and N2 strong cyclones show that O_3 -rich air in the mid-troposphere can be older, undiluted (“residual”) O_3 -rich air due to STT occurring in a previous downstream cyclone which then becomes entrained in the new cyclone

and descends. In the S1 cyclone near Mace Head, O_3 -rich air from the DI of a downwind cyclone is found in the mid-troposphere (700 to 400 hPa) and is advected cyclonically around the cyclone subsequently descending toward the surface in the DI airstream. As a result, high levels of O_3 (> 55 ppbv) at Mace Head persist for about a day and a half. This feature of older O_3 -rich air descending toward the surface in the DI airstream in combination with subsidence in the anticyclone behind the cyclone was found in the N2 and S2 case studies. Cooper et al. (2004a) also found that O_3 -rich air that had descended in the DI of single cyclone was advected westward within a high-pressure system behind the cyclone and then became entrained within an upstream cy-

clone's WCB. A number of studies suggest it can take many days for O₃-rich air to be diluted into the free troposphere, in which time there are several transport pathways before the air eventually reaches the surface (Johnson and Viezee, 1981; Colbeck and Harrison, 1985; Davies and Schuepbach, 1994; Cooper et al., 2004a). In the case study cyclones examined here, the main pathways are direct entrainment into the cyclone or an upstream cyclone and subsidence within a neighboring anticyclone.

In all four case studies, stratospheric intrusions do occur within the DI airstream regardless of the cyclone intensity. In particular, the moderate S2 cyclone, to the south of Monte Velho, exhibits strong descent from upper levels ($\omega < -25 \text{ hPa h}^{-1}$) comparable to the N1 cyclone and greater than the descent within the N2 and S1 cyclones. Based on stratospheric intrusions targeted by 10 flights over the central USA in the spring and fall of 1978, Johnson and Viezee (1981) conclude that all low-pressure troughs may be associated with STT; however the amount would be proportional to the strength of the trough. Cooper et al. (1998) used ozonesondes to sample pre- and post-frontal vertical profiles at Bermuda and two US sites and found that the mean tropospheric O₃ always increased with height after the cold front had passed, with back trajectories indicating the source was the UTLS to the northwest. The stratospheric "influence" tracer from Ott et al. (2016) was used to represent the fraction of stratospheric air within the case study cyclones; however, in order to diagnose the amount of O₃ from the stratosphere that is irreversibly transferred into the troposphere a CTM or a chemistry climate model (CCM) – such as the GEOSCCM – should be run in order to evaluate the fluxes of O₃ or tagged tracers of O₃, neither of which are archived in the MACC or MERRA-2 reanalyses. In addition, other sources of both natural and man-made pollutants could become entrained into the DI airstream (e.g., Brown-Steiner and Hess, 2011; Lin et al., 2012b; Langford et al., 2017). Biomass burning plumes from as far away as Canada have reached Europe, leading to enhanced CO at Mace Head as the plume passes over (Forster et al., 2001). Within a fire plume, O₃ can be produced associated with increased precursors and this has the potential to enhance European O₃, including at Mace Head. This work is ongoing.

The case study analysis focused on the strongest cyclones associated with high O₃ at Mace Head and Monte Velho such that (1) the cyclone tracks would be exact matches in the MACC and ERA-Interim reanalyses (Knowland et al., 2015) and (2) airstreams would be most evident (Catto et al., 2010). An alternative method to select case study cyclones would be to start by selecting the tracks associated with the highest (or lowest) O₃. This leads to the selection of moderate to weak cyclones (which are generally not located solely in the major storm track pathways and which tend to be shorter-lived; Knowland et al., 2015). While the case study analysis presented here highlights the regional differences in the strongest springtime mid-latitude cyclones associated with

high surface O₃, the relationship between cyclones and surface O₃ likely depends on a number of complex factors, including the cyclone location relative to the measurement station and upstream and downstream pressure systems, cyclone intensity, STT, and long-range transport of trace gases within the free troposphere and the boundary layer.

For the case studies, it is difficult to identify anthropogenic O₃ from surface emission sources arriving at Mace Head or Monte Velho from the west across the NA since anthropogenic O₃ can be an order of magnitude smaller than the levels of stratospheric O₃ from STT. Regardless, Li et al. (2002) show North American major transatlantic pollution events are infrequent, identifying only two such events during the spring of 1997. For pollution from North American emission sources to reach western Europe, the perfect setup of sequential low-pressure systems and a strong Azores–Bermuda high, as seen during the life cycles of the N1 and S2 cyclones, are required to rapidly transport the pollutants in the resultant strong westerly winds (Li et al., 2002; Creilson et al., 2003). Li et al. (2002) found in their study that such events are more likely to occur during positive phases of the North Atlantic Oscillation (NAO; Walker and Bliss, 1932). The month of March 2007, which included the N1 and S2 cyclones, was characterized by a positive NAO index (1.44; Climate Prediction Center, 2014). The synoptic setup during the S1 and N2 cyclones had a blocking high directly to the west, representative of the negative NAO phase; the NAO index was weakly positive (0.47) and negative (−1.28) during the months of April 2012 and March 2006, respectively. The relationship between the NAO, STT, and pollution transport has been explored previously (e.g., Creilson et al., 2003; Sprenger and Wernli, 2003; Pausata et al., 2012); however the direct impact of the cyclones and their associated airstreams on the distributions of trace gases such as O₃ during the different NAO phases will be addressed in a further study.

This analysis has built upon the findings of earlier studies of airstream analysis and chemical composition (e.g., Bethan et al., 1998; Cooper et al., 2001, 2002a, b; Owen et al., 2006; Knowland et al., 2015) to identify consistent pathways in which relatively high levels of O₃ are transported through cyclones in the NA during spring. From a composite of intense springtime cyclones which included the N1 cyclone, Knowland et al. (2015) characterized the main mechanisms which advect O₃ horizontally and vertically within cyclones and hence the extent to which the airstreams can influence O₃ concentrations throughout the troposphere. The case studies corroborate the findings of the composite study that a typical NA cyclone WCB is often associated with relatively lower levels of O₃ while the DI is associated with relatively higher levels of O₃ connecting the stratospheric reservoir with the surface (a type 3 intrusion as defined by Johnson and Viezee, 1981). In addition, the case studies depict elevated O₃ from either a parent low-pressure system (e.g., the N1 cyclone case study) or an upstream decaying cyclone (e.g., the S1 and N2 cyclones) which can become entrained within the cyclone;

this is a strong feature in the NA cyclones as there is elevated O_3 (up to 5 ppbv greater than the background composite) similarly to the north of the NA composite cyclone center, not within the main DI airstream and separated from the O_3 -poor WCB, that wraps cyclonically around the composite cyclone (Knowland et al., 2015).

6 Conclusions

We have shown that passing cyclones have a discernible influence on surface O_3 concentrations; especially when cyclones track north of 53° N, there is a significant probability that the surface O_3 at Mace Head will be high (> 75 th pc). Cyclones are more likely to be associated with both low O_3 (< 25 th pc) and high O_3 if the cyclones track to the south of the observation site or if the cyclones are to the west of the observation site.

The four case studies demonstrate the main drivers associated with cyclones that impact surface O_3 concentrations: (a) the importance of the passage of a cyclone's cold front to influence surface O_3 measurements, (b) the ability of cyclones to bring down high levels of O_3 from the stratosphere, and (c) that accompanying surface high-pressure systems play an important role in the temporal variability of surface O_3 . From these four case studies we have seen that the location of the different fronts at different stages in the cyclone life cycle influences the surface O_3 reported at these two observation sites. Specifically:

- Prior to the passing of the N1 and N2 cold fronts, low-level, O_3 -poor subtropical air within the WCB arrived from the southwest to Mace Head and Monte Velho, respectively. After the cold fronts had passed over the respective observation site, high surface O_3 was reported.
- The N1 cyclone showed a direct connection with stratospheric O_3 -rich air descending within the DI airstream which reaches Mace Head after the cold front passes. Within the S1 and N2 cyclones, there is aged stratospheric O_3 -rich air entrained from previous downwind cyclones. This O_3 -rich air subsequently descends within the strong cyclone and impacts the surface O_3 observations after the cold front has passed over the site. Strong descent of stratospheric O_3 within the DI airstream occurs within moderately strong cyclones outside the main storm track as demonstrated during the lifetime of the moderately strong S2 cyclone to the south of Monte Velho.
- During the life cycles of the S1 and N2 cyclones, there are blocking high-pressure systems in the western NA which cut off any transport of O_3 -rich air from upstream sources. An important descent mechanism was identified during the life cycle of the S2 cyclone, whereby subsidence and accumulation of O_3 -rich air within the

neighboring Azores High-pressure system impacted O_3 measurements at Monte Velho while the S2 cyclone tracked over northwest Africa.

This study has shown that there are diverse cyclone-related dynamical processes which influence the variability of surface O_3 levels at two remote European coastal measurement sites on short timescales of hours to days. In addition, the spatial variability in the low- and high-pressure systems over the North Atlantic can distinctly influence the O_3 values observed at near sea level.

Data availability. This study used publicly available O_3 observations supported by EMEP (<http://actris.nilu.no>). The ERA-Interim reanalysis and the MACC reanalysis are available for download from ECMWF (<http://apps.ecmwf.int/datasets/>). The MERRA-2 reanalysis data are available through the NASA GES DISC online archive (<https://disc.gsfc.nasa.gov/uuu/datasets>, GMAO, 2015a, b). The GEOS-5 STFR data will be provided upon request by Lesley Ott (lesley.e.ott@nasa.gov).

The Supplement related to this article is available online at <https://doi.org/10.5194/acp-17-12421-2017-supplement>.

Competing interests. The authors declare that they have no conflict of interest.

Special issue statement. This article is part of the special issue “Global and regional assessment of intercontinental transport of air pollution: results from HTAP, AQMEII and MICS”. It does not belong to a conference.

Acknowledgements. This research was funded in part by the University of Edinburgh through the Principal's Career Development Scholarship, the Edinburgh Global Research Scholarship Award, and by the School of Geosciences, University of Edinburgh. K. Emma Knowland's analysis of MERRA-2 was supported through GMAO core funding administered by NASA's Modeling, Analysis, and Prediction Program. Implementation of STFR in GEOS-5 was funded by NASA's Atmospheric Composition Campaign Data Analysis and Modeling program. MERRA-2 data were provided by the GMAO at NASA GSFC through the NASA GES DISC online archive. The authors would like to thank Diamantino Henriques and Lourdes Bugalho from Instituto Português do Mar e da Atmosfera (IPMA) and Paulo Beliche from Comissão de Coordenação e Desenvolvimento Regional (CCDR) do Alentejo for providing specific details of the instruments used at the Monte Velho, Portugal, monitoring station.

Edited by: Stefano Galmarini

Reviewed by: three anonymous referees

References

- Akimoto, H.: Global air quality and pollution, *Science*, 302, 1716–1719, <https://doi.org/10.1126/science.1092666>, 2003.
- Ayers, G. P., Penkett, S. A., Gillett, R. W., Bandy, B., Galbally, I. E., Meyer, C. P., Elsworth, C. M., Bentley, S. T., and Forgan, B. W.: Evidence for photochemical control of ozone concentrations in unpolluted marine air, *Nature*, 360, 446–449, <https://doi.org/10.1038/360446a0>, 1992.
- Bader, M., Forbes, G., Grant, J., Lilley, R., and Waters, A.: *Images of Weather Forecasting: a Practical Guide for Interpreting Satellite and Radar Imagery*, Cambridge University Press, New York, USA, 499 pp., 1995.
- Barnes, E. A. and Fiore, A. M.: Surface ozone variability and the jet position: implications for projecting future air quality, *Geophys. Res. Lett.*, 40, 2839–2844, <https://doi.org/10.1002/grl.50411>, 2013.
- Bengtsson, L., Hodges, K. I., and Roeckner, E.: Storm tracks and climate change, *J. Climate*, 19, 3518–3543, <https://doi.org/10.1175/JCLI3815.1>, 2006.
- Bengtsson, L., Hodges, K. I., Esch, M., Keenlyside, N., Kornbluh, L., Luo, J.-J., and Yamagata, T.: How may tropical cyclones change in a warmer climate?, *Tellus A*, 59, 539–561, <https://doi.org/10.1111/j.1600-0870.2007.00251.x>, 2007.
- Bengtsson, L., Hodges, K. I., and Keenlyside, N.: Will extratropical storms intensify in a warmer climate?, *J. Climate*, 22, 2276–2301, <https://doi.org/10.1175/2008JCLI2678.1>, 2009.
- Bethan, S., Vaughan, G., Gerbig, C., Volz-Thomas, A., Richer, H., and Tiddeman, D. A.: Chemical air mass differences near fronts, *J. Geophys. Res.*, 103, 13413–13434, <https://doi.org/10.1029/98JD00535>, 1998.
- Bosilovich, M., Akella, S., Coy, L., Cullather, R., Draper, C., Gelaro, R., Kovach, R., Liu, Q., Molod, A., Norris, P., Wargan, K., Chao, W., Reichle, R., Takacs, L., Vikhliav, Y., Bloom, S., Collow, A., Firth, S., Labow, G., Partyka, G., Pawsen, S., Reale, O., Schubert, S., and Suarez, M.: MERRA-2: initial evaluation of the climate, Tech. Rep. Ser. on Global Modeling and Data Assimilation, 43, NASA/TM–2015–104606, Greenbelt, MD, USA, 139 pp., 2015.
- Bosilovich, M. G., Luccchesi, R., and Suarez, M.: MERRA-2: File specification GMAO Office Note No. 9 (Version 1.1), available at: <http://gmao.gsfc.nasa.gov/pubs/docs/Bosilovich785.pdf> (last access: 20 June 2016), 2016.
- Brown-Steiner, B. and Hess, P.: Asian influence on surface ozone in the United States: A comparison of chemistry, seasonality, and transport mechanisms, *J. Geophys. Res.*, 116, D17309, <https://doi.org/10.1029/2011JD015846>, 2011.
- Browning, K.: The dry intrusion perspective of extra-tropical cyclone development, *Meteorol. Appl.*, 4, 317–324, 1997.
- Büker, M. L., Hitchman, M. H., Tripoli, G. J., Pierce, R. B., Browell, E. V., and Avery, M. A.: Resolution dependence of cross-tropopause ozone transport over east Asia, *J. Geophys. Res.*, 110, D03107, <https://doi.org/10.1029/2004JD004739>, 2005.
- Carlson, T.: Airflow through midlatitude cyclones and the comma cloud pattern, *Mon. Weather Rev.*, 108, 1498–1509, [https://doi.org/10.1175/1520-0493\(1980\)108<1498:ATMCAT>2.0.CO;2](https://doi.org/10.1175/1520-0493(1980)108<1498:ATMCAT>2.0.CO;2), 1980.
- Catto, J., Shaffrey, L., and Hodges, K.: Can climate models capture the structure of extratropical cyclones?, *J. Climate*, 23, 1621–1635, <https://doi.org/10.1175/2009JCLI3318.1>, 2010.
- Clarke, L. C. and Renard, R. J.: The US Navy numerical frontal analysis scheme: further development and a limited evaluation, *J. Appl. Meteorol.*, 5, 764–777, [https://doi.org/10.1175/1520-0450\(1966\)005<0764:TUSNNF>2.0.CO;2](https://doi.org/10.1175/1520-0450(1966)005<0764:TUSNNF>2.0.CO;2), 1966.
- Climate Prediction Center: North Atlantic Oscillation (NAO) monthly mean index since January 1950, <http://www.cpc.ncep.noaa.gov/products/precip/CWlink/pna/nao.shtml>, last access: 19 September 2014.
- Colbeck, I. and Harrison, R. M.: The frequency and causes of elevated concentrations of ozone at ground level at rural sites in north-west England, *Atmos. Environ.*, 19, 1577–1587, [https://doi.org/10.1016/0004-6981\(85\)90210-0](https://doi.org/10.1016/0004-6981(85)90210-0), 1985.
- Cooper, O., Moody, J., Parrish, D., Trainer, M., Ryerson, T., Holloway, J., Hubler, G., Fehsenfeld, F., Oltmans, S., and Evans, M.: Trace gas signatures of the airstreams within North Atlantic cyclones: case studies from the North Atlantic Regional Experiment (NARE '97) aircraft intensive, 2nd AGU Chapman Conference on Water Vapor in the Climate System, Potomac, Maryland, 12–15 October 1999, *J. Geophys. Res.*, 106, 5437–5456, <https://doi.org/10.1029/2000JD900574>, 2001.
- Cooper, O. R., Moody, J. L., Davenport, J. C., Oltmans, S. J., Johnson, B. J., Chen, X., Shepson, P. B., and Merrill, J. T.: Influence of springtime weather systems on vertical ozone distributions over three North American sites, *J. Geophys. Res.*, 103, 22001–22013, <https://doi.org/10.1029/98JD01801>, 1998.
- Cooper, O. R., Moody, J. L., Parrish, D. D., Trainer, M., Holloway, J. S., Höbner, G., Fehsenfeld, F. C., and Stohl, A.: Trace gas composition of midlatitude cyclones over the western North Atlantic Ocean: a seasonal comparison of O₃ and CO, *J. Geophys. Res.*, 107, ACH2-1–ACH2-12, <https://doi.org/10.1029/2001JD000902>, 2002a.
- Cooper, O. R., Moody, J. L., Parrish, D. D., Trainer, M., Ryerson, T. B., Holloway, J. S., Höbner, G., Fehsenfeld, F. C., and Evans, M. J.: Trace gas composition of midlatitude cyclones over the western North Atlantic Ocean: a conceptual model, *J. Geophys. Res.*, 107, ACH1-1–ACH1-13, <https://doi.org/10.1029/2001JD000901>, 2002b.
- Cooper, O., Forster, C., Parrish, D., Dunlea, E., Höbner, G., Fehsenfeld, F., Holloway, J., Oltmans, S., Johnson, B., Wimmers, A., and Horowitz, L.: On the life cycle of a stratospheric intrusion and its dispersion into polluted warm conveyor belts, *J. Geophys. Res.*, 109, D23S09, <https://doi.org/10.1029/2003JD004006>, 2004a.
- Cooper, O. R., Forster, C., Parrish, D., Trainer, M., Dunlea, E., Ryerson, T., Höbner, G., Fehsenfeld, F., Nicks, D., Holloway, J., de Gouw, J., Warneke, C., Roberts, J. M., Flocke, F., and Moody, J.: A case study of transpacific warm conveyor belt transport: influence of merging airstreams on trace gas import to North America, *J. Geophys. Res.*, 109, D23S08, <https://doi.org/10.1029/2003JD003624>, 2004b.
- Creilson, J. K., Fishman, J., and Wozniak, A. E.: Intercontinental transport of tropospheric ozone: a study of its seasonal variability across the North Atlantic utilizing tropospheric ozone residuals and its relationship to the North Atlantic Oscillation, *Atmos. Chem. Phys.*, 3, 2053–2066, <https://doi.org/10.5194/acp-3-2053-2003>, 2003.
- Dacre, H., Hawcroft, M., Stringer, M., and Hodges, K.: An extratropical cyclone atlas: a tool for illustrating cyclone structure and

- evolution characteristics, *B. Am. Meteorol. Soc.*, 93, 1497–1502, 2012.
- Danielsen, E. F.: Stratospheric–tropospheric exchange based on radioactivity, ozone and potential vorticity, *J. Atmos. Sci.*, 25, 502–518, 1968.
- Danielsen, E. F.: Stratospheric source for unexpectedly large values of ozone measured over the Pacific Ocean during Gametag, August 1977, *J. Geophys. Res.*, 85, 401–412, <https://doi.org/10.1029/JC085iC01p00401>, 1980.
- Danielsen, E. F. and Mohnen, V. A.: Project dustorm report: ozone transport, in situ measurements, and meteorological analyses of tropopause folding, *J. Geophys. Res.*, 82, 5867–5877, <https://doi.org/10.1029/JC082i037p05867>, 1977.
- Davies, T. and Schuepbach, E.: Episodes of high ozone concentrations at the Earth's surface resulting from transport down from the upper troposphere/lower stratosphere: a review and case studies, *Atmos. Environ.*, 28, 53–68, [https://doi.org/10.1016/1352-2310\(94\)90022-1](https://doi.org/10.1016/1352-2310(94)90022-1), 1994.
- Dee, D. P., Uppala, S. M., Simmons, A. J., Berrisford, P., Poli, P., Kobayashi, S., Andrae, U., Balmaseda, M. A., Balsamo, G., Bauer, P., Bechtold, P., Beljaars, A. C. M., van de Berg, L., Bidlot, J., Bormann, N., Delsol, C., Dragani, R., Fuentes, M., Geer, A. J., Haimberger, L., Healy, S. B., Hersbach, H., Hólm, E. V., Isaksen, I., Kållberg, P., Köhler, M., Matricardi, M., McNally, A. P., Monge-Sanz, B. M., Morcrette, J.-J., Park, B.-K., Peubey, C., de Rosnay, P., Tavolato, C., Thépaut, J.-N., and Vitart, F.: The ERA-Interim reanalysis: configuration and performance of the data assimilation system, *Q. J. Roy. Meteor. Soc.*, 137, 553–597, <https://doi.org/10.1002/qj.828>, 2011.
- Dentener, F., Keating, T., and Akimoto, H. E.: Hemispheric Transport of Air Pollution 2010, Part A: Ozone and Particulate Matter, Air Pollution Studies No. 17, United Nations, New York, USA and Geneva, Switzerland, 2010.
- Derber, J., Purser, R., Wu, W.-S., Treadon, R., Poncena, M., Parrish, D., and Kleist, D.: Flow-dependent Jb in a global grid-point 3-DVAR, in: *Proc. ECMWF Annual Seminar on Recent Developments in Data Assimilation for Atmosphere and Ocean*, 125–134, ECMWF, Reading, UK, 2003.
- Derwent, R., Eggleton, A., Williams, M., and Bell, C.: Elevated ozone levels from natural sources, *Atmos. Environ.*, 12, 2173–2177, [https://doi.org/10.1016/0004-6981\(78\)90172-5](https://doi.org/10.1016/0004-6981(78)90172-5), 1978.
- Derwent, R., Simmonds, P., O'Doherty, S., and Ryall, D.: The impact of the Montreal Protocol on halocarbon concentrations in Northern Hemisphere baseline and European air masses at Mace Head, Ireland over a ten year period from 1987–1996, *Atmos. Environ.*, 32, 3689–3702, [https://doi.org/10.1016/S1352-2310\(98\)00092-2](https://doi.org/10.1016/S1352-2310(98)00092-2), 1998.
- Derwent, R., Stevenson, D., Collins, W., and Johnson, C.: Intercontinental transport and the origins of the ozone observed at surface sites in Europe, *Atmos. Environ.*, 38, 1891–1901, <https://doi.org/10.1016/j.atmosenv.2004.01.008>, 2004.
- Derwent, R. G., Stevenson, D., Doherty, R., Collins, W. J., and Sanderson, M. G.: How is surface ozone in Europe linked to Asian and North American NO_x emissions?, *Atmos. Environ.*, 42, 7412–7422, <https://doi.org/10.1016/j.atmosenv.2008.06.037>, 2008.
- Derwent, R. G., Parrish, D. D., Galbally, I. E., Stevenson, D. S., Doherty, R. M., Young, P. J., and Shallcross, D. E.: Interhemispheric differences in seasonal cycles of tropospheric ozone in the marine boundary layer: observation-model comparisons, *J. Geophys. Res.*, 121, 11075–11085, <https://doi.org/10.1002/2016JD024836>, 2016.
- Eisele, H., Scheel, H. E., Sladkovic, R., and Trickl, T.: High-resolution lidar measurements of stratosphere–troposphere exchange, *J. Atmos. Sci.*, 56, 319–330, [https://doi.org/10.1175/1520-0469\(1999\)056<0319:HRLMOS>2.0.CO;2](https://doi.org/10.1175/1520-0469(1999)056<0319:HRLMOS>2.0.CO;2), 1999.
- Flemming, J., Inness, A., Flentje, H., Huijnen, V., Moinat, P., Schultz, M., and Stein, O.: Coupling global chemistry transport models to ECMWF's integrated forecast system, *Geosci. Model Dev.*, 2, 253–265, <https://doi.org/10.5194/gmd-2-253-2009>, 2009.
- Forster, C., Wandler, U., Wotawa, G., James, P., Mattis, I., Althausen, D., Simmonds, P., O'Doherty, S., Jennings, S. G., Kleefeld, C., Schneider, J., Trickl, T., Kreipl, S., Jäger, H., and Stohl, A.: Transport of boreal forest fire emissions from Canada to Europe, *J. Geophys. Res.*, 106, 22 887–22 906, <https://doi.org/10.1029/2001JD001115>, 2001.
- Gelaro, R., McCarty, W., Suárez, M. J., Todling, R., Molod, A., Takacs, L., Randles, C., Darmenov, A., Bosilovich, M. G., Reichle, R., Wargan, K., Coy, L., Cullather, R., Draper, C., Akella, S., Buchard, V., Conaty, A., da Silva, A., Gu, W., Kim, G.-K., Koster, R., Lucchesi, R., Merkova, D., Nielsen, J. E., Partyka, G., Pawson, S., Putman, W., Rienecker, M., Schubert, S. D., Sienkiewicz, M., and Zhao, B.: The Modern-Era Retrospective Analysis for Research and Applications, Version 2 (MERRA-2), *J. Climate*, 30, 5419–5454, <https://doi.org/10.1175/JCLI-D-16-0758.1>, 2017.
- GMAO: MERRA-2 tavg1_2d_slv_Nx: 2d, 1-Hourly, Time-Averaged, Single-Level, Assimilation, Single-Level Diagnostics V5.12.4, Goddard Space Flight Center Distributed Active Archive Center (GSFC DAAC), Greenbelt, MD, USA, <https://doi.org/10.5067/VJAFPL1CSIV>, 2015a.
- GMAO: MERRA-2 inst3_3d_asm_Np: 3d, 3-Hourly, Instantaneous, Pressure-Level, Assimilation, Assimilated Meteorological Fields V5.12.4, Goddard Space Flight Center Distributed Active Archive Center (GSFC DAAC), Greenbelt, MD, USA, <https://doi.org/10.5067/QBZ6MG944HW0>, 2015b.
- Hannan, J. R., Fuelberg, H. E., Crawford, J. H., Sachse, G. W., and Blake, D. R.: Role of wave cyclones in transporting boundary layer air to the free troposphere during the spring 2001 NASA/TRACE-P experiment, *J. Geophys. Res.*, 108, 8785, <https://doi.org/10.1029/2002JD003105>, 2003.
- Harrold, T. W.: Mechanisms influencing distribution of precipitation within baroclinic disturbances, *Q. J. Roy. Meteor. Soc.*, 99, 232–251, <https://doi.org/10.1002/qj.49709942003>, 1973.
- Hegarty, J., Mao, H., and Talbot, R.: Synoptic controls on summertime surface ozone in the northeastern United States, *J. Geophys. Res.*, 112, D14306, <https://doi.org/10.1029/2006JD008170>, 2007.
- Hodges, K. I.: A general-method for tracking analysis and its application to meteorological data, *Mon. Weather Rev.*, 122, 2573–2586, [https://doi.org/10.1175/1520-0493\(1994\)122<2573:AGMFTA>2.0.CO;2](https://doi.org/10.1175/1520-0493(1994)122<2573:AGMFTA>2.0.CO;2), 1994.
- Hodges, K. I.: Feature tracking on the unit-sphere, *Mon. Weather Rev.*, 123, 3458–3465, [https://doi.org/10.1175/1520-0493\(1995\)123<3458:FTOTUS>2.0.CO;2](https://doi.org/10.1175/1520-0493(1995)123<3458:FTOTUS>2.0.CO;2), 1995.

- Hodges, K. I.: Adaptive constraints for feature tracking, *Mon. Weather Rev.* 127, 1362–1373, [https://doi.org/10.1175/1520-0493\(1999\)127<1362:ACFFT>2.0.CO;2](https://doi.org/10.1175/1520-0493(1999)127<1362:ACFFT>2.0.CO;2), 1999.
- Hodges, K. I., Lee, R. W., and Bengtsson, L.: A comparison of extratropical cyclones in recent reanalyses ERA-interim, NASA MERRA, NCEP CFSR, and JRA-25, *J. Climate*, 24, 4888–4906, <https://doi.org/10.1175/2011JCLI4097.1>, 2011.
- Holton, J. R., Haynes, P. H., McIntyre, M. E., Douglass, A. R., Rood, R. B., and Pfister, L.: Stratosphere–troposphere exchange, *Rev. Geophys.*, 33, 403–439, <https://doi.org/10.1029/95RG02097>, 1995.
- Hoskins, B., and Hodges, K.: New perspectives on the Northern Hemisphere winter storm tracks, *J. Atmos. Sci.*, 59, 1041–1061, [https://doi.org/10.1175/1520-0469\(2002\)059<1041:NPOTNH>2.0.CO;2](https://doi.org/10.1175/1520-0469(2002)059<1041:NPOTNH>2.0.CO;2), 2002.
- Inness, A., Baier, F., Benedetti, A., Bouarar, I., Chabrilat, S., Clark, H., Clerbaux, C., Coheur, P., Engelen, R. J., Errera, Q., Flemming, J., George, M., Granier, C., Hadji-Lazaro, J., Huijnen, V., Hurtmans, D., Jones, L., Kaiser, J. W., Kapsomenakis, J., Lefever, K., Leitão, J., Razinger, M., Richter, A., Schultz, M. G., Simmons, A. J., Suttie, M., Stein, O., Thépaut, J.-N., Thouret, V., Vrekoussis, M., Zerefos, C., and the MACC team: The MACC reanalysis: an 8 yr data set of atmospheric composition, *Atmos. Chem. Phys.*, 13, 4073–4109, <https://doi.org/10.5194/acp-13-4073-2013>, 2013.
- Itoh, H. and Narazaki, Y.: Fast descent routes from within or near the stratosphere to the surface at Fukuoka, Japan, studied using ^7Be measurements and trajectory calculations, *Atmos. Chem. Phys.*, 16, 6241–6261, <https://doi.org/10.5194/acp-16-6241-2016>, 2016.
- Jennings, S., O'Dowd, C., O'Connor, T., and McGovern, F.: Physical characteristics of the ambient aerosol at Mace Head, *Atmos. Environ.* 25, 557–562, [https://doi.org/10.1016/0960-1686\(91\)90052-9](https://doi.org/10.1016/0960-1686(91)90052-9), 1991.
- Johnson, W. B. and Viezee, W.: Stratospheric ozone in the lower troposphere – I. Presentation and interpretation of aircraft measurements, *Atmos. Environ.* 15, 1309–1323, [https://doi.org/10.1016/0004-6981\(81\)90325-5](https://doi.org/10.1016/0004-6981(81)90325-5), 1981.
- Kinnison, D. E., Brasseur, G. P., Walters, S., Garcia, R. R., Marsh, D. R., Sassi, F., Harvey, V. L., Randall, C. E., Emmons, L., Lamarque, J. F., Hess, P., Orlando, J. J., Tie, X. X., Randel, W., Pan, L. L., Gettelman, A., Granier, C., Diehl, T., Niemeier, U., and Simmons, A. J.: Sensitivity of chemical tracers to meteorological parameters in the MOZART-3 chemical transport model, *J. Geophys. Res.*, 112, D20302, <https://doi.org/10.1029/2006JD007879>, 2007.
- Knowland, K. E.: Linking mid-latitude storms, atmospheric composition and climate variability, PhD thesis, School of Geosciences, University of Edinburgh, Edinburgh, Scotland, UK, 2016.
- Knowland, K. E., Doherty, R. M., and Hodges, K. I.: The effects of springtime mid-latitude storms on trace gas composition determined from the MACC reanalysis, *Atmos. Chem. Phys.*, 15, 3605–3628, <https://doi.org/10.5194/acp-15-3605-2015>, 2015.
- Krzyzanowski, M. and Cohen, A.: Update of WHO air quality guidelines, *Air Qual. Atmos. Health*, 1, 7–13, <https://doi.org/10.1007/s11869-008-0008-9>, 2008.
- Langford, A., Senff, C., II, R. A., Brioude, J., Cooper, O., Holloway, J., Lin, M., Marchbanks, R., Pierce, R., Sandberg, S., Weickmann, A., and Williams, E.: An overview of the 2013 Las Vegas Ozone Study (LVOS): impact of stratospheric intrusions and long-range transport on surface air quality, *Atmos. Environ.* 109, 305–322, <https://doi.org/10.1016/j.atmosenv.2014.08.040>, 2015.
- Langford, A. O., Aikin, K. C., Eubank, C. S., and Williams, E. J.: Stratospheric contribution to high surface ozone in Colorado during springtime, *Geophys. Res. Lett.*, 36, L12801, <https://doi.org/10.1029/2009GL038367>, 2009.
- Langford, A. O., Brioude, J., Cooper, O. R., Senff, C. J., Alvarez, R. J., Hardesty, R. M., Johnson, B. J., and Oltmans, S. J.: Stratospheric influence on surface ozone in the Los Angeles area during late spring and early summer of 2010, *J. Geophys. Res.*, 117, D00V06, <https://doi.org/10.1029/2011JD016766>, 2012.
- Langford, A. O., Alvarez, R. J., Brioude, J., Fine, R., Gustin, M. S., Lin, M. Y., Marchbanks, R. D., Pierce, R. B., Sandberg, S. P., Senff, C. J., Weickmann, A. M., and Williams, E. J.: Entrainment of stratospheric air and Asian pollution by the convective boundary layer in the southwestern US, *J. Geophys. Res.*, 122, 1312–1337, <https://doi.org/10.1002/2016JD025987>, 2017.
- Lefohn, A. S., Wernli, H., Shadwick, D., Oltmans, S. J., and Shapiro, M.: Quantifying the importance of stratospheric–tropospheric transport on surface ozone concentrations at high- and low-elevation monitoring sites in the United States, *Atmos. Environ.* 62, 646–656, <https://doi.org/10.1016/j.atmosenv.2012.09.004>, 2012.
- Leibensperger, E. M., Mickley, L. J., and Jacob, D. J.: Sensitivity of US air quality to mid-latitude cyclone frequency and implications of 1980–2006 climate change, *Atmos. Chem. Phys.*, 8, 7075–7086, <https://doi.org/10.5194/acp-8-7075-2008>, 2008.
- Levelt, P. F., van den Oord, G. H. J., Dobber, M. R., Malkki, A., Visser, H., de Vries, J., Stammes, P., Lundell, J. O. V., and Saari, H.: The ozone monitoring instrument, *IEEE T. Geosci. Remote* 44, 1093–1101, <https://doi.org/10.1109/TGRS.2006.872333>, 2006.
- Li, Q., Jacob, D., Bey, I., Palmer, P., Duncan, B., Field, B., Martin, R., Fiore, A., Yantosca, R., Parrish, D., Simmonds, P., and Oltmans, S.: Transatlantic transport of pollution and its effects on surface ozone in Europe and North America, *J. Geophys. Res.*, 107, 4166, <https://doi.org/10.1029/2001JD001422>, 2002.
- Lin, M., Fiore, A. M., Cooper, O. R., Horowitz, L. W., Langford, A. O., Levy, H., Johnson, B. J., Naik, V., Oltmans, S. J., and Senff, C. J.: Springtime high surface ozone events over the western United States: quantifying the role of stratospheric intrusions, *J. Geophys. Res.*, 117, D00V22, <https://doi.org/10.1029/2012JD018151>, 2012a.
- Lin, M., Fiore, A. M., Horowitz, L. W., Cooper, O. R., Naik, V., Holloway, J., Johnson, B. J., Middlebrook, A. M., Oltmans, S. J., Pollack, I. B., Ryerson, T. B., Warner, J. X., Wiedinmyer, C., Wilson, J., and Wyman, B.: Transport of Asian ozone pollution into surface air over the western United States in spring, *J. Geophys. Res.*, 117, D00V07, <https://doi.org/10.1029/2011JD016961>, 2012b.
- Lin, M., Horowitz, L. W., Oltmans, S. J., Fiore, A. M., and Fan, S.: Tropospheric ozone trends at Mauna Loa Observatory tied to decadal climate variability, *Nat. Geosci.*, 7, 136–143, 2014.
- Lin, M., Fiore, A. M., Horowitz, L. W., Langford, A. O., Oltmans, S. J., Tarasick, D., and Rieder, H. E.: Climate variability modulates western US ozone air quality in spring via deep stratospheric intrusions, *Nat. Commun.*, 6, 7105, <https://doi.org/10.1038/ncomms8105>, 2015.

- McCarty, W., Coy, L., Gelaro, R., Huang, A., Merkova, D., Smith, E., Sienkiewicz, M., and Wargan, K.: MERRA-2 Input Observations: Summary and Assessment, Tech. Rep. Ser. on Global Modeling and Data Assimilation, 46, NASA/TM–2016–104606, Greenbelt, MD, USA, 64 pp., 2016.
- Merrill, J. T.: Isentropic airflow probability analysis, *J. Geophys. Res.*, 99, 25881–25889, <https://doi.org/10.1029/94JD02211>, 1994.
- Mickley, L., Jacob, D., Field, B., and Rind, D.: Climate response to the increase in tropospheric ozone since preindustrial times: a comparison between ozone and equivalent CO₂ forcings, *J. Geophys. Res.*, 109, D05106, <https://doi.org/10.1029/2003JD003653>, 2004.
- Monks, P. S.: A review of the observations and origins of the spring ozone maximum, *Atmos. Environ.*, 34, 3545–3561, 2000.
- Monks, P. S., Granier, C., Fuzzi, S., Stohl, A., Williams, M. L., Aki-moto, H., Amann, M., Baklanov, A., Baltensperger, U., Bey, I., Blake, N., Blake, R. S., Carslaw, K., Cooper, O. R., Dentener, F., Fowler, D., Fragkou, E., Frost, G. J., Generoso, S., Ginoux, P., Grewe, V., Guenther, A., Hansson, H. C., Henne, S., Hjorth, J., Hofzumahaus, A., Huntrieser, H., Isaksen, I. S. A., Jenkin, M. E., Kaiser, J., Kanakidou, M., Klimont, Z., Kulmala, M., Laj, P., Lawrence, M. G., Lee, J. D., Liousse, C., Maione, M., McFiggans, G., Metzger, A., Mieville, A., Moussiopoulos, N., Orlando, J. J., O'Dowd, C. D., Palmer, P. I., Parrish, D. D., Petzold, A., Platt, U., Pöschl, U., Prévôt, A. S. H., Reeves, C. E., Reimann, S., Rudich, Y., Sellegri, K., Steinbrecher, R., Simpson, D., ten Brink, H., Theloke, J., van der Werf, G. R., Vautard, R., Vestreng, V., Vlachokostas, C., and von Glasow, R.: Atmospheric composition change – global and regional air quality, ACCENT Synthesis, *Atmos. Environ.*, 43, 5268–5350, <https://doi.org/10.1016/j.atmosenv.2009.08.021>, 2009.
- Oltmans, S. J. and Levy, H.: Surface ozone measurements from a global network, *Atmos. Environ.*, 28, 9–24, [https://doi.org/10.1016/1352-2310\(94\)90019-1](https://doi.org/10.1016/1352-2310(94)90019-1), 1994.
- Ott, L. E., Duncan, B. N., Thompson, A. M., Diskin, G., Fasnacht, Z., Langford, A. O., Lin, M., Molod, A. M., Nielsen, J. E., Pusede, S. E., Wargan, K., Weinheimer, A. J., and Yoshida, Y.: Frequency and impact of summertime stratospheric intrusions over Maryland during DISCOVER-AQ (2011): new evidence from NASA's GEOS-5 simulations, *J. Geophys. Res.*, 121, 3687–3706, <https://doi.org/10.1002/2015JD024052>, 2016.
- Owen, R. C., Cooper, O. R., Stohl, A., and Honrath, R. E.: An analysis of the mechanisms of North American pollutant transport to the central North Atlantic lower free troposphere, *J. Geophys. Res.*, 111, D23S58, <https://doi.org/10.1029/2006JD007062>, 2006.
- Parrish, D. D., Law, K. S., Staehelin, J., Derwent, R., Cooper, O. R., Tanimoto, H., Volz-Thomas, A., Gilge, S., Scheel, H. E., Steinbacher, M., and Chan, E.: Long-term changes in lower tropospheric baseline ozone concentrations at northern mid-latitudes, *Atmos. Chem. Phys.*, 12, 11485–11504, <https://doi.org/10.5194/acp-12-11485-2012>, 2012.
- Parrish, D. D., Galbally, I. E., Lamarque, J.-F., Naik, V., Horowitz, L., Shindell, D. T., Oltmans, S. J., Derwent, R., Tanimoto, H., Labuschagne, C., and Cupeiro, M.: Seasonal cycles of O₃ in the marine boundary layer: observation and model simulation comparisons, *J. Geophys. Res.*, 121, 538–557, <https://doi.org/10.1002/2015JD024101>, 2016.
- Pausata, F. S. R., Pozzoli, L., Vignati, E., and Dentener, F. J.: North Atlantic Oscillation and tropospheric ozone variability in Europe: model analysis and measurements intercomparison, *Atmos. Chem. Phys.*, 12, 6357–6376, <https://doi.org/10.5194/acp-12-6357-2012>, 2012.
- Press, W. H., Teukolsky, S. A., Vetterling, W. T., and Flannery, B. P.: Numerical recipes in FORTRAN: the art of scientific computing, second edn., Cambridge Univ. Press, New York, USA, 1992.
- Purser, R. J., Wu, W.-S., Parrish, D. F., and Roberts, N. M.: Numerical aspects of the application of recursive filters to variational statistical analysis. Part I: Spatially homogeneous and isotropic Gaussian covariances, *Mon. Weather Rev.* 131, 1524–1535, [https://doi.org/10.1175/1520-0493\(2003\)131<1524:NAOTAO>2.0.CO;2](https://doi.org/10.1175/1520-0493(2003)131<1524:NAOTAO>2.0.CO;2), 2003a.
- Purser, R. J., Wu, W.-S., Parrish, D. F., and Roberts, N. M.: Numerical aspects of the application of recursive filters to variational statistical analysis. Part II: Spatially inhomogeneous and anisotropic general covariances, *Mon. Weather Rev.* 131, 1536–1548, [https://doi.org/10.1175/1520-0493\(2003\)131<1536:NAOTAO>2.0.CO;2](https://doi.org/10.1175/1520-0493(2003)131<1536:NAOTAO>2.0.CO;2), 2003b.
- Roelofs, G. J., Kentarchos, A. S., Trickl, T., Stohl, A., Collins, W. J., Crowther, R. A., Hauglustaine, D., Klonicki, A., Law, K. S., Lawrence, M. G., von Kuhlmann, R., and van Weele, M.: Intercomparison of tropospheric ozone models: ozone transport in a complex tropopause folding event, *J. Geophys. Res.*, 108, 8529, <https://doi.org/10.1029/2003JD003462>, 2003.
- Scherrer, S. C., Croci-Maspoli, M., Schwierz, C., and Appenzeller, C.: Two-dimensional indices of atmospheric blocking and their statistical relationship with winter climate patterns in the Euro–Atlantic region, *Int. J. Climatol.*, 26, 233–249, <https://doi.org/10.1002/joc.1250>, 2006.
- Shapiro, M. and Keyser, D.: Fronts, jet streams, and the tropopause, Extratropical cyclones (Chapt. 10), The Erik Palmén Memorial Volume, edited by: Newton, C., and Holopainen, E. O., Amer. Meteor. Soc., Boston, USA, 167–191, 1990.
- Simmonds, P. and Derwent, R.: Measurements of ozone and other radiatively active gases at Mace Head in the Republic of Ireland, International Conference on the Generation of Oxidants Regional and Global Scales, *Atmos. Environ.*, 25, 1795–1808, [https://doi.org/10.1016/0960-1686\(91\)90264-8](https://doi.org/10.1016/0960-1686(91)90264-8), 1991.
- Simmonds, P., Seuring, S., Nickless, G., and Derwent, R.: Segregation and interpretation of ozone and carbon monoxide measurements by air mass origin at the TOR station Mace Head, Ireland from 1987 to 1995, *J. Atmos. Chem.*, 28, 45–59, <https://doi.org/10.1023/A:1005817916497>, 1997.
- Simmonds, P., Derwent, R., Manning, A., and Spain, G.: Significant growth in surface ozone at Mace Head, Ireland, 1987–2003, *Atmos. Environ.*, 38, 4769–4778, <https://doi.org/10.1016/j.atmosenv.2004.04.036>, 2004.
- Škerlak, B., Sprenger, M., and Wernli, H.: A global climatology of stratosphere–troposphere exchange using the ERA-Interim data set from 1979 to 2011, *Atmos. Chem. Phys.*, 14, 913–937, <https://doi.org/10.5194/acp-14-913-2014>, 2014.
- Sprenger, M. and Wernli, H.: A northern hemispheric climatology of cross-tropopause exchange for the ERA15 time period (1979–1993), *J. Geophys. Res.*, 108, 8521, <https://doi.org/10.1029/2002JD002636>, 2003.
- Stajner, I., Wargan, K., Pawson, S., Hayashi, H., Chang, L.-P., Hudman, R. C., Froidevaux, L., Livesey, N., Levelt, P. F., Thompson, A. M., Tarasick, D. W., Stübi, R., Andersen, S. B., Yela, M.,

- König-Langlo, G., Schmidlin, F. J., and Witte, J. C.: Assimilated ozone from EOS-Aura: evaluation of the tropopause region and tropospheric columns, *J. Geophys. Res.*, 113, D16S32, <https://doi.org/10.1029/2007JD008863>, 2008.
- Stein, O.: Model documentation of the MOZART CTM as implemented in the GEMS system, available at: <http://gems.ecmwf.int/do/get/PublicDocuments/1531/1172> (last access: 4 November 2013), 2009.
- Stein, O., Flemming, J., Inness, A., Kaiser, J. W., and Schultz, M. G.: Global reactive gases forecasts and reanalysis in the MACC project, *J. Integrative Environ. Sci.*, 9, 57–70, <https://doi.org/10.1080/1943815X.2012.696545>, 2012.
- Stohl, A.: A 1-year Lagrangian “climatology” of airstreams in the Northern Hemisphere troposphere and lowermost stratosphere, *J. Geophys. Res.*, 106, 7263–7279, <https://doi.org/10.1029/2000JD900570>, 2001.
- Stohl, A., Eckhardt, S., Forster, C., James, P., and Spichtinger, N.: On the pathways and timescales of intercontinental air pollution transport, *J. Geophys. Res.*, 107, ACH 6-1–ACH 6-17, <https://doi.org/10.1029/2001JD001396>, 2002.
- Thompson, A. M., Pickering, K. E., Dickerson, R. R., Ellis, W. G., Jacob, D. J., Scala, J. R., Tao, W.-K., McNamara, D. P., and Simpson, J.: Convective transport over the central United States and its role in regional CO and ozone budgets, *J. Geophys. Res.*, 99, 18703–18711, <https://doi.org/10.1029/94JD01244>, 1994.
- Tørseth, K., Aas, W., Breivik, K., Fjæraa, A. M., Fiebig, M., Hjellbrekke, A. G., Lund Myhre, C., Solberg, S., and Yttri, K. E.: Introduction to the European Monitoring and Evaluation Programme (EMEP) and observed atmospheric composition change during 1972–2009, *Atmos. Chem. Phys.*, 12, 5447–5481, <https://doi.org/10.5194/acp-12-5447-2012>, 2012.
- Trickl, T., Cooper, O. R., Eisele, H., James, P., Mücke, R., and Stohl, A.: Intercontinental transport and its influence on the ozone concentrations over central Europe: three case studies, *J. Geophys. Res.*, 108, 8530, <https://doi.org/10.1029/2002JD002735>, 2003.
- Trickl, T., Vogelmann, H., Fix, A., Schäfler, A., Wirth, M., Calpini, B., Levrat, G., Romanens, G., Apituley, A., Wilson, K. M., Begbie, R., Reichardt, J., Vömel, H., and Sprenger, M.: How stratospheric are deep stratospheric intrusions? LUAMI 2008, *Atmos. Chem. Phys.*, 16, 8791–8815, <https://doi.org/10.5194/acp-16-8791-2016>, 2016.
- Viezee, W., Johnson, W. B., and Singh, H. B.: Stratospheric ozone in the lower troposphere – I. Assessment of downward flux and ground-level impact, *Atmos. Environ.*, 17, 1979–1993, [https://doi.org/10.1016/0004-6981\(83\)90354-2](https://doi.org/10.1016/0004-6981(83)90354-2), 1983.
- Walker, G. T. and Bliss, E. W.: *World Weather V*, Memoirs of the Royal Meteorological Society, 4, 53–84, 1932.
- Wargan, K., Pawson, S., Olsen, M. A., Witte, J. C., Douglass, A. R., Ziemke, J. R., Strahan, S. E., and Nielsen, J. E.: The global structure of upper troposphere-lower stratosphere ozone in GEOS-5: a multiyear assimilation of EOS Aura data, *J. Geophys. Res.*, 120, 2013–2036, <https://doi.org/10.1002/2014JD022493>, 2015.
- Wargan, K., Labow, G., Frith, S., Pawson, S., Livesey, N., and Partyka, G.: Evaluation of the ozone fields in NASA’s MERRA-2 reanalysis, *J. Climate*, 30, 2961–2988, <https://doi.org/10.1175/JCLI-D-16-0699.1>, 2017.
- Waters, J. W., Froidevaux, L., Harwood, R. S., Jarnot, R. F., Pickett, H. M., Read, W. G., Siegel, P. H., Cofield, R. E., Filipiak, M. J., Flower, D. A., Holden, J. R., Lau, G. K., Livesey, N. J., Manney, G. L., Pumphrey, H. C., Santee, M. L., Wu, D. L., Cuddy, D. T., Lay, R. R., Loo, M. S., Perun, V. S., Schwartz, M. J., Stek, P. C., Thurstans, R. P., Boyles, M. A., Chandra, K. M., Chavez, M. C., Chen, G.-S., Chudasama, B. V., Dodge, R., Fuller, R. A., Girard, M. A., Jiang, J. H., Jiang, Y., Knosp, B. W., LaBelle, R. C., Lam, J. C., Lee, K. A., Miller, D., Oswald, J. E., Patel, N. C., Pukala, D. M., Quintero, O., Scaff, D. M., Snyder, W. V., Tope, M. C., Wagner, P. A., and Walch, M. J.: The Earth Observing System Microwave Limb Sounder (EOS MLS) on the Aura Satellite, *IEEE T. Geosci. Remote*, 44, 1075–1092, 2006.
- Wilson, R. C., Fleming, Z. L., Monks, P. S., Clain, G., Henne, S., Konovalov, I. B., Szopa, S., and Menut, L.: Have primary emission reduction measures reduced ozone across Europe? An analysis of European rural background ozone trends 1996–2005, *Atmos. Chem. Phys.*, 12, 437–454, <https://doi.org/10.5194/acp-12-437-2012>, 2012.
- Wu, W.-S., Purser, R. J., and Parrish, D. F.: Three-dimensional variational analysis with spatially inhomogeneous covariances, *Mon. Weather Rev.*, 130, 2905–2916, [https://doi.org/10.1175/1520-0493\(2002\)130<2905:TDVAWS>2.0.CO;2](https://doi.org/10.1175/1520-0493(2002)130<2905:TDVAWS>2.0.CO;2), 2002.