

From roads to biobanks: roadkill animals as a valuable source of genetic data

Article

Published Version

Creative Commons: Attribution 4.0 (CC-BY)

Open Access

Coba-Males, M. A., Medrano-Vizcaino, P., Enríquez, S., Brito-Zapata, D., Martin-Solano, S., Ocaña-Mayorga, S., Carrillo-Bilbao, G. A., Narváez, W., Salas, J. A., Arrivillaga-Henríquez, J., González-Suárez, M. ORCID: <https://orcid.org/0000-0001-5069-8900> and Poveda, A. (2023) From roads to biobanks: roadkill animals as a valuable source of genetic data. PLoS ONE, 18 (12). e0290836. ISSN 1932-6203 doi: 10.1371/journal.pone.0290836 Available at <https://reading-pure-test.eprints-hosting.org/114223/>

It is advisable to refer to the publisher's version if you intend to cite from the work. See [Guidance on citing](#).

To link to this article DOI: <http://dx.doi.org/10.1371/journal.pone.0290836>

Publisher: Public Library of Science

All outputs in CentAUR are protected by Intellectual Property Rights law, including copyright law. Copyright and IPR is retained by the creators or other copyright holders. Terms and conditions for use of this material are defined in the [End User Agreement](#).

www.reading.ac.uk/centaur




CentAUR

Central Archive at the University of Reading


Reading's research outputs online

RESEARCH ARTICLE

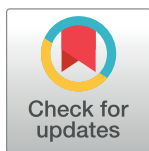
From roads to biobanks: Roadkill animals as a valuable source of genetic data

Manuel Alejandro Coba-Males¹ , Pablo Medrano-Vizcaíno^{2,3,4} , Sandra Enríquez¹, David Brito-Zapata^{4,5}, Sarah Martin-Solano⁶, Sofía Ocaña-Mayorga⁷ , Gabriel Alberto Carrillo-Bilbao¹, Wilmer Narváez¹, Jaime Antonio Salas⁸ , Jazzmín Arrivillaga-Henríquez¹, Manuela González-Suárez¹ , Ana Poveda¹ *

1 Grupo de Investigación en Biodiversidad, Zoonosis y Salud Pública (GIBCIZ), Instituto de Investigación en Zoonosis (CIZ), Facultad de Ciencias Químicas (FCQ), Universidad Central del Ecuador, Quito, Ecuador, **2** Ecology and Evolutionary Biology, School of Biological Sciences, University of Reading, Reading, United Kingdom, **3** Universidad Regional Amazónica IKIAM, Grupo de Investigación Población y Ambiente, Tena, Ecuador, **4** Red Ecuatoriana para el Monitoreo de Fauna Atropellada-REMFA, Quito, Ecuador, **5** Instituto iBIOTROP, Museo de Zoología & Laboratorio de Zoología Terrestre, Universidad San Francisco de Quito USFQ, Quito, Ecuador, **6** Grupo de Investigación en Sanidad Animal y Humana (GISAH), Carrera Ingeniería en Biotecnología, Departamento de Ciencias de la Vida y la Agricultura, Universidad de las Fuerzas Armadas—ESPE, Sangolquí, Ecuador, **7** Centro de Investigación para la Salud en América Latina, Facultad de Ciencias Exactas y Naturales, Pontificia Universidad Católica del Ecuador, Quito, Ecuador, **8** Facultad de Ciencias Naturales, Carrera de Biología, Universidad de Guayaquil, Guayaquil, Ecuador

 These authors contributed equally to this work.

* manuela.gonzalez@reading.ac.uk (MGS); apoveda@uce.edu.ecapo (AP)



OPEN ACCESS

Citation: Coba-Males MA, Medrano-Vizcaíno P, Enríquez S, Brito-Zapata D, Martin-Solano S, Ocaña-Mayorga S, et al. (2023) From roads to biobanks: Roadkill animals as a valuable source of genetic data. *PLoS ONE* 18(12): e0290836. <https://doi.org/10.1371/journal.pone.0290836>

Editor: Ruslan Kalendar, University of Helsinki: Helsingin Yliopisto, FINLAND

Received: April 5, 2023

Accepted: August 15, 2023

Published: December 7, 2023

Peer Review History: PLOS recognizes the benefits of transparency in the peer review process; therefore, we enable the publication of all of the content of peer review and author responses alongside final, published articles. The editorial history of this article is available here: <https://doi.org/10.1371/journal.pone.0290836>

Copyright: © 2023 Coba-Males et al. This is an open access article distributed under the terms of the [Creative Commons Attribution License](https://creativecommons.org/licenses/by/4.0/), which permits unrestricted use, distribution, and reproduction in any medium, provided the original author and source are credited.

Data Availability Statement: All relevant data are within the manuscript and its [Supporting Information](#) files.

Abstract

To protect biodiversity we must understand its structure and composition including the bacteria and microparasites associated with wildlife, which may pose risks to human health. However, acquiring this knowledge often presents challenges, particularly in areas of high biodiversity where there are many undescribed and poorly studied species and funding resources can be limited. A solution to fill this knowledge gap is sampling roadkill (animals that die on roads as a result of collisions with circulating vehicles). These specimens can help characterize local wildlife and their associated parasites with fewer ethical and logistical challenges compared to traditional specimen collection. Here we test this approach by analyzing 817 tissue samples obtained from 590 roadkill vertebrate specimens (Amphibia, Reptilia, Aves and Mammalia) collected in roads within the Tropical Andes of Ecuador. First, we tested if the quantity and quality of recovered DNA varied across roadkill specimens collected at different times since death, exploring if decomposition affected the potential to identify vertebrate species and associated microorganisms. Second, we compared DNA stability across taxa and tissues to identify potential limitations and offer recommendations for future work. Finally, we illustrate how these samples can aid in taxonomic identification and parasite detection. Our study shows that sampling roadkill can help study biodiversity. DNA was recovered and amplified (allowing species identification and parasite detection) from roadkill even 120 hours after death, although risk of degradation increased overtime. DNA was extracted from all vertebrate classes but in smaller quantities and with lower quality from amphibians. We recommend sampling liver if possible as it produced the highest amounts of DNA (muscle produced the lowest). Additional testing of this approach in areas with different environmental and traffic conditions is needed, but our results show that

Funding: The authors would like to thank to: Corporación Ecuatoriana para el Desarrollo de la Investigación y Academia - CEDIA for the financial support given to the present research, development, and innovation work through its CEPRA program, especially for the Estudio de parásitos y microbioma de fauna silvestre en dos de las zonas más biodiversas del planeta: Los Andes Tropicales y Chocó-Darién en Ecuador fund (<https://cedia.edu.ec/servicio/fondo-idi-universidades/cepra-xvi-2022/>); Dirección de Investigación de la Universidad Central del Ecuador for Proyecto Senior 2021 fund (<https://www.uce.edu.ec/web/di>), and Reading University for SBS Seed Fund and a University International PhD studentship to PMV (<https://www.reading.ac.uk/>). The funders had no role in study design, data collection and analysis, decision to publish, or preparation of the manuscript.

Competing interests: The authors have declared that no competing interests exist.

sampling roadkill specimens can help detect and potentially monitor biodiversity and could be a valuable approach to create biobanks and preserve genetic data.

Introduction

Characterizing biodiversity including bacteria and microparasites is key to ensure planetary and human health. However, acquiring this knowledge often presents challenges including ethical (the need to capture, handle, and take samples from living organisms without causing damage or death), logistical (the difficulty and cost of safely capturing and handling wildlife), and methodological (the challenges for identifying and quantifying biodiversity in less studied regions and from microscopic bacteria and parasites). In biodiverse and remote areas where funding and research infrastructure are more limited, these challenges can be particularly significant. This knowledge gap could be partly reduced by capitalizing on a potential source of information: the animals that die on roads after collision with circulating vehicles, commonly referred to as roadkill.

Human infrastructures, including roads, have important impacts on wildlife by hindering movement (for food, mates, and refuge) and also causing direct mortality [1]. These aspects can lead to population isolation, loss of genetic diversity, and in some cases even increased extinction risk [2, 3]. However, animals that die on roads can be valuable resources for research. Roadkill specimens can capture the (primarily vertebrate) biodiversity of a particular location and give information about species distributions, behavior, diet, and other ecological and physiological characteristics [4]. Unfortunately, in some cases the required taxonomic identification can be difficult via direct examination due to the state of the specimen, these can decompose or present damage caused by the collision and subsequent vehicles driving over. As an alternative, collecting tissue from specimens could allow their identification via DNA sequencing [5].

Tissue collected from roadkill specimens can also provide very valuable information about associated microorganisms such as fungi, protozoan, bacteria, and viruses [6–10]. This information is important because these microorganisms can be pathogenic for wildlife and thus, relevant for wildlife conservation and management. In addition, wildlife can act as reservoirs of human pathogens posing a health problem [9]. In this case, roadkill sampling used to detect pathogens could align well with the One Health framework that integrates animal, human, and environmental health [11]. Pathogen data can be obtained using traditional sampling methods (from live animals), but these are often invasive and can negatively affect wildlife, so there is a need for improved methods [12]. Alternative methods based on non-invasive sampling from excretions or feces avoid impact but often the amount of extracted DNA is low [13, 14]. Sampling roadkill could be a useful approach in areas where roads exist, offering no sampling impact and potentially higher DNA yield. However, first we need to understand how the source of the sample (which taxa and tissue) and the degree of decomposition of the roadkill specimen affect DNA quantity and quality (purity and integrity) [15, 16].

Here, we address these questions by analyzing 817 samples from 590 roadkill specimens representing amphibians, reptiles, birds, and mammals found dead on roads of the Napo province in Ecuador. Whenever possible we collected samples from multiple tissues of the same individual and report the obtained DNA quantity and quality. In addition, we explore the value of collected samples for molecular identification of specimens and for detection of microorganisms, in particular of the protozoan *Leishmania* spp. These parasites can affect

humans, domestic animals like dogs and cats [17], wild mammals [18, 19], and likely birds and reptiles [19–21].

Materials and methods

Study area and roadkill sampling

This work was conducted in the Amazonian province of Napo in Ecuador. We surveyed roads surrounded by four protected areas: Antisana Ecological Reserve, Sumaco-Napo-Galeras National Park, Cayambe-Coca National Park, and Colonso Chalupas Biological Reserve. This area is located across an altitudinal gradient from 300 to 3000 m.a.s.l. and a climatic gradient, with annual mean temperature varying from 4.63 to 23.7°C and annual precipitation from 1100 to 3400 mm. The study area is described in more detail in previous publications [22, 23].

During 100 non-consecutive days from the 19th of September 2020 to the 23rd of March 2021, we monitored 240 km of primary and secondary roads from a car circulating at an average speed of 40 km/h. Each time we found a carcass, we stopped the car, collected the whole individual or muscle samples if the state of the carcass preventing subsequent dissection for tissue extraction. All collected material was stored in a container with dry ice until the end of the day when all was taken to a laboratory. In the laboratory whole individuals were dissected aiming to extract samples of muscle, brain, liver, heart, intestine, blood, blood vessel, bone, lung, skin, and spleen. The condition of some specimens did not allow collecting samples from all tissues. All samples were then frozen at -80°C until DNA extraction (see below).

For each specimen we estimated the time since death, *TimeDeath*, in time blocks representing: 0, 12, 24, 36, 48, 60, 72, 96, or 120 hours. Observers had been previously trained to estimate time since death by marking roadkill specimens which were revisited daily for ten days to characterize degradation [22, 24].

All samples were collected with permission from the Ministerio del Ambiente, Agua y Transición Ecológica from Ecuador (MAATE): Estudio e identificación molecular de parásitos y microbioma presentes en fauna silvestre del Ecuador, No. MAAE-DBI-CM-2021-0215, MAAE-ARSFC-2021-1862 and MAAE-ARSFC-2020-0791.

DNA extraction and evaluation of quantity and quality

We extracted DNA from tissues using a commercial kit (PureLink™ Genomic DNA Mini Kit, from Invitrogen by Thermo Fisher Scientific) following the manufacturer's instructions. We measured the quantity of nucleic acids using a Nanodrop 2000 (Thermo Fisher Scientific) with values transformed into ng/μL (full dataset available as [S1 File](#)). To assess DNA quality, we considered two parameters: the purity given by the ratio A_{260}/A_{280} , and integrity. Integrity was only evaluated in intestine tissue samples as we were particularly interested in microbiome and gastrointestinal parasites. We qualitatively classified integrity based on the size of the smear observed in gel electrophoresis [25] as: “minor degradation” (sizes over 6000 bp), “medium degradation” (sizes from 1500 bp to 6000 bp), or “high degradation” (sizes below 1500 bp or not visualized DNA).

Statistical analyses. All statistical analyses were conducted in R version 4.2.1 [26]. We tested if DNA quantity and purity were influenced by estimated *TimeDeath* and the taxonomic class of the roadkill specimen using linear regression models with the function `lm` in base R. We fitted models with only additive terms as well as models with an interaction term. We report the most parsimonious model (i.e., if the interaction term was not significant, we report results from the additive model). To avoid pseudoreplication caused by including data from multiple tissues obtained from the same specimen, we selected the sub-sample with higher DNA concentration (ng/μL). Results were qualitatively the same if we instead used the mean

value calculated across tissues from the same specimen (S1 Table). In addition, to test the robustness of results to the potential non-independence of data obtained from related organisms with shared evolutionary history, we also fitted linear mixed effects regression models using the function `lmer` from the `lme4` package version 1.1–27.1 [27] with taxonomic order and family as nested values random effects. Because not all specimens could be identified to order or family levels, mixed effect models included fewer specimens.

To test if DNA quantity and purity were influenced by the sampled tissue, we focused on tissues sampled from at least 50 specimens (obtaining samples from some tissues was difficult due to their size and degradation). In this case we analyzed all samples, including replicates from the same specimen, and thus, to avoid pseudoreplication we fitted mixed effects regression models with specimen ID as a random factor using the function `lmer` from the `lme4` package version 1.1–27.1.

To meet assumptions of normality and homoscedasticity of residuals we \log_{10} transformed DNA quantity and purity values. Model assumptions (linearity, normality and homoscedasticity of residuals, and lack of outliers) were visually checked using the function `check_model` from the `performance` package version 0.7.2 [28]. This function also returns Variance Inflation Factors (VIF) that were used to test for collinearity among predictors. We used the function `emtrends` from the package `emmeans` version 1.6.1 [29] to estimate the estimated marginal means reported as model output.

Molecular identification of vertebrates and parasites

For the identification of vertebrate specimens, we amplified 700 bp of mitochondrial *cytochrome C oxidase subunit 1* (*COI*) using 10 pmol/ μ L of two primer cocktails. The forward cocktail (C_VF1LFt1) contained VF1_t1:VF1d_t1:LepF1_t1:VF1i_t1 (1:1:1:3). The reverse cocktail (C_VR1LRt1) contained VR1_t1:VR1d_t1:LepRI_t1:VR1i_t1 (1:1:1:3) (Table 1). Analyses focused on eight specimens (seven reptiles and one amphibian) that could not be identified through direct observation (i.e., traditional taxonomic identification) as our goal was to generate a complete identified dataset.

The polymerase chain reaction (PCR) was performed with Platinum™ Taq DNA Polymerase from Invitrogen as described by Hebert et al. [32] with some modifications; 2.5 μ L buffer 10 X, 1.15 μ L (2.3 mM) $MgCl_2$, 0.12 μ L (0.046 mM) dNTPs, 0.25 μ L (0.1 mM) of each cocktail of oligonucleotides (C_VF1LFt1 and C_VR1LRt1), 7.5 μ L (0.3 mg/mL) of BSA, 0.5 U of Taq polymerase, and 100 ng of DNA per reaction in a final volume of 25 μ L. PCR amplification was performed with an initial denaturation step (94°C, 1 min), followed by 5 cycles of denaturation (94°C, 1 min), annealing (50°C, 40 sec), and polymerization (72°C, 1 min), followed of 30 cycles of denaturation (95°C, 15 sec), annealing (54°C, 20 sec) and polymerization (72°C, 45 sec), and a final step of 10 min at 72°C.

To detect *Leishmania* spp. we amplified a small subunit (18S) of ribosomal RNA (*18S SSU-rRNA*) from liver samples of roadkill specimens [33] using universal primers (Table 1). We first used the external primers SLF/S762R (primary amplification) and the internal primers S825F/SLIR targeting a ~959 bp product of the first half (Nt) of the *18S SSU-rRNA* locus [31]. The polymerase chain reaction (PCR) was performed with Platinum™ Taq DNA Polymerase from Invitrogen with 2.5 μ L buffer 10 X, 0.75 μ L (1.5 mM) $MgCl_2$, 0.5 μ L (0.2 mM) dNTPs, 1 μ L (0.4 μ M) of each oligonucleotide, 0.5 U of Taq polymerase, and 100 ng of DNA for reaction in a final volume of 25 μ L. PCR amplification was as described previously for primary and secondary *18S SSU-rRNA* [31].

We visualized the PCR products by DNA electrophoresis on a 1.5% agarose gel. Positive amplicons, identified by their size (~700 bp for the *COI* gene and 959 bp for the *18 SSU-rRNA*

Table 1. PCR primers used in this study to identify vertebrate roadkill specimens and *Leishmania* spp.

<i>COI</i>			
Name	Primer sequence 5'-3'	Reference	
LepF1_t1	TGTAAAACGACGGCCAGTATTCAACCAATCATAAAGATATTGG	[30]	
VF1_t1	TGTAAAACGACGGCCAGTTCTCAACCAACCACAAGACATTGG		
VF1d_t1	TGTAAAACGACGGCCAGT TCTCAACCAACCACAARGAYATYGG		
VF1i_t1	TGTAAAACGACGGCCAGTTCTCAACCAACCAIAAIGAIATIGG		
LepR1_t1	TGTAAAACGACGGCCAGTATTCAACCAATCATAAAGATATTGG		
VR1_t1	TGTAAAACGACGGCCAGTTCTCAACCAACCACAAGACATTGG		
VR1d_t1	TGTAAAACGACGGCCAGT TCTCAACCAACCACAARGAYATYGG		
VR1i_t1	TGTAAAACGACGGCCAGTTCTCAACCAACCAIAAIGAIATIGG		
<i>18S SSU rRNA</i>			
Name	Primer sequence 5'-3'		Reference
SLF	GCTTGTTTCAAGGACTTAGC	[31]	
S762R	GACTTTTGCTTCCTCTAATG		
S823F	CGAACAACTGCCCTATCAGC		
S662R	GACTACAATGGTCTCTAATC		
S825F	ACCGTTTCGGCTTTTGTGG		
SLIR	ACATTGTAGTGCGCGTGTTC		

<https://doi.org/10.1371/journal.pone.0290836.t001>

gene), were sequenced in two directions: forward and reverse (Sanger method) by Macrogen Inc. (South Korea). Resulting sequences were trimmed and edited with Bioedit and MEGA 11 software [34, 35] to perform pairwise alignment, assembling the contig, and creating consensus sequences which were then analyzed by BLAST using the blastn algorithm in NCBI (National Center for Biotechnology Information) [36]. To assign sequences to *Leishmania* spp. and relevant vertebrate genera we used a threshold of 85% for identity and of 90% for cover.

Results

We obtained 817 samples representing 590 unique roadkill specimens (Table 2, all data in S1 File). From 516 specimens we collected samples from a single tissue; the other 74 specimens were represented by samples from 2–7 different tissues.

Nucleic acids were successfully extracted from 812 samples representing 586 unique roadkill specimens with time since death (*TimeDeath*) varying between 0 and 120 hours. No DNA

Table 2. Summary of the vertebrate roadkill samples analyzed in this study.

	Muscle	Brain	Liver	Heart	Intestine	Blood	Blood vessel	Bone	Lung	Skin	Spleen	
Mammalia	100	1	4	3	2	0	2	2	4	2	2	122
Aves	114	21	19	26	21	3	5	0	19	2	0	230
Amphibia	116	1	3	2	3	0	6	0	1	0	0	132
Reptilia	136	25	31	26	27	0	57	5	15	4	2	328
TOTAL	466	48	57	57	53	3	70	7	39	8	4	812

Number of samples collected from different tissues of roadkill specimens collected in the Napo province of Ecuador. Data are separated by the four taxonomic classes of vertebrates represented in this study. Detailed dataset available as S1 File.

<https://doi.org/10.1371/journal.pone.0290836.t002>

was obtained after extraction for four individuals with single tissue samples. In addition, no DNA was obtained from the brain sample from one specimen, but extractions were successful for the five other tissues obtained from that individual. Table 2 summarizes the samples analyzed.

Effect of time since death on DNA quantity and purity

We obtained DNA from specimens of all sampled taxonomic classes including animals estimated to have died 120 hours before collection. The four specimens from which no DNA was obtained were estimated to have died between 12 and 72 hours before collection. DNA quantity and purity were similar among birds, mammals and reptiles, but Amphibia specimens returned significantly lower amounts and less pure DNA (Fig 1 and Table 3).

DNA quantity was significantly and negatively associated with the estimated time since death in birds but not in other taxonomic classes (Fig 2 and Table 3). DNA purity was not affected by the estimated time since death (Table 3).

DNA quantity and purity from different tissues

We collected 703 samples from five different tissues represented at least by 50 samples: muscle (n = 466), blood vessels (n = 70), heart (n = 57), liver (n = 57), and intestine (n = 53); (see Table 2). DNA quantity varied among the compared tissues, with liver returning significantly more and muscle generally less (Fig 3 and Table 4). There were no differences in DNA purity among tissues (Table 4).

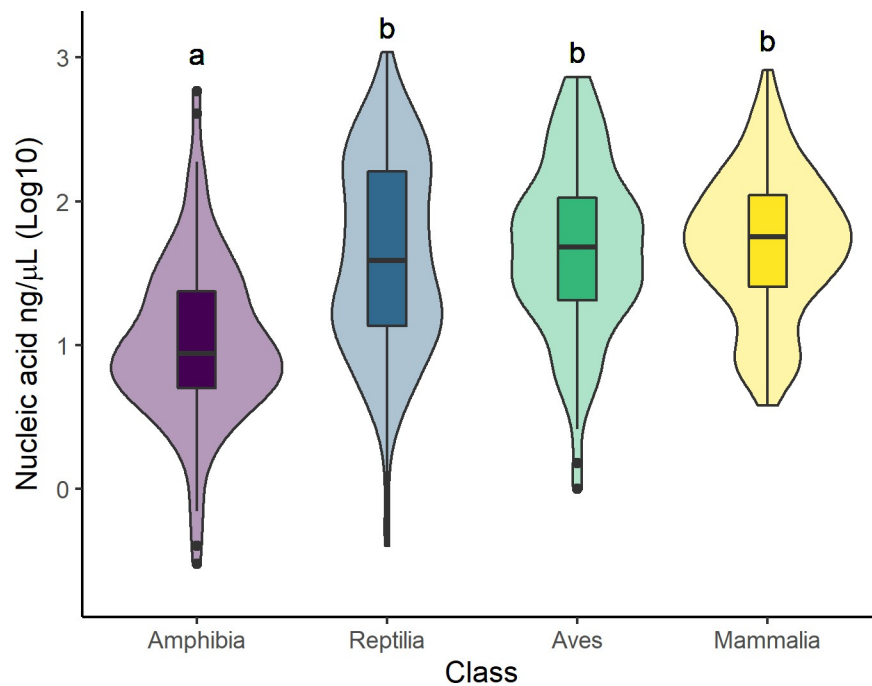


Fig 1. DNA quantification by taxonomic class. Variation in the amount of DNA extracted from 817 tissue samples obtained from specimens of four vertebrate classes collected during roadkill surveys in the Napo region of Ecuador from 2020 to 2021. Different letters above the plot indicate significant differences between the groups.

<https://doi.org/10.1371/journal.pone.0290836.g001>

Table 3. Linear regression models testing how DNA quantity and purity varied by class and time since death.

Predictor	Marginal means	SE	95% CI
<i>Quantity of DNA (log₁₀) (N = 586, R² = 0.18)</i>			
Amphibia	1.010	0.0544	0.906–1.120
Reptilia	1.610	0.0408	1.531–1.690
Aves	1.640	0.0494	1.542–1.740
Mammalia	1.720	0.0574	1.604–1.830
Amphibia <i>TimeDeath</i>	-0.002	0.0028	-0.0072–0.0038
Reptilia <i>TimeDeath</i>	-0.001	0.0015	-0.0031–0.00263
Aves <i>TimeDeath</i>	-0.009	0.0023	-0.0136 – -0.0047
Mammalia <i>TimeDeath</i>	-0.004	0.0023	-0.0081–0.00091
<i>Purity of DNA (log₁₀) (N = 586, R² = 0.02)</i>			
Amphibia	0.217	0.0067	0.204–0.230
Reptilia	0.245	0.0050	0.235–0.255
Aves	0.243	0.0061	0.231–0.255
Mammalia	0.245	0.0070	0.231–0.259
<i>TimeDeath</i>	-0.0002	0.0001	-0.0005–0.00001

Linear regression results show how the amount and purity of DNA (log₁₀ scale) were influenced by the estimated time since death (*TimeDeath*) and the taxonomic class. Samples were collected during roadkill surveys in the Napo region of Ecuador from 2020 to 2021. We report estimated marginal means for each predictor and the interaction term (when interactions were significant), their standard error (SE), and their 95% confidence intervals (95% CI). For each model, we also report the number of specimens (*N*) for which data were available and the adjusted *R*² of the model. Results were qualitatively the same when accounting for evolutionary relationships in random effects models and when considering the mean of DNA amount per specimen (when multiple tissues were analyzed) instead of the best value (S1 Table).

<https://doi.org/10.1371/journal.pone.0290836.t003>

DNA integrity

DNA quantity ranged from 0.2 to 665 ng/μL among the 53 intestine samples analyzed, with a non-significant tendency for DNA to be more degraded in samples with longer times since death (Fig 4A), probably due to exposure to environmental conditions such as rain or high temperatures. Samples scored as high level of degradation yield significantly lower quantities of DNA (Fig 4B).

Successful amplification of specific targets by PCR

We successfully amplified the targeted region of *cytochrome C oxidase subunit 1 (COI)* in the eight tested samples from reptile and amphibian specimens (Fig 5B) despite the variability in the integrity of the extracted genomic DNA (Fig 5A and Table 5). All cover values were >95%, but identity values were lower potentially due to lack of existing sequences in for these species in the NCBI repository. Tentatively, we have used identity values ≥ 85% to assign the specimen to genera (Table 6).

Amplification was successful for *Leishmania* spp. in nine of the 57 liver samples (Fig 6 and Table 7). The match to the *Leishmania* genus had high certainty with cover ≥ 98% and identity ≥ 99%. Samples were best matched to the species *L. amazonensis*, in agreement with previous records from Ecuador [37–39].

While additional testing of the potential for using roadkill species for taxonomic identification and parasitology is needed, our results are promising. We were able to amplify gene

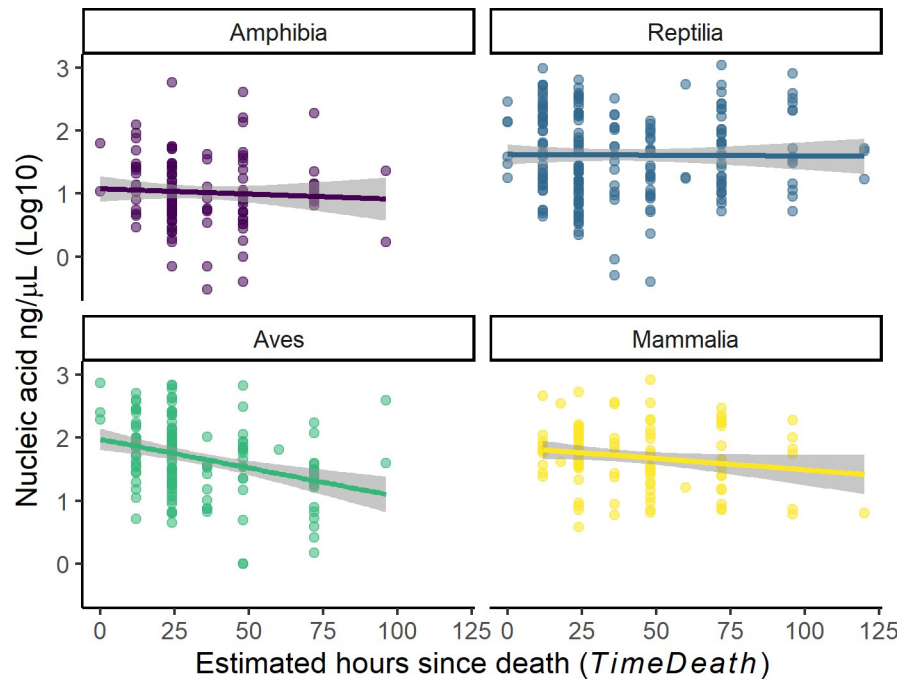


Fig 2. Variation in the obtained quantity DNA from roadkill specimens at different estimated times since death across the four studied taxonomic classes. Symbols represent the observed data with the line and shaded area representing the estimated relationship and 95% CI respectively from a linear regression model (Table 3). Samples were collected during a roadkill survey in the Napo region of Ecuador from 2020 to 2021.

<https://doi.org/10.1371/journal.pone.0290836.g002>

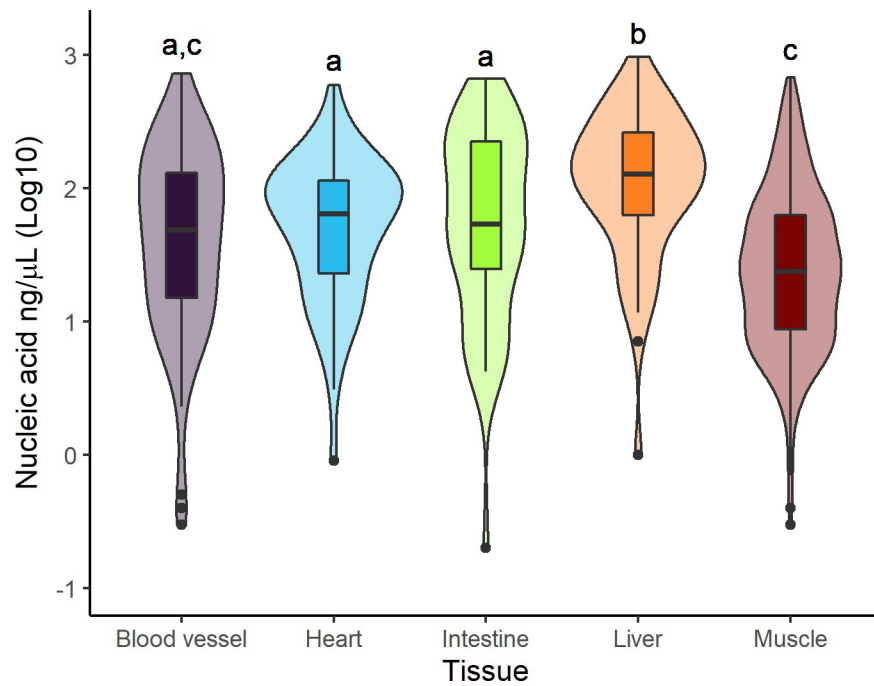


Fig 3. DNA quantification by tissue. Variation in the amount of DNA extracted from different tissues collected from roadkill vertebrates during surveys in the Napo region of Ecuador from 2020 to 2021. Different letters above the plot indicate significant differences between the groups.

<https://doi.org/10.1371/journal.pone.0290836.g003>

Table 4. Linear regression models testing how DNA quantity and purity varied by tissue.

Predictor	Marginal means	SE	95% CI
Quantity of DNA (log₁₀) (N = 703, conditional R² = 0.51, marginal R² = 0.21)			
Amphibia	1.27	0.066	1.14–1.40
Reptilia	1.70	0.045	1.61–1.78
Aves	1.80	0.054	1.69–1.90
Mammalia	1.92	0.069	1.79–2.06
Blood vessel	1.58	0.070	1.44–1.72
Heart	1.66	0.075	1.51–1.81
Intestine	1.72	0.077	1.56–1.87
Liver	2.00*	0.075	1.86–2.15
Muscle	1.39*	0.027	1.34–1.44
Purity of DNA (log₁₀) (N = 703, conditional R² = 0.10, marginal R² = 0.03)			
Amphibia	0.22	0.009	0.204–0.240
Reptilia	0.25	0.006	0.235–0.259
Aves	0.24	0.007	0.229–0.257
Mammalia	0.25	0.010	0.228–0.267
Blood vessel	0.24	0.011	0.222–0.265
Heart	0.27	0.012	0.242–0.288
Intestine	0.22	0.012	0.192–0.240
Liver	0.24	0.012	0.217–0.263
Muscle	0.24	0.004	0.227–0.243

Linear mixed effect regression results show how the amount and purity of DNA (log₁₀ scale) extracted from roadkilled specimens were influenced by the analyzed tissue and taxonomic class. Samples were collected during roadkill surveys in the Napo region of Ecuador completed in 2020–2021. We report estimated marginal means for each predictor and the interaction term (when interactions were significant), and their 95% confidence intervals (95% CI). For each model, we also report the number of specimens (N) for which data were available and the conditional and marginal R² of the model.

<https://doi.org/10.1371/journal.pone.0290836.t004>

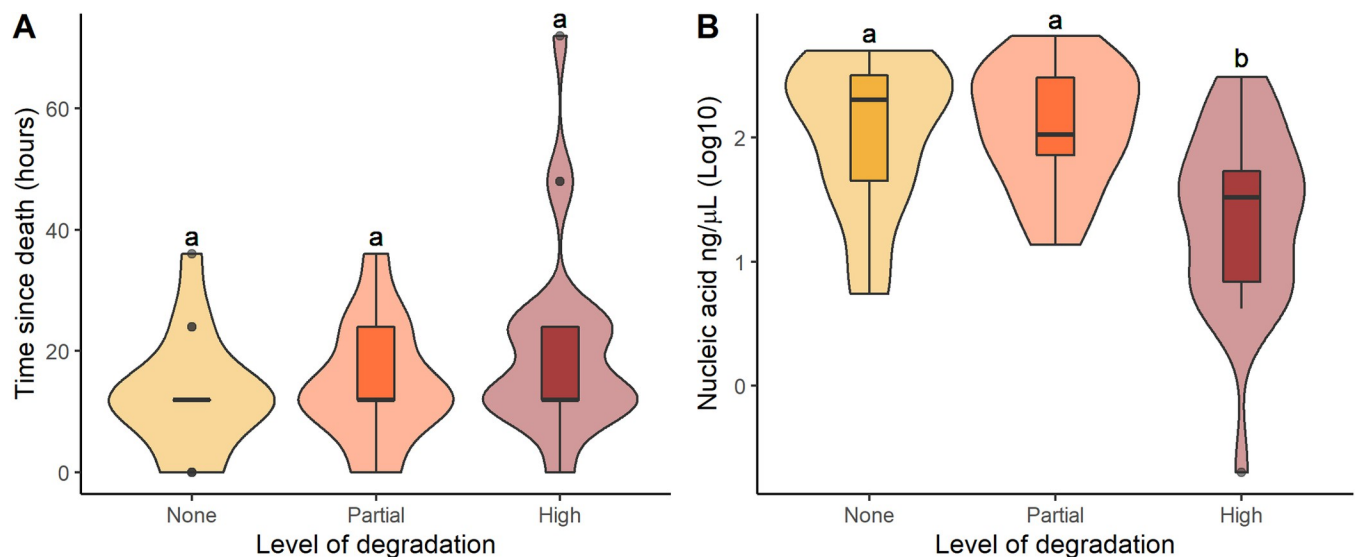


Fig 4. DNA integrity. Variation in the degradation of DNA extracted from intestine tissues collected at varying times time since death (A) and that yield different quantities of DNA (B). Samples were obtained from roadkill vertebrates during surveys in the Napo region of Ecuador completed in 2020–2021. Different letters above the plot indicate significant differences between the groups.

<https://doi.org/10.1371/journal.pone.0290836.g004>

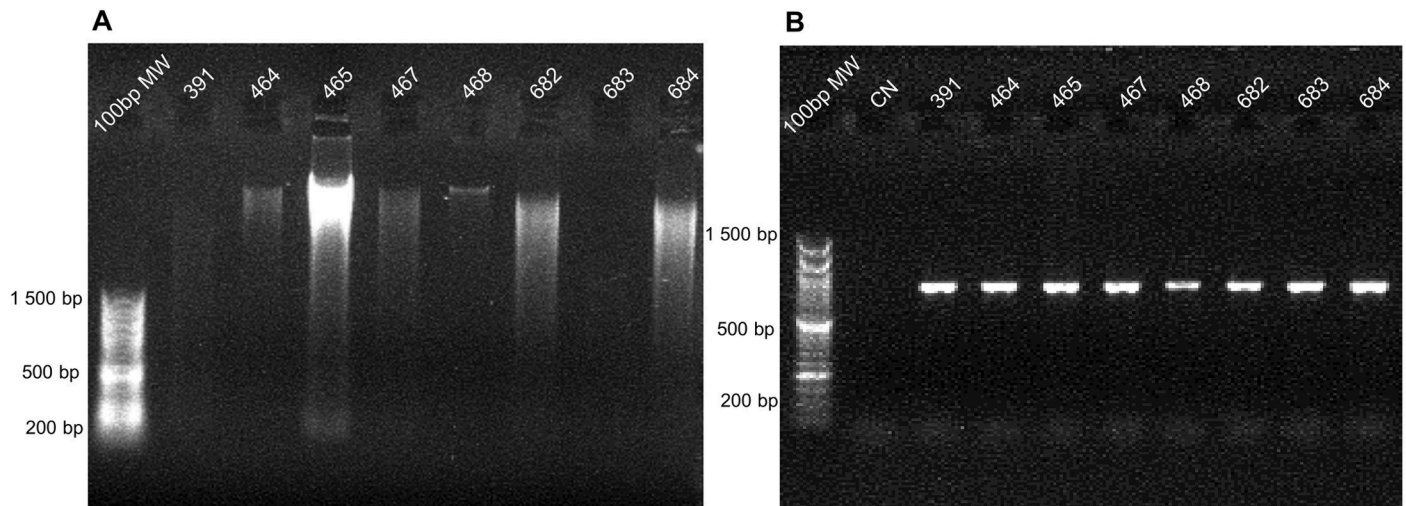


Fig 5. Amplification of the targeted *COI* region for vertebrate taxonomic identification. DNA electrophoresis from the eight tested vertebrate samples containing isolated genomic DNA (A) and the amplified *COI* (B). Molecular weight (MW); Negative control (CN). The identification number of each sample (ID) is shown in the top line.

<https://doi.org/10.1371/journal.pone.0290836.g005>

fragments from DNA samples with concentration as low as 7.1 ng/ μ L (sample 209, Fig 6 and Table 8), and with high degradation (samples 391 and 683, Fig 5; samples 209 and 819, Fig 6).

Discussion

Our results show that tissues samples collected from roadkill wildlife can offer a valuable source of genetic data and thus, contribute to our understanding of biodiversity. Samples can help identify vertebrate species and be use for detection, and potentially monitoring, of micro-organisms including those that can pose risks to human health. While the necessary genetic analyses can be costly (even if rapidly becoming more affordable), sampling roadkill is a simple, relatively low cost, low risk, and low impact (not requiring capturing of wildlife) method to gather tissue from wildlife. While not all animals cross roads or become roadkill, we know that many species are susceptible [40–42] and thus, this sampling approach can provide access to a large diversity of species. The resulting data could contribute to gain much needed understanding of existing biodiversity in less-studied areas and could be used in combination with other approaches such as environmental DNA (eDNA) and metabarcoding [43, 44].

In our study region, a tropical environment with relatively high humidity and non-extreme temperatures (from 4.63 to 23.7°C), we were able to extract DNA from nearly all samples (DNA was not obtained from only five, < 1%, of samples) and even from specimens estimated

Table 5. Qualitative assignment of DNA degradation in vertebrate samples used for molecular taxonomic identification.

Sample ID	391	464	465	467	468	682	683	684
DNA (ng/ μ L)	11.7	17.7	230.6	23.8	10.8	112.0	15.2	191.0
A_{260}/A_{280}	1.82	1.98	1.86	1.79	1.67	1.81	1.72	1.82
Degradation level	3	2	1	2	1	2	3	2
Hours from death	24	0	12	24	0	36	24	24

For the eight samples amplified to test molecular taxonomic identification we show the concentration (ng/ μ L), purity (A_{260}/A_{280}), and degradation level of the obtained DNA and the estimated time since death of the specimen.

<https://doi.org/10.1371/journal.pone.0290836.t005>

Table 6. Local alignment of COI sequences amplified from seven reptilian and one amphibian samples.

ID	Class	Query (bp)	Query cover (%)	Identity (%)	Accession N°	Reference	Match length (bp)
391	Reptilia	664	99	87.18	AB079597.1	<i>Rena humilis</i> mitochondrial DNA	1548
464	Reptilia	671	97	93.12	MH140069.1	<i>Atractus imperfectus</i> voucher CH:9399 cytochrome oxidase subunit 1 (COI) gene, partial.	671
465	Reptilia	656	98	92.39	MH140069.1	<i>Atractus imperfectus</i> voucher CH:9399 cytochrome oxidase subunit 1 (COI) gene, partial.	654
467	Reptilia	656	99	89.08	MH140069.1	<i>Atractus imperfectus</i> voucher CH:9399 cytochrome oxidase subunit 1 (COI) gene, partial.	654
468	Amphibia	670	100	84.33	KF540146.1	<i>Caecilia tentaculata</i> mitochondrion	1553
682	Reptilia	661	97	92.37	MH140069.1	<i>Atractus imperfectus</i> voucher CH:9399 cytochrome oxidase subunit 1 (COI) gene, partial.	654
683	Reptilia	663	98	93.24	MH140069.1	<i>Atractus imperfectus</i> voucher CH:9399 cytochrome oxidase subunit 1 (COI) gene, partial.	654
684	Reptilia	661	97	92.52	MH140069.1	<i>Atractus imperfectus</i> voucher CH:9399 cytochrome oxidase subunit 1 (COI) gene, partial.	654

For the eight samples amplified to test molecular taxonomic identification we show the sample ID, taxonomic class, query length, percentage of the query sequence length that is included in the alignment, percentage identity reflecting the percentage of bases that are identical between the query and the reference genome (match), and details of the match sequences (detected using BLAST) in the NCBI repository.

<https://doi.org/10.1371/journal.pone.0290836.t006>

to have been on the road for 120 hours (5 days). These results suggest this method could be implemented without intensive daily road surveys and still provide a high return of genetic material from collected tissues. While promising, the potential to obtain good quality and pure DNA may vary across regions depending on environmental conditions, mainly temperature and humidity, but also soil acidity and UV exposure [45]. Traffic levels may also be relevant as high numbers of vehicles will contribute to a faster deterioration of roadkill specimens.

We obtained DNA from specimens in all four sampled vertebrate groups, but amphibian samples returned less and lower quality DNA. While we are not sure why, it is possible that the highly permeable dermis of amphibians [46, 47] allows substances present in the environment

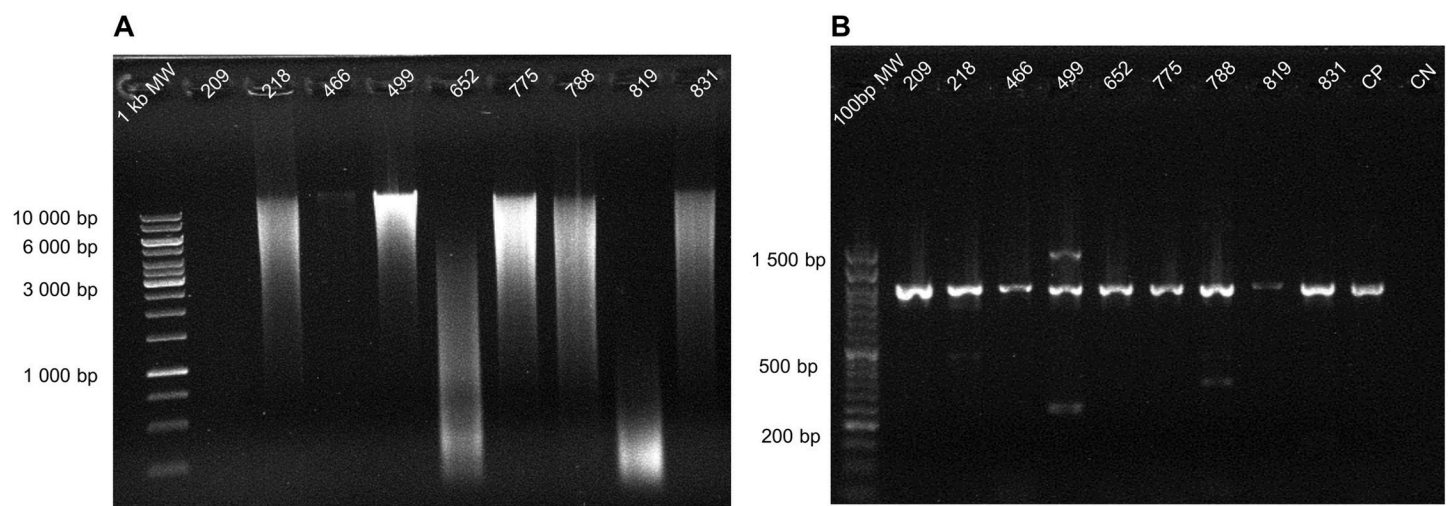


Fig 6. Amplification of molecular target from *Leishmania* spp. DNA electrophoresis from eight samples of vertebrate liver obtained from roadkilled specimens, containing isolated genomic DNA (A), or the amplified 18S SSU rRNA of *Leishmania* spp. (B).

<https://doi.org/10.1371/journal.pone.0290836.g006>

Table 7. Results from local alignment of 18S SSU-rRNA sequences amplified from liver samples using BLAST.

ID	Query (bp)	Query cover (%)	Identity (%)	Accession N°	Reference	Match length (bp)
209	915	99	100	GQ332354.1	<i>Leishmania amazonensis</i> 18S ribosomal RNA gene, complete sequence; and internal transcribed spacer 1, partial sequence	2191
218	908	99	99.89	GQ332354.1		
466	925	98	100	GQ332354.1		
499	919	99	100	GQ332354.1		
652	908	99	99.89	GQ332354.1		
775	911	99	100	GQ332354.1		
788	914	99	100	GQ332354.1		
819	913	99	100	GQ332354.1		
831	914	99	99.89	GQ332354.1		

For the 57 liver samples amplified to explore the molecular detection of *Leishmania* spp. we show the sample ID, query length, percentage of the query sequence length that is included in the alignment, percentage identity reflecting the percentage of bases that are identical between the query and the reference genome (match), and details of the match sequences (detected using BLAST) in the NCBI repository.

<https://doi.org/10.1371/journal.pone.0290836.t007>

to penetrate tissues and cells degrading DNA. In addition, we also found that older (longer times since death) bird samples produced lower quantities of DNA, but this trend was not detected in other taxonomic groups. We are not sure why bird samples were more affected by time since death, but it would be interesting to explore if this pattern is also observed in other regions.

We were also able to obtain DNA from all types of tissues sampled. Liver samples produced higher DNA quantities while muscle generally yield less. Previous studies have also reported higher DNA concentrations from liver [48, 49] which may be linked to regenerating hepatocytes being tetraploids, and thus, containing more DNA [50]. Differences among tissues may be related to differences in cellular structure, cell density, and also different reactions when exposed to environmental conditions [45]. These aspects should be further study, but our initial results suggest that sampling liver, if possible, is ideal.

Not surprisingly, DNA degraded over time (since death). DNA fragmentation can interfere with the amplification of complete target genes and result in sequencing errors [51]. In our study, the observed levels of degradation did not affect amplification for vertebrate identification, but may have affected our ability to amplify parasite DNA. DNA from microorganisms is found in lower quantities within the host tissue and may be more susceptible to degradation affecting amplification [52]. To minimize this risk we used a nested PCR, a technique with high sensibility and specificity for diagnostic of visceral leishmaniasis for samples with low parasitaemia [53]. While we show this technique can be successful, we cannot rule out the possibility that parasites were present in other specimens but we could not detect them.

Table 8. Qualitative assignment of DNA degradation from liver samples.

Sample ID	209	218	466	499	652	775	788	819	831
DNA (ng/μl)	7.1	188.5	11.7	35.9	125.9	123.8	55.3	38.1	261.2
A_{260}/A_{280}	1.52	1.85	1.87	1.66	1.71	1.80	1.76	1.68	1.77
Degradation level	3	2	1	1	3	2	2	3	2
Hours from death	0	24	6	0	6	12	12	1	24

For the 57 liver samples amplified to explore the molecular detection of *Leishmania* spp. we show the concentration (ng/μL), purity (A_{260}/A_{280}), and degradation level of the obtained DNA and the estimated time since death of the specimen.

<https://doi.org/10.1371/journal.pone.0290836.t008>

Overall, our study shows that DNA extracted from carcasses of roadkill animals can be of sufficient quality for downstream applications. Our findings are consistent with conclusions from studies considering postmortem DNA degradation in forensic samples, for example to identify missing people or sequence museum samples [5, 25]. Biobanks of tissues and DNA can be generated from samples collected from roadkill animals without adding an impact on wildlife. These data can help us answer questions about species distributions, diseases, taxonomy, and generally contribute to preserve biological information. Although it is crucial to reduce the negative impacts of roads on wildlife [54], roads are necessary and roadkill will never be completely avoidable. Making the most of a bad situation, roadkill carcasses should be collected and treated as precious samples that can help us gain a better understanding of local biodiversity, especially in countries like Ecuador that have high diversity and rates of endemism, but where much is yet to be learned.

Supporting information

S1 Fig. Electrophoresis gel showing genomic DNA isolated from intestine samples. The sample ID is shown at the top. The bottom labels indicate our qualitative classification: “1” (minor degradation), “2” (medium degradation) o “3” (high degradation). (TIF)

S1 Raw images. Original images of the electrophoresis gels shown in Figs 5B, 6B, and S1. (PDF)

S1 Table. Alternative regression models testing how DNA quantity and purity varied by class and time since death. (DOCX)

S2 Table. Qualitative assignment of DNA degradation. Samples were classified as “1” (minor degradation), “2” (medium degradation) o “3” (high degradation). (DOCX)

S1 File. Database of all samples analyzed in this study. Details of the samples collected during the roadkill survey in the Napo region of Ecuador from 2020 to 2021. (XLSX)

S2 File. Sequences obtained in this study. Sequences of *COI* and *18S* from *Leishmania* spp. obtained from the amplification of specific targets by PCR. (FASTA)

Acknowledgments

We thank F. Vaca, R. Rodríguez and V. Herrera from Universidad Central del Ecuador and X. Fiallos from Yachay, who helped us in implementing this project.

Author Contributions

Conceptualization: Sandra Enríquez, Sarah Martin-Solano, Sofía Ocaña-Mayorga, Gabriel Alberto Carrillo-Bilbao, Manuela González-Suárez, Ana Poveda.

Formal analysis: Manuel Alejandro Coba-Males, Sarah Martin-Solano, Sofía Ocaña-Mayorga, Jazzmín Arrivillaga-Henríquez, Manuela González-Suárez, Ana Poveda.

Funding acquisition: Sandra Enríquez, Sofía Ocaña-Mayorga, Wilmer Narváez, Manuela González-Suárez, Ana Poveda.

Investigation: Manuel Alejandro Coba-Males, Pablo Medrano-Vizcaíno, David Brito-Zapata, Jaime Antonio Salas.

Methodology: Manuel Alejandro Coba-Males, Pablo Medrano-Vizcaíno, David Brito-Zapata, Sarah Martin-Solano, Sofía Ocaña-Mayorga, Gabriel Alberto Carrillo-Bilbao, Manuela González-Suárez, Ana Poveda.

Project administration: Sandra Enríquez, Wilmer Narváez, Manuela González-Suárez, Ana Poveda.

Supervision: Sandra Enríquez, Sarah Martin-Solano, Sofía Ocaña-Mayorga, Gabriel Alberto Carrillo-Bilbao, Manuela González-Suárez, Ana Poveda.

Writing – original draft: Manuel Alejandro Coba-Males, Pablo Medrano-Vizcaíno, Sandra Enríquez, David Brito-Zapata, Sarah Martin-Solano, Sofía Ocaña-Mayorga, Gabriel Alberto Carrillo-Bilbao, Jaime Antonio Salas, Jazzmín Arrivillaga-Henríquez, Manuela González-Suárez, Ana Poveda.

Writing – review & editing: Manuel Alejandro Coba-Males, Pablo Medrano-Vizcaíno, Sandra Enríquez, David Brito-Zapata, Sarah Martin-Solano, Sofía Ocaña-Mayorga, Gabriel Alberto Carrillo-Bilbao, Jaime Antonio Salas, Jazzmín Arrivillaga-Henríquez, Manuela González-Suárez, Ana Poveda.

References

1. Bischof R, Steyaert SMJG, Kindberg J. Caught in the mesh: roads and their network-scale impediment to animal movement. *Ecography*. 2017; 40: 1369–1380. <https://doi.org/10.1111/ecog.02801>
2. Grilo C, Borda-de-Água L, Beja P, Goolsby E, Soanes K, le Roux A, et al. Conservation threats from roadkill in the global road network. *Global Ecology and Biogeography*. 2021; 30: 2200–2210. <https://doi.org/10.1111/geb.13375>
3. Vaeokhaw S, Ngoprasert D, Swatdipong A, Gale GA, Klinsawat W, Vichitsoonthonkul T. Effects of a highway on the genetic diversity of Asiatic black bears. *Ursus*. 2020; 2020: 1–15. <https://doi.org/10.2192/URSUS-D-18-00013.2>
4. Schwartz ALW, Shilling FM, Perkins SE. The value of monitoring wildlife roadkill. *European Journal of Wildlife Research*. 2020; 66: 1–12. <https://doi.org/10.1007/s10344-019-1357-4>
5. Allio R, Tilak M-K, Scornavacca C, Avenant NL, Kitchener AC, Corre E, et al. High-quality carnivoran genomes from roadkill samples enable comparative species delineation in aardwolf and bat-eared fox. *eLife*. 2021; 10: 1–77. <https://doi.org/10.7554/eLife.63167> PMID: 33599612
6. Motley JL, Stamps BW, Mitchell CA, Thompson AT, Cross J, You J, et al. Opportunistic Sampling of Roadkill as an Entry Point to Accessing Natural Products Assembled by Bacteria Associated with Non-anthropoidal Mammalian Microbiomes. *Journal of Natural Products*. 2017; 80: 598–608. <https://doi.org/10.1021/acs.jnatprod.6b00772> PMID: 28335605
7. Pendl H, Hernández-Lara C, Kubacki J, Borel N, Albini S, Valkiūnas G. Exo-erythrocytic development of *Plasmodium matutum* (lineage pLINN1) in a naturally infected roadkill fieldfare *Turdus pilaris*. *Malaria Journal*. 2022; 21: 1–13. <https://doi.org/10.1186/s12936-022-04166-x> PMID: 35570274
8. Campbell SJ, Ashley W, Gil-Fernandez M, Newsome TM, Di Giallonardo F, Ortiz-Baez AS, et al. Red fox viromes in urban and rural landscapes. *Virus Evolution*. 2020; 6: 1–11. <https://doi.org/10.1093/ve/veaa065> PMID: 33365150
9. Szekeres S, Docters van Leeuwen A, Tóth E, Majoros G, Sprong H, Földvári G. Road-killed mammals provide insight into tick-borne bacterial pathogen communities within urban habitats. *Transboundary and Emerging Diseases*. 2019; 66: 277–286. <https://doi.org/10.1111/tbed.13019> PMID: 30230270
10. Arrivillaga J, Caraballo V. Medicina de la Conservación. *Revista Biomédica*. 2009; 20: 55–67.
11. Destoumieux-Garzón D, Mavingui P, Boetsch G, Boissier J, Darriet F, Duboz P, et al. The One Health Concept: 10 Years Old and a Long Road Ahead. *Frontiers in Veterinary Science*. 2018; 5: 1–13. <https://doi.org/10.3389/fvets.2018.00014> PMID: 29484301
12. Schilling AK, Mazzamuto MV, Romeo C. A Review of Non-Invasive Sampling in Wildlife Disease and Health Research: What's New? *Animals*. 2022; 12: 1–24. <https://doi.org/10.3390/ani12131719> PMID: 35804619

13. Chaves PB, Paes MF, Mendes SL, Strier KB, Louro ID, Fagundes V. Noninvasive genetic sampling of endangered miquiqui (Primates, Atelidae): efficiency of fecal DNA extraction. *Genetics and Molecular Biology*. 2006; 29: 750–754. <https://doi.org/10.1590/S1415-4752006000400028>
14. Carrillo-Bilbao G, Navarro JC, Martin-Solano S, Chávez-Larrea MA, Cholota-Iza C, Saegerman C. First Molecular Identification of Trypanosomes and Absence of Babesia sp. DNA in Faeces of Non-Human Primates in the Ecuadorian Amazon. *Pathogens*. 2022; 11: 1–20. <https://doi.org/10.3390/pathogens11121490> PMID: 36558823
15. Kuhn R, Böllmann J, Krahl K, Bryant IM, Martienssen M. Data on DNA gel sample load, gel electrophoresis, PCR and cost analysis. *Data in Brief*. 2018; 16: 732–751. <https://doi.org/10.1016/j.dib.2017.11.082> PMID: 29270456
16. Kuhn R, Böllmann J, Krahl K, Bryant IM, Martienssen M. Comparison of ten different DNA extraction procedures with respect to their suitability for environmental samples. *Journal of Microbiological Methods*. 2017; 143: 78–86. <https://doi.org/10.1016/j.mimet.2017.10.007> PMID: 29056447
17. Cardoso RM, de Araújo NNSL, Romero GAS, Souza TTCM, Dietrich AG, Mendes JD, et al. Expanding the knowledge about Leishmania species in wild mammals and dogs in the Brazilian savannah. *Parasites & Vectors*. 2015; 8: 1–8. <https://doi.org/10.1186/s13071-015-0780-y> PMID: 25889365
18. Azami-Conesa I, Gómez-Muñoz MT, Martínez-Díaz RA. A Systematic Review (1990–2021) of Wild Animals Infected with Zoonotic Leishmania. *Microorganisms*. 2021; 9: 1101. <https://doi.org/10.3390/microorganisms9051101> PMID: 34065456
19. Cardoso L, Schallig H, Persichetti MF, Pennisi MG. New Epidemiological Aspects of Animal Leishmaniasis in Europe: The Role of Vertebrate Hosts Other Than Dogs. *Pathogens*. 2021; 10: 307. <https://doi.org/10.3390/pathogens10030307> PMID: 33800782
20. Chen H, Li J, Zhang J, Guo X, Liu J, He J, et al. Multi-locus characterization and phylogenetic inference of Leishmania spp. in snakes from Northwest China. Chiang T-Y, editor. *PLOS ONE*. 2019; 14: e0210681. <https://doi.org/10.1371/journal.pone.0210681> PMID: 31022192
21. Mendoza-Roldan JA, Latrofa MS, Tarallo VD, Manoj RRS, Bezerra-Santos MA, Annoscia G, et al. Leishmania spp. in Squamata reptiles from the Mediterranean basin. *Transboundary and Emerging Diseases*. 2022; 69: 2856–2866. <https://doi.org/10.1111/tbed.14438> PMID: 34951929
22. Medrano-Vizcaíno P, Espinosa S. Geography of roadkills within the Tropical Andes Biodiversity Hotspot: Poorly known vertebrates are part of the toll. *Biotropica*. 2021; 53: 820–830. <https://doi.org/10.1111/btp.12938>
23. Medrano-Vizcaíno P, Grilo C, Brito-Zapata D, González-Suárez M (2023) Landscape and road features linked to wildlife mortality in the Amazon. *Biodiversity and Conservation* <https://doi.org/10.1007/s10531-023-02699-4>
24. Tozzo P, Scrivano S, Sanavio M, Caenazzo L. The role of DNA degradation in the estimation of post-mortem interval: A systematic review of the current literature. *International Journal of Molecular Sciences*. 2020; 21: 3540. <https://doi.org/10.3390/ijms21103540> PMID: 32429539
25. Stotesbury T, Cossette ML, Newell-Bell T, Shafer ABA. An Exploratory Time Since Deposition Analysis of Whole Blood Using Metrics of DNA Degradation and Visible Absorbance Spectroscopy. *Pure and Applied Geophysics*. 2021; 178: 735–743. <https://doi.org/10.1007/s00024-020-02494-0>
26. R Core Team. R: A language and environment for statistical computing. R Foundation for Statistical Computing. In: R Foundation for Statistical Computing, Vienna, Austria. [Internet]. 2021 [cited 26 Oct 2022]. Available: <https://www.r-project.org/>
27. Bates D, Mächler M, Bolker B, Walker S. Fitting Linear Mixed-Effects Models using lme4. *Journal of Statistical Software*. 2014; 67. <https://doi.org/10.18637/jss.v067.i01>
28. Lüdtke D, Ben-Shachar M, Patil I, Waggoner P, Makowski D. performance: An R Package for Assessment, Comparison and Testing of Statistical Models. *Journal of Open Source Software*. 2021; 6: 3139. <https://doi.org/10.21105/joss.03139>
29. Lenth R V. emmeans: Estimated Marginal Means, aka Least-Squares Means. R package version 1.8.4–1. Comprehensive R Archive Network (CRAN); 2021.
30. Ivanova N V., Zemlak TS, Hanner RH, Hebert PDN. Universal primer cocktails for fish DNA barcoding. *Molecular Ecology Notes*. 2007; 7: 544–548. <https://doi.org/10.1111/j.1471-8286.2007.01748.x>
31. Egan SL, Ruiz-Aravena M, Austen JM, Barton X, Comte S, Hamilton DG, et al. Blood Parasites in Endangered Wildlife-Trypanosomes Discovered during a Survey of Haemoprotozoa from the Tasmanian Devil. *Pathogens*. 2020; 9: 873. <https://doi.org/10.3390/pathogens9110873> PMID: 33114071
32. Clare EL, Lim BK, Engstrom MD, Eger JL, Hebert PDN. DNA barcoding of Neotropical bats: Species identification and discovery within Guyana: Barcoding. *Molecular Ecology Notes*. 2007; 7: 184–190. <https://doi.org/10.1111/j.1471-8286.2006.01657.x>

33. Modabberi F, Ghadimi SN, Shahriarirad R, Nadimi E, Karbalay-doust S, Rashidi S, et al. Stereological analysis of liver, spleen and bone of *Leishmania infantum*-experimentally infected hamsters. *Experimental Parasitology*. 2021; 228: 108137. <https://doi.org/10.1016/j.exppara.2021.108137> PMID: 34298076
34. Hall TA. BIOEDIT: a user-friendly biological sequence alignment editor and analysis program for Windows 95/98/ NT. *Nucleic Acids Symposium Series*. 1999; 41: 95–98.
35. Tamura K, Stecher G, Kumar S. MEGA11: Molecular Evolutionary Genetics Analysis Version 11. Battistuzzi FU, editor. *Molecular Biology and Evolution*. 2021;38: 3022–3027. <https://doi.org/10.1093/molbev/msab120>
36. Sayers EW, Bolton EE, Brister JR, Canese K, Chan J, Comeau DC, et al. Database resources of the national center for biotechnology information. *Nucleic Acids Research*. 2022; 50: D20–D26. <https://doi.org/10.1093/nar/gkab1112> PMID: 34850941
37. Arrivillaga-Henríquez J, Enríquez S, Romero V, Echeverría G, Pérez-Barrera J, Poveda A, et al. Eco-epidemiological aspects, natural detection and molecular identification of *Leishmania* spp. in *Lutzomyia reburra*, *Lutzomyia barrettoii majuscula* and *Lutzomyia trapidoi*. *Biomédica*. 2017; 37. <https://doi.org/10.7705/biomedica.v37i0.3536> PMID: 29161481
38. Kato H, Gomez EA, Martini-Robles L, Muzzio J, Velez L, Calvopiña M, et al. Geographic Distribution of *Leishmania* Species in Ecuador Based on the Cytochrome B Gene Sequence Analysis. Fujiwara RT, editor. *PLOS Neglected Tropical Diseases*. 2016; 10: 1–10. <https://doi.org/10.1371/journal.pntd.0004844> PMID: 27410039
39. Hashiguchi Y, Velez LN, Villegas N V., Mimori T, Gomez EAL, Kato H. Leishmaniasis in Ecuador: Comprehensive review and current status. *Acta Tropica*. 2017; 166: 299–315. <https://doi.org/10.1016/j.actatropica.2016.11.039> PMID: 27919688
40. Medrano-Vizcaíno P, Brito-Zapata D, Rueda-Vera A, Jarrín V P, García-Carrasco J-M, Medina D, et al. First national assessment of wildlife mortality in Ecuador: An effort from citizens and academia to collect roadkill data at country scale. *Ecology and Evolution*. 2023; 13: e9916. <https://doi.org/10.1002/ece3.9916> PMID: 36993143
41. Medrano-Vizcaíno P, Grilo C, Silva Pinto FA, Carvalho WD, Melinski RD, Schultz ED, et al. Roadkill patterns in Latin American birds and mammals. *Global Ecology and Biogeography*. 2022; 31: 1756–1783. <https://doi.org/10.1111/GEB.13557>
42. Grilo C, Koroleva E, Andrášik R, Bíl M, González-Suárez M. Roadkill risk and population vulnerability in European birds and mammals. *Frontiers in Ecology and the Environment*. 2020; 18: 323–328. <https://doi.org/10.1002/FEE.2216>
43. Sakata MK, Kawata MU, Kurabayashi A, Kurita T, Nakamura M, Shirako T, et al. Development and evaluation of PCR primers for environmental DNA (eDNA) metabarcoding of Amphibia. *Metabarcoding and Metagenomics*. 2022; 6: 15–26. <https://doi.org/10.3897/mbmg.6.76534>
44. Breton BA, Beaty L, Bennett AM, Kyle CJ, Lesbarrères D, Vilaça ST, et al. Testing the effectiveness of environmental DNA (eDNA) to quantify larval amphibian abundance. *Environmental DNA*. 2022; 4: 1229–1240. <https://doi.org/10.1002/edn3.332>
45. Goldberg CS, Strickler KM, Fremier AK. Degradation and dispersion limit environmental DNA detection of rare amphibians in wetlands: Increasing efficacy of sampling designs. *Science of The Total Environment*. 2018; 633: 695–703. <https://doi.org/10.1016/j.scitotenv.2018.02.295> PMID: 29602110
46. Haggerty CJE, Crisman TL, Rohr JR. Effects of forestry-driven changes to groundcover and soil moisture on amphibian desiccation, dispersal, and survival. *Ecological Applications*. 2019; 29: e01870. <https://doi.org/10.1002/eap.1870> PMID: 30737867
47. Hoffmann EP, Cavanaugh KL, Mitchell NJ. Low desiccation and thermal tolerance constrains a terrestrial amphibian to a rare and disappearing microclimate niche. *Conservation Physiology*. 2021; 9. <https://doi.org/10.1093/conphys/coab027> PMID: 33959292
48. Hofstetter JR, Zhang A, Mayeda AR, Guscar T, Nurnberger JI, Lahiri DK. Genomic DNA from Mice: A Comparison of Recovery Methods and Tissue Sources. *Biochemical and Molecular Medicine*. 1997; 62: 197–202. <https://doi.org/10.1006/bmme.1997.2637> PMID: 9441873
49. Repolês BM, Gorospe CM, Tran P, Nilsson AK, Wanrooij PH. The integrity and assay performance of tissue mitochondrial DNA is considerably affected by choice of isolation method. *Mitochondrion*. 2021; 61: 179–187. <https://doi.org/10.1016/j.mito.2021.10.005> PMID: 34728429
50. Wang MJ, Chen F, Lau JTY, Hu YP. Hepatocyte polyploidization and its association with pathophysiological processes. *Cell Death & Disease* 2017 8:5. 2017; 8: e2805–7. <https://doi.org/10.1038/cddis.2017.167> PMID: 28518148
51. Koczur LM, Williford D, DeYoung RW, Ballard BM. Bringing back the dead: Genetic data from avian carcasses. *Wildlife Society Bulletin*. 2017; 41: 796–803. <https://doi.org/10.1002/wsb.823>

52. Flaherty BR, Barratt J, Lane M, Talundzic E, Bradbury RS. Sensitive universal detection of blood parasites by selective pathogen-DNA enrichment and deep amplicon sequencing. *Microbiome*. 2021; 9: 1. <https://doi.org/10.1186/s40168-020-00939-1> PMID: 33388088
53. Sundar S, Singh OP. Molecular Diagnosis of Visceral Leishmaniasis. *Molecular Diagnosis and Therapy*. 2018; 22: 443–457. <https://doi.org/10.1007/s40291-018-0343-y> PMID: 29922885
54. Medrano-Vizcaino P, Grilo C, González-Suárez M. Research and conservation priorities to protect wild-life from collisions with vehicles. *Biological Conservation*. 2023; 280: 109952. <https://doi.org/10.1016/J.BIOCON.2023.109952>